

OIII/THR  
 MEHRABAD INTL

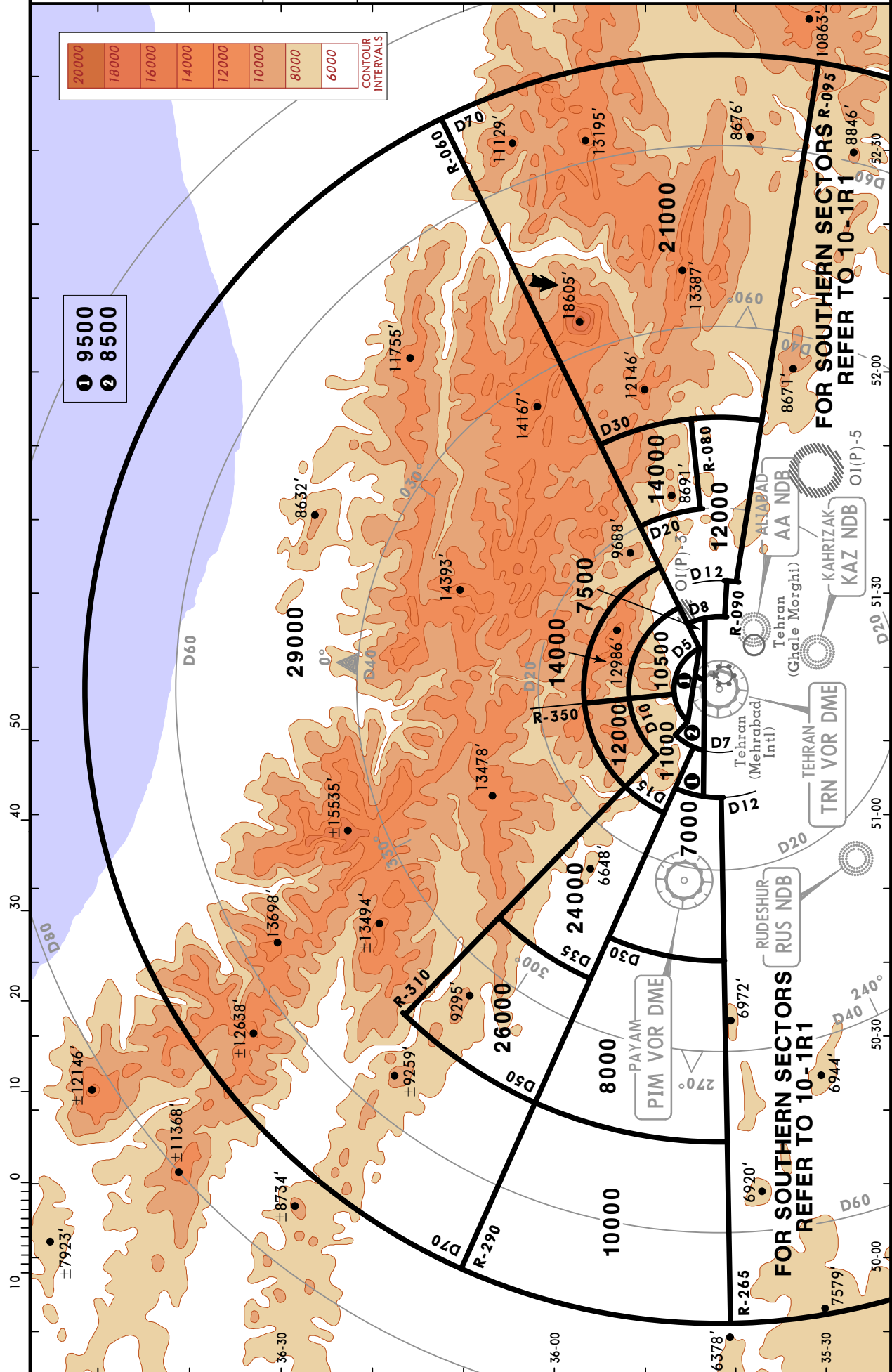


TEHRAN, IRAN

28 SEP 07 (10-1R)

**RADAR MINIMUM ALTITUDES**

MEHRABAD Radar (APP)			Apt Elev	Alt Set: hPa	Trans level: By ATC	Trans alt: 9000'
119.7	124.45	125.1	3962'			



# OIII/THR MEHRABAD INTL

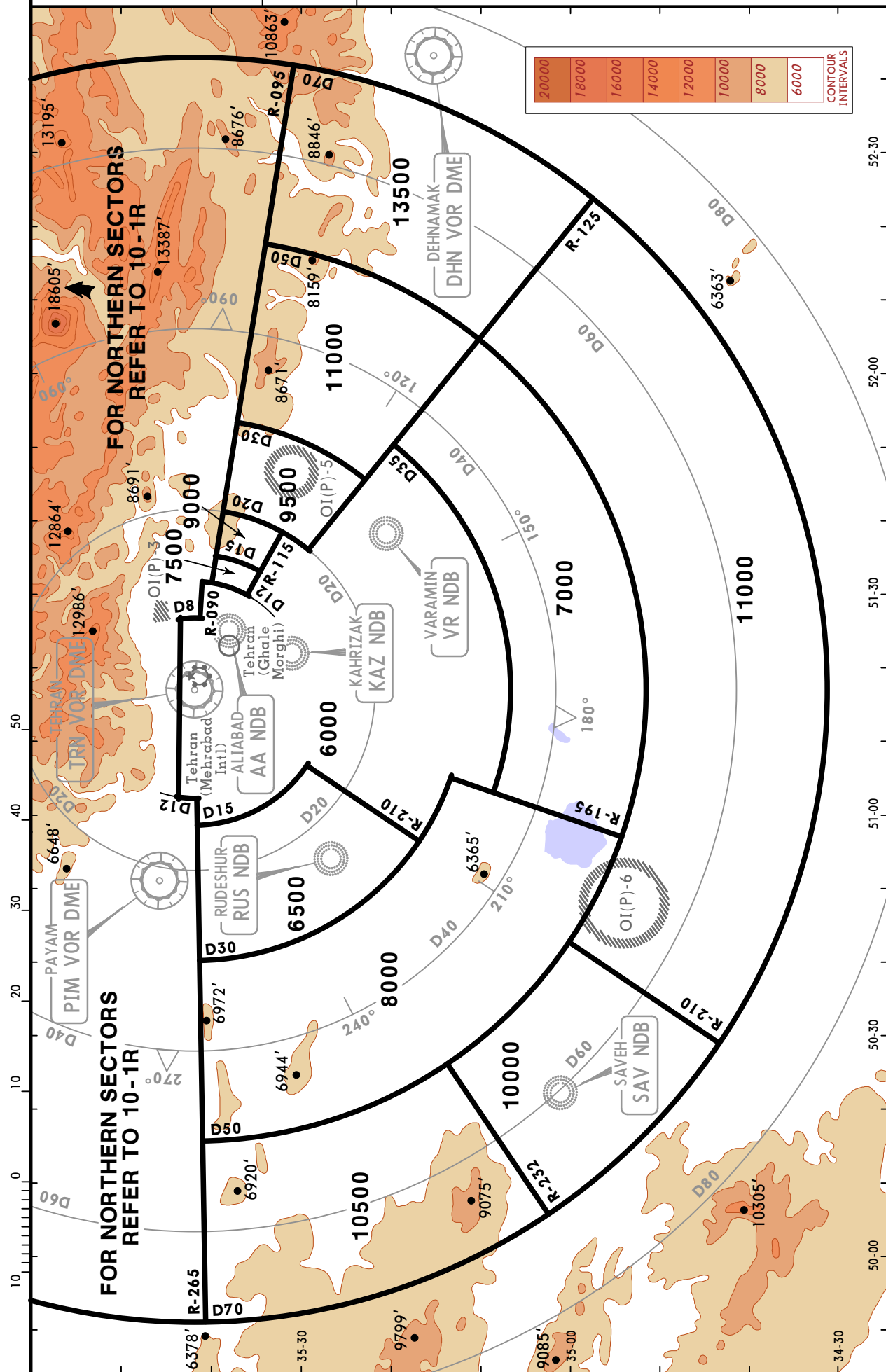


# TEHRAN, IRAN

28 SEP 07 **10-1R1**

**RADAR MINIMUM ALTITUDES**

MEHRABAD Radar (APP)	Apt Elev	Alt Set: hPa	Trans level: By ATC	Trans alt: 9000'
119.7 124.45 125.1	3962'			



OIII/THR  
 MEHRABAD INTL

JEPPESEN

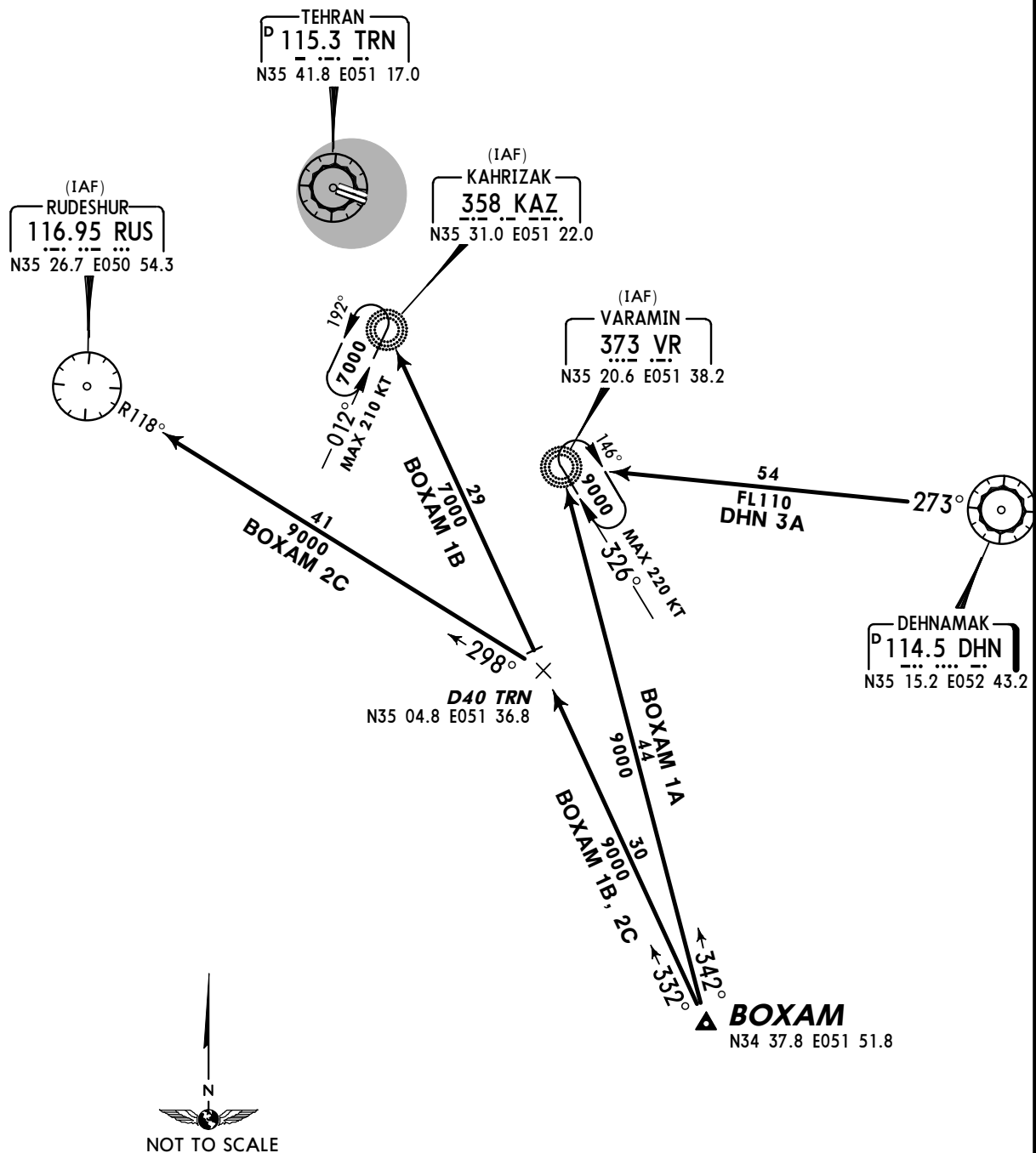
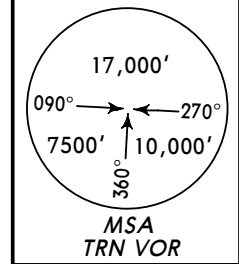
TEHRAN, IRAN

23 MAY 08 10-2 Eff 5 Jun

STAR

ATIS 128.0	Apt Elev 3962'	Alt Set: hPa Trans level: By ATC Trans alt: 9000' Actual descent clearance will be as directed by ATC.
---------------	-------------------	---

**BOXAM 1A [BOXA1A]**  
**BOXAM 1B [BOXA1B], BOXAM 2C [BOXA2C]**  
**DEHNAMAK 3A (DHN 3A)**  
**RWYS 11L/R, 29L/R ARRIVALS**  
**~~SPEEDS~~ MAX 280 KT AT OR BELOW FL200**  
**MAX 220 KT WITHIN TRN 25 DME**  
**WHEN AT OR BELOW FL140**



OIII/THR  
 MEHRABAD INTL



TEHRAN, IRAN

23 MAY 08 (10-2A) Eff 5 Jun

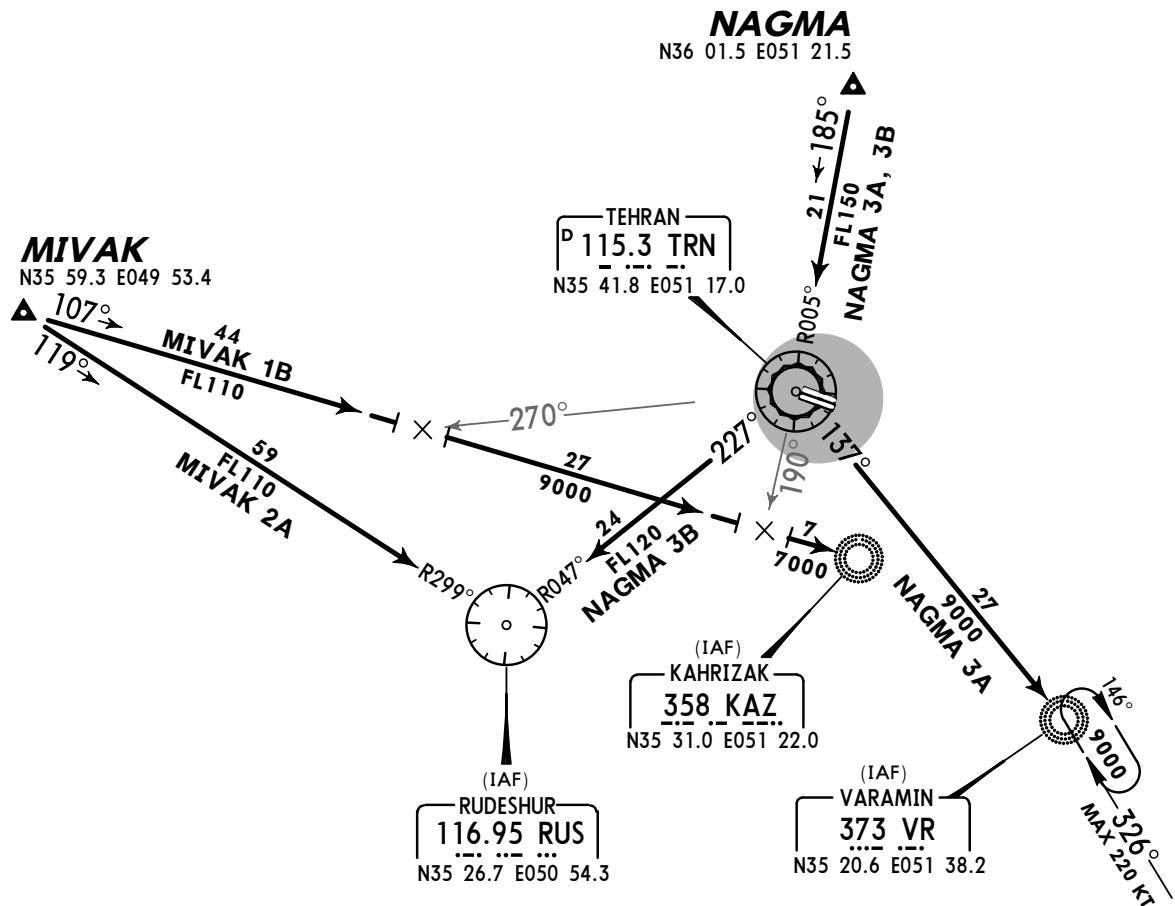
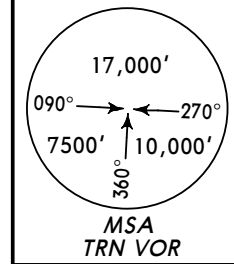
STAR

ATIS  
 128.0

Apt Elev  
 3962'

Alt Set: hPa Trans level: By ATC Trans alt: 9000'  
 Actual descent clearance will be as directed by ATC.

MIVAK 2A [MIVA2A], MIVAK 1B [MIVA1B]  
 NAGMA 3A [NAGM3A], NAGMA 3B [NAGM3B]  
 RWYS 11L/R, 29L/R ARRIVALS  
**SPEEDS** MAX 280 KT AT OR BELOW FL200  
 MAX 220 KT WITHIN TRN 25 DME  
 WHEN AT OR BELOW FL140



OIII/THR  
 MEHRABAD INTL

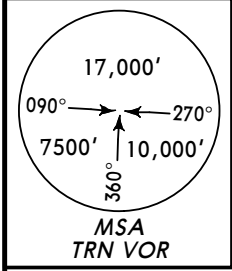
JEPPESEN

TEHRAN, IRAN

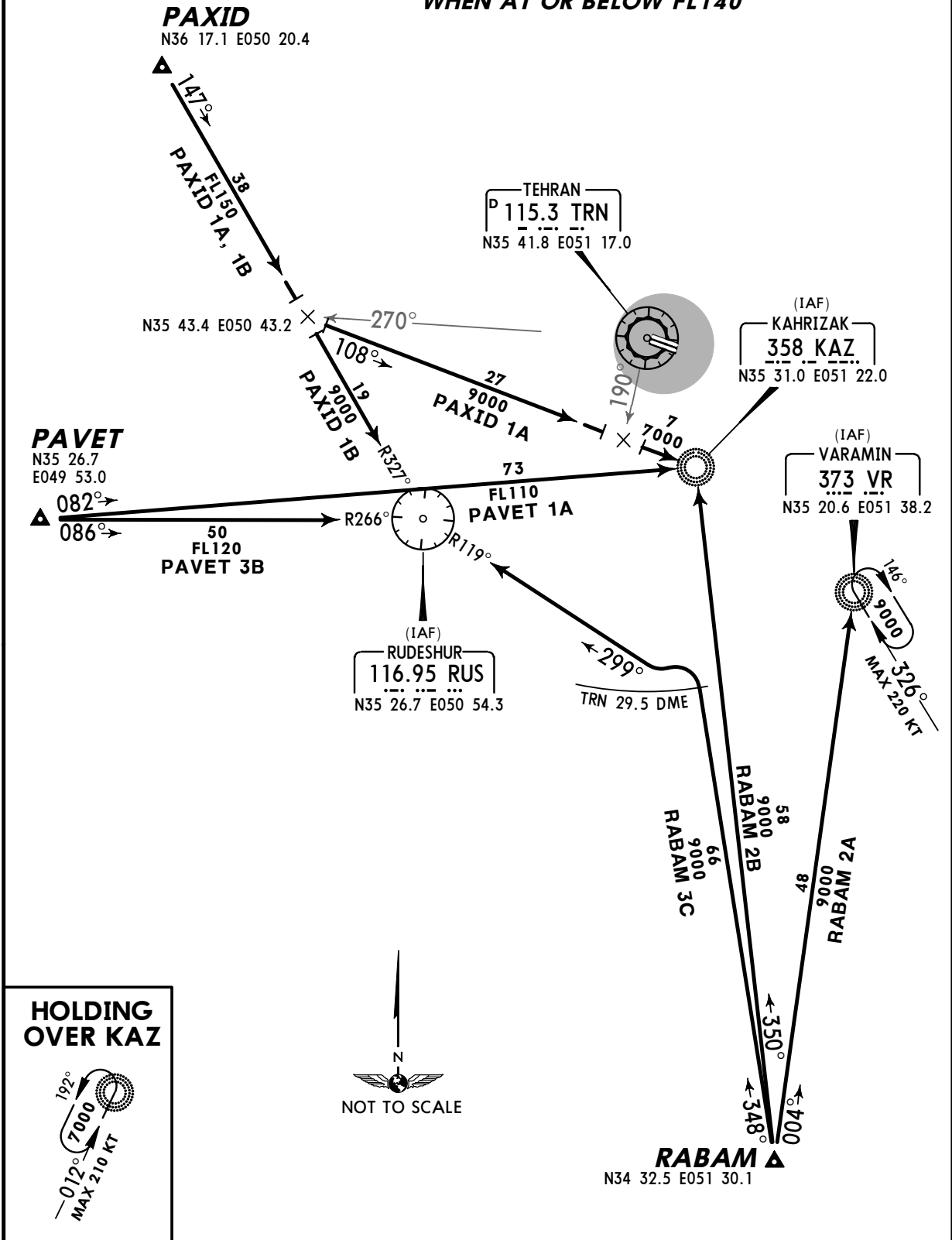
23 MAY 08 (10-2B) Eff 5 Jun

STAR

ATIS 128.0	Apt Elev 3962'	Alt Set: hPa Trans level: By ATC Trans alt: 9000' Actual descent clearance will be as directed by ATC.
---------------	-------------------	---



PAVET 1A [PAVE1A], PAVET 3B [PAVE3B]  
 PAXID 1A [PAXI1A], PAXID 1B [PAXI1B]  
 RABAM 2A [RABA2A], RABAM 2B [RABA2B]  
 RABAM 3C [RABA3C]  
 RWYS 11L/R, 29L/R ARRIVALS  
**SPEEDS MAX 280 KT AT OR BELOW FL200**  
**MAX 220 KT WITHIN TRN 25 DME**  
**WHEN AT OR BELOW FL140**



OIII/THR  
 MEHRABAD INTL

JEPPESEN

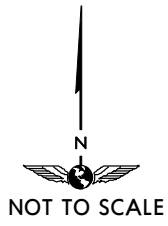
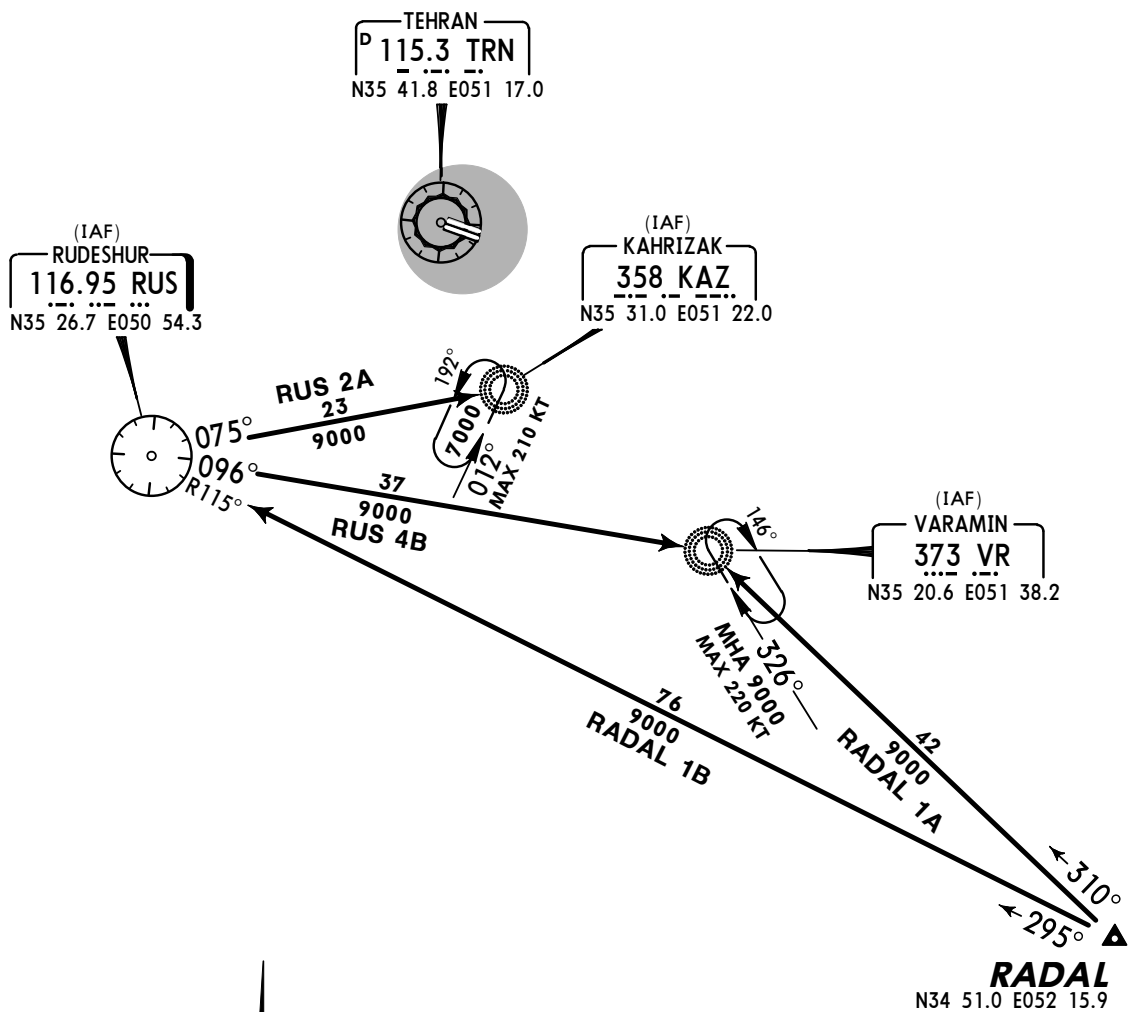
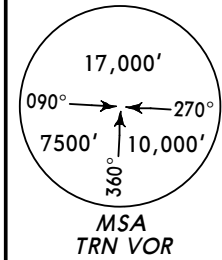
TEHRAN, IRAN

23 MAY 08 (10-2C) Eff 5 Jun

STAR

ATIS 128.0	Apt Elev 3962'	Alt Set: hPa Trans level: By ATC Trans alt: 9000' Actual descent clearance will be as directed by ATC.
---------------	-------------------	---

**RADAL 1A [RADA1A], RADAL 1B [RADA1B]**  
**RUDESHUR 2A (RUS 2A), RUDESHUR 4B (RUS 4B)**  
**RWYS 11L/R, 29L/R ARRIVALS**  
**~~SPEEDS~~ MAX 280 KT AT OR BELOW FL200**  
**MAX 220 KT WITHIN TRN 25 DME**  
**WHEN AT OR BELOW FL140**



OIII/THR  
MEHRABAD INTL

JEPPESEN

TEHRAN, IRAN

23 MAY 08 (10-2D) Eff 5 Jun

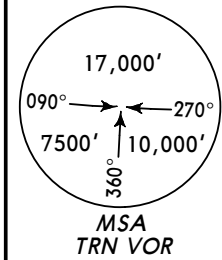
STAR

ATIS  
128.0

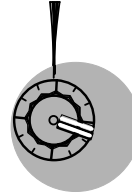
Apt Elev  
3962'

Alt Set: hPa Trans level: By ATC Trans alt: 9000'  
Actual descent clearance will be as directed by ATC.

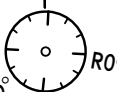
SAVEH 2A (SAV 2A), SAVEH 1B (SAV 1B)  
VARAMIN 2A (VR 2A), VARAMIN 3B (VR 3B)  
RWYS 11L/R, 29L/R ARRIVALS  
~~SPEEDS~~ MAX 280 KT AT OR BELOW FL200  
MAX 220 KT WITHIN TRN 25 DME  
WHEN AT OR BELOW FL140



TEHRAN  
P 115.3 TRN  
N35 41.8 E051 17.0

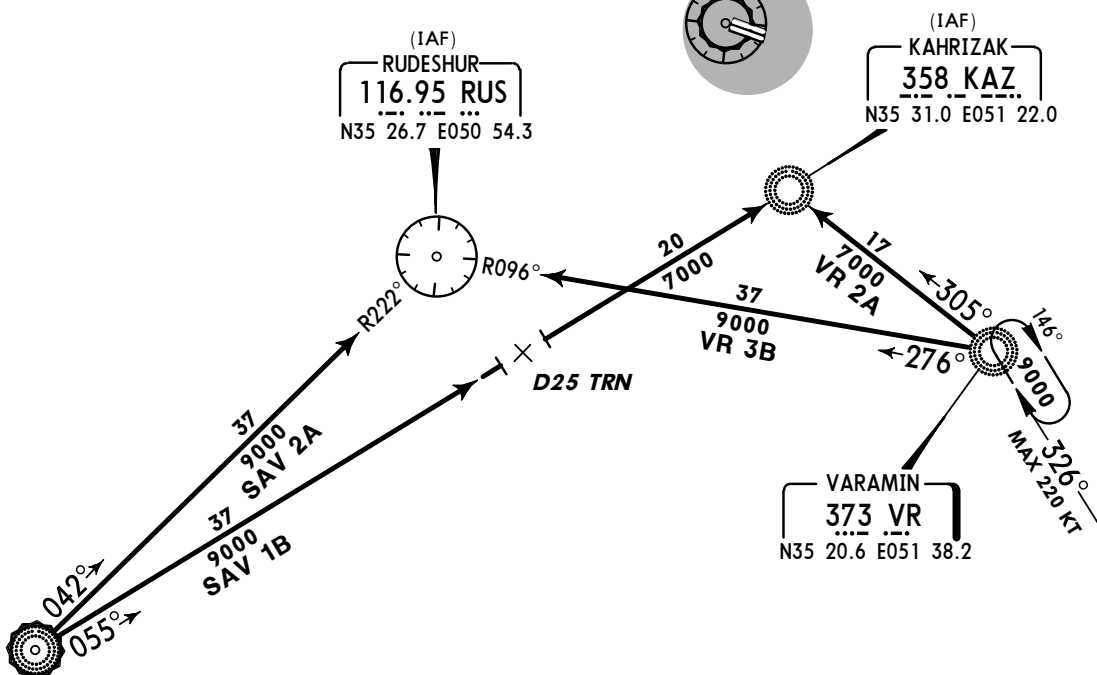


(IAF)  
RUDESHUR  
116.95 RUS  
N35 26.7 E050 54.3



(IAF)  
KAHRIZAK  
358 KAZ  
N35 31.0 E051 22.0

VARAMIN  
373 VR  
N35 20.6 E051 38.2



DME  
SAVEH  
P (115.2) SAV  
\* ... ..  
N35 01.1 E050 22.3  
\*408 SAV  
\* ... ..  
N35 01.1 E050 22.3



OIII/THR  
 MEHRABAD INTL

JEPPESEN

TEHRAN, IRAN

23 MAY 08

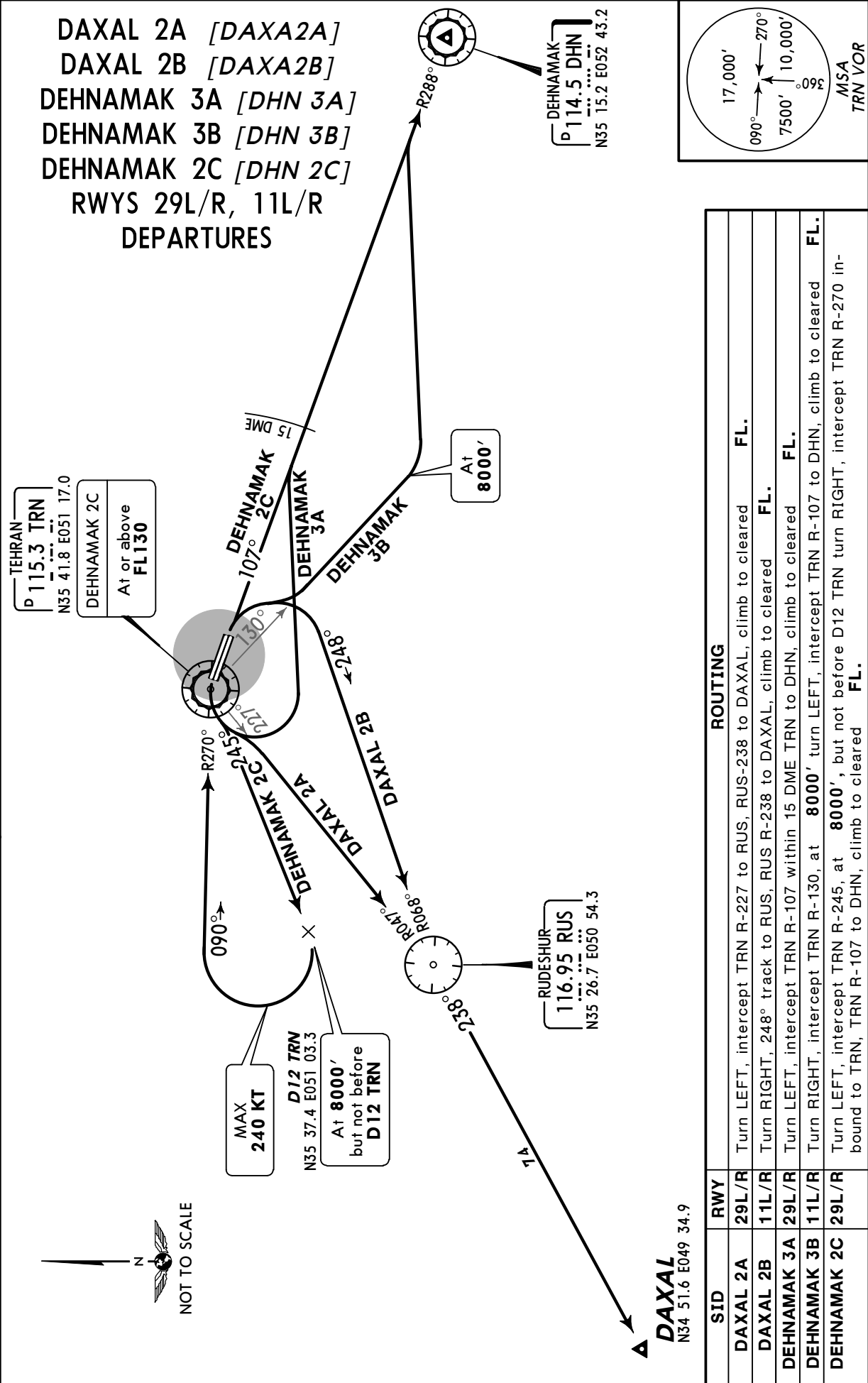
10-3

Eff 5 Jun

SID

Apt Elev  
 3962' Trans level: By ATC Trans alt: 9000'

DAXAL 2A [DAXA2A]  
 DAXAL 2B [DAXA2B]  
 DEHNAMAK 3A [DHN 3A]  
 DEHNAMAK 3B [DHN 3B]  
 DEHNAMAK 2C [DHN 2C]  
 RWYS 29L/R, 11L/R  
 DEPARTURES



SID	RWY	ROUTING
DAXAL 2A	29L/R	Turn LEFT, intercept TRN R-227 to RUS, RUS-238 to DAXAL, climb to cleared FL.
DAXAL 2B	11L/R	Turn RIGHT, 248° track to RUS, RUS R-238 to DAXAL, climb to cleared FL.
DEHNAMAK 3A	29L/R	Turn LEFT, intercept TRN R-107 within 15 DME TRN to DHN, climb to cleared FL.
DEHNAMAK 3B	11L/R	Turn RIGHT, intercept TRN R-130, at 8000' turn LEFT, intercept TRN R-107 to DHN, climb to cleared FL.
DEHNAMAK 2C	29L/R	Turn LEFT, intercept TRN R-245, at 8000', but not before D12 TRN turn RIGHT, intercept TRN R-270 inbound to TRN, TRN R-107 to DHN, climb to cleared FL.

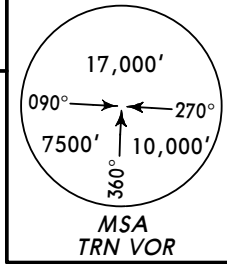


OIII/THR  
 MEHRABAD INTL

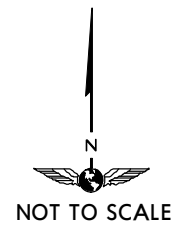
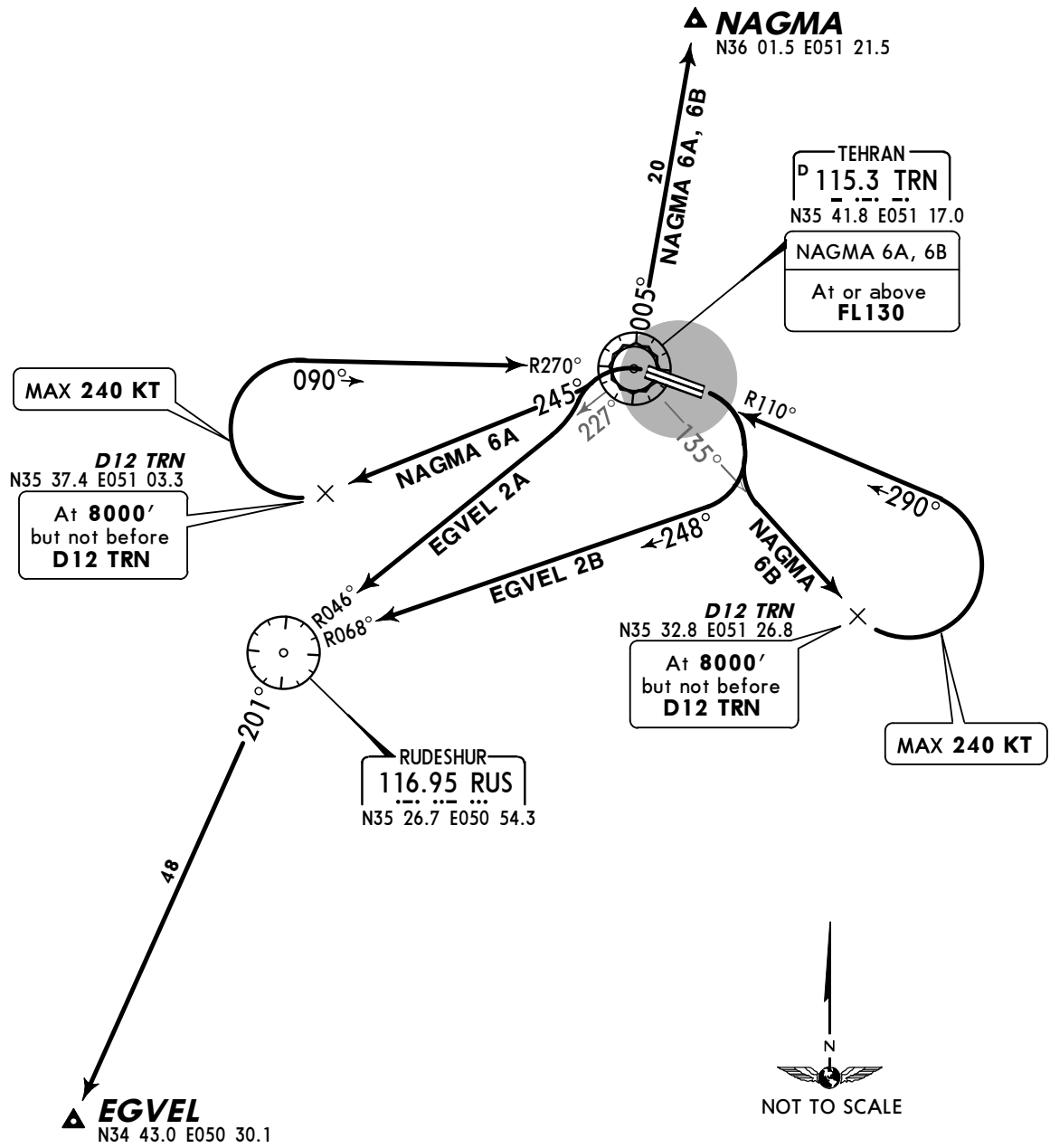
JEPPESEN  
 23 MAY 08 (10-3A) Eff 5 Jun

TEHRAN, IRAN  
 SID

Apt Elev 3962' Trans level: By ATC Trans alt: 9000'



EGVEL 2A [EGVE2A]  
 EGVEL 2B [EGVE2B]  
 NAGMA 6A [NAGM6A]  
 NAGMA 6B [NAGM6B]  
 RWYS 29L/R, 11L/R DEPARTURES



SID	RWY	ROUTING
EGVEL 2A	29L/R	Turn LEFT, intercept TRN R-227 to RUS, turn LEFT, RUS-201 to EGVEL, climb to cleared FL.
EGVEL 2B	11L/R	Turn RIGHT, 248° track to RUS, turn LEFT, RUS R-201 to EGVEL, climb to cleared FL.
NAGMA 6A	29L/R	Turn LEFT, intercept TRN R-245, at 8000', but not before D12 TRN turn RIGHT, intercept TRN R-270 inbound to TRN, turn LEFT, TRN R-005 to NAGMA, climb to cleared FL.
NAGMA 6B	11L/R	Turn RIGHT, intercept TRN R-135, at 8000', but not before D12 TRN turn LEFT, intercept TRN R-110 inbound to TRN, turn RIGHT, TRN R-005 to NAGMA, climb to cleared FL.

CHANGES: RUS NDB replaced by VOR; SIDs renumbered & revised.

OIII/THR  
 MEHRABAD INTL

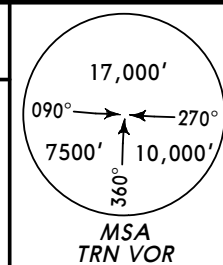


TEHRAN, IRAN

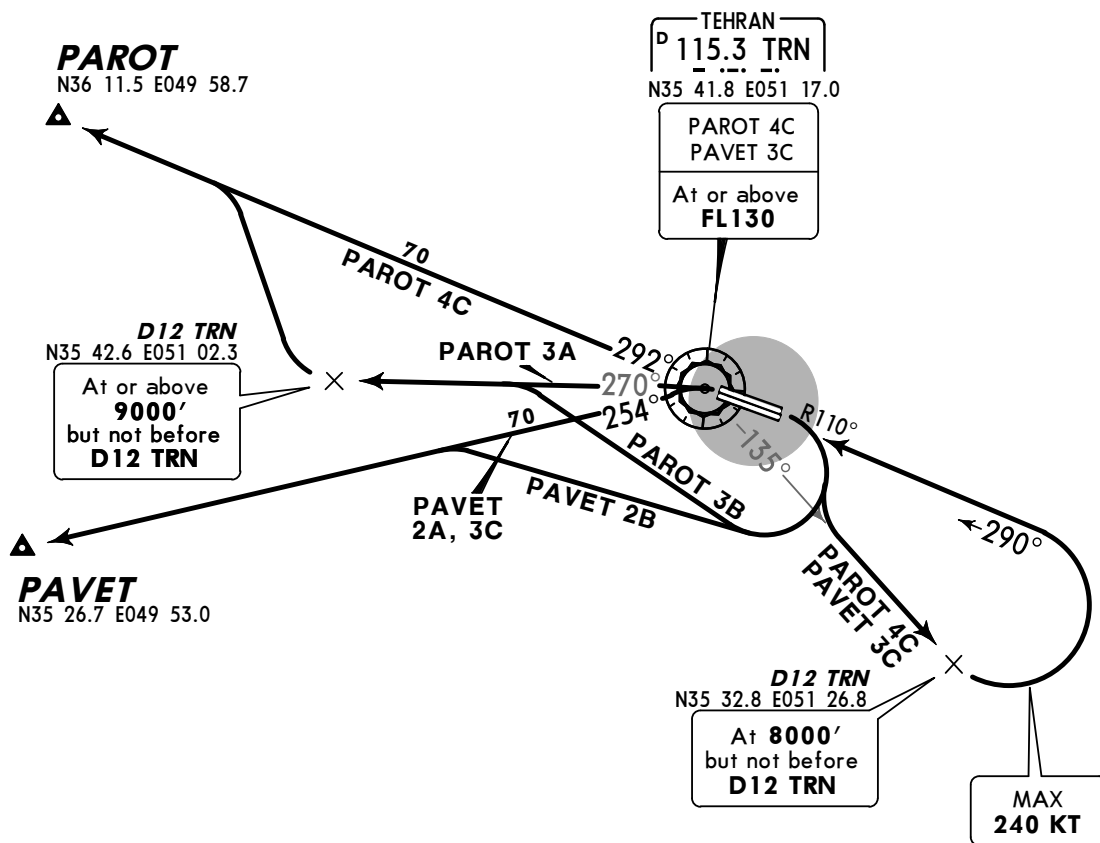
23 MAY 08 (10-3B) Eff 5 Jun

SID

Apt Elev 3962' Trans level: By ATC Trans alt: 9000'



PAROT 3A [PARO3A], PAROT 3B [PARO3B]  
 PAROT 4C [PARO4C], PAVET 2A [PAVE2A]  
 PAVET 2B [PAVE2B], PAVET 3C [PAVE3C]  
 RWYS 29L/R, 11L/R DEPARTURES



SID	RWY	ROUTING
PAROT 3A	29L/R	Turn LEFT, intercept TRN R-270, at or above 9000', but not before D12 TRN turn RIGHT, intercept TRN R-292 to PAROT, climb to cleared FL.
PAROT 3B	11L/R	Turn RIGHT, intercept TRN R-270, at or above 9000', but not before D12 TRN turn RIGHT, intercept TRN R-292 to PAROT, climb to cleared FL.
PAROT 4C		Turn RIGHT, intercept TRN R-135, at 8000', but not before D12 TRN turn LEFT, intercept TRN R-110 inbound to TRN, TRN R-292 to PAROT, climb to cleared FL.
PAVET 2A	29L/R	Turn LEFT, intercept TRN R-254 to PAVET, climb to cleared FL.
PAVET 2B	11L/R	Turn RIGHT, intercept TRN R-254 to PAVET, climb to cleared FL.
PAVET 3C		Turn RIGHT, intercept TRN R-135, at 8000', but not before D12 TRN turn LEFT, intercept TRN R-110 inbound to TRN, TRN R-254 to PAVET, climb to cleared FL.

OIII/THR  
 MEHRABAD INTL

JEPPESEN

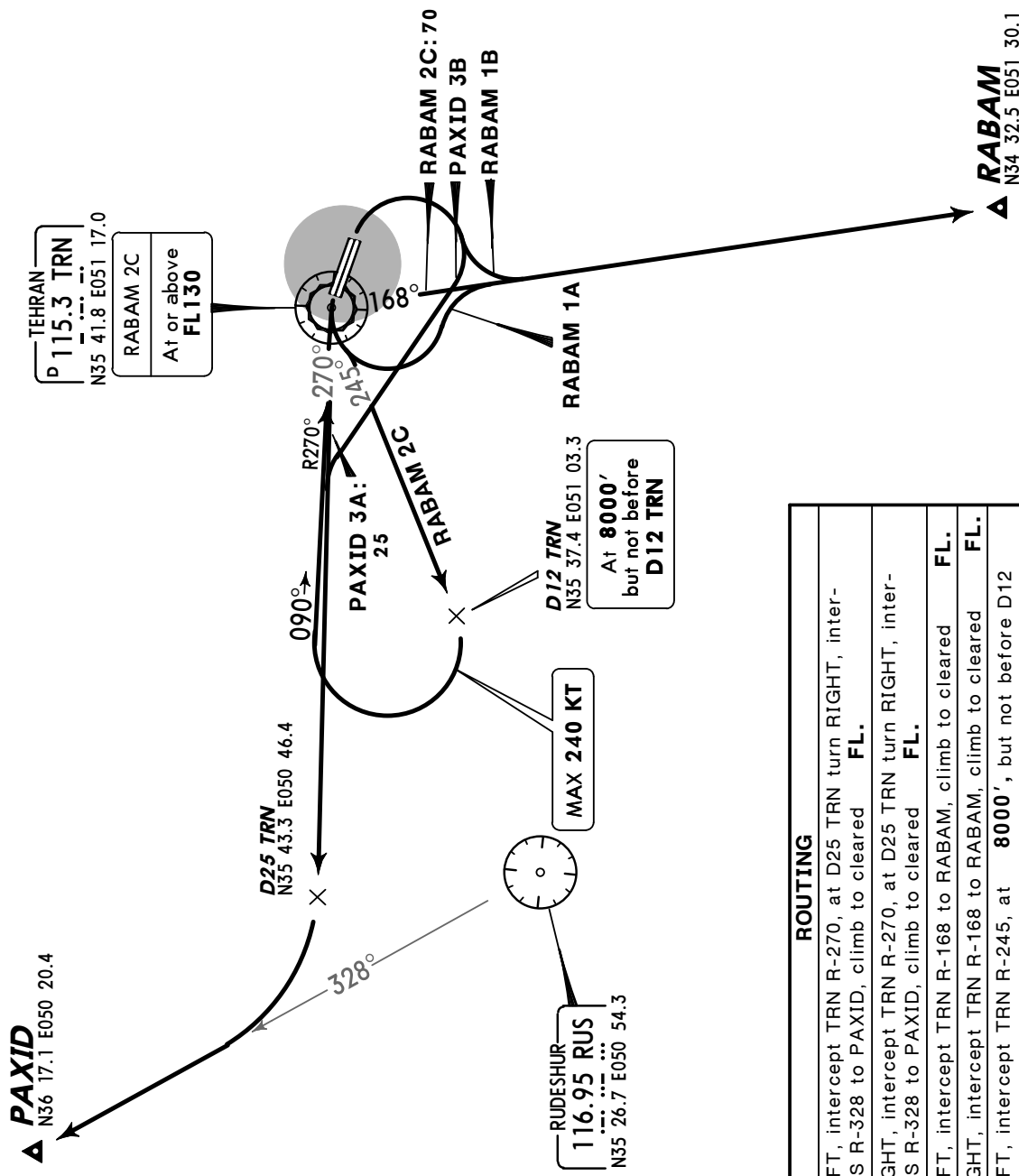
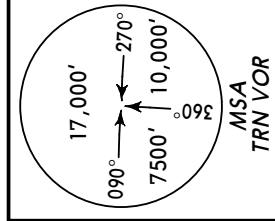
TEHRAN, IRAN

23 MAY 08 10-3C Eff 5 Jun

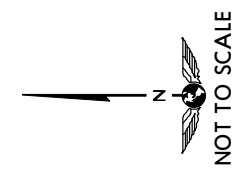
SID

Apt Elev 3962' Trans level: By ATC Trans alt: 9000'

PAXID 3A [PAXI3A], PAXID 3B [PAXI3B]  
 RABAM 1A [RABA1A], RABAM 1B [RABA1B]  
 RABAM 2C [RABA2C]  
 RWYS 29L/R, 11L/R DEPARTURES



SID	RWY	ROUTING
PAXID 3A	29L/R	Turn LEFT, intercept TRN R-270, at D25 TRN turn RIGHT, intercept RUS R-328 to PAXID, climb to cleared <b>FL</b> .
PAXID 3B	11L/R	Turn RIGHT, intercept TRN R-270, at D25 TRN turn RIGHT, intercept RUS R-328 to PAXID, climb to cleared <b>FL</b> .
RABAM 1A	29L/R	Turn LEFT, intercept TRN R-168 to RABAM, climb to cleared <b>FL</b> .
RABAM 1B	11L/R	Turn RIGHT, intercept TRN R-168 to RABAM, climb to cleared <b>FL</b> .
RABAM 2C	29L/R	Turn LEFT, intercept TRN R-245, at 8000', but not before D12 TRN turn RIGHT, intercept TRN R-270 inbound to TRN, TRN R-168 to RABAM, climb to cleared <b>FL</b> .



OIII/THR  
 MEHRABAD INTL

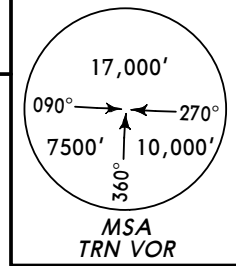
JEPPESEN

TEHRAN, IRAN

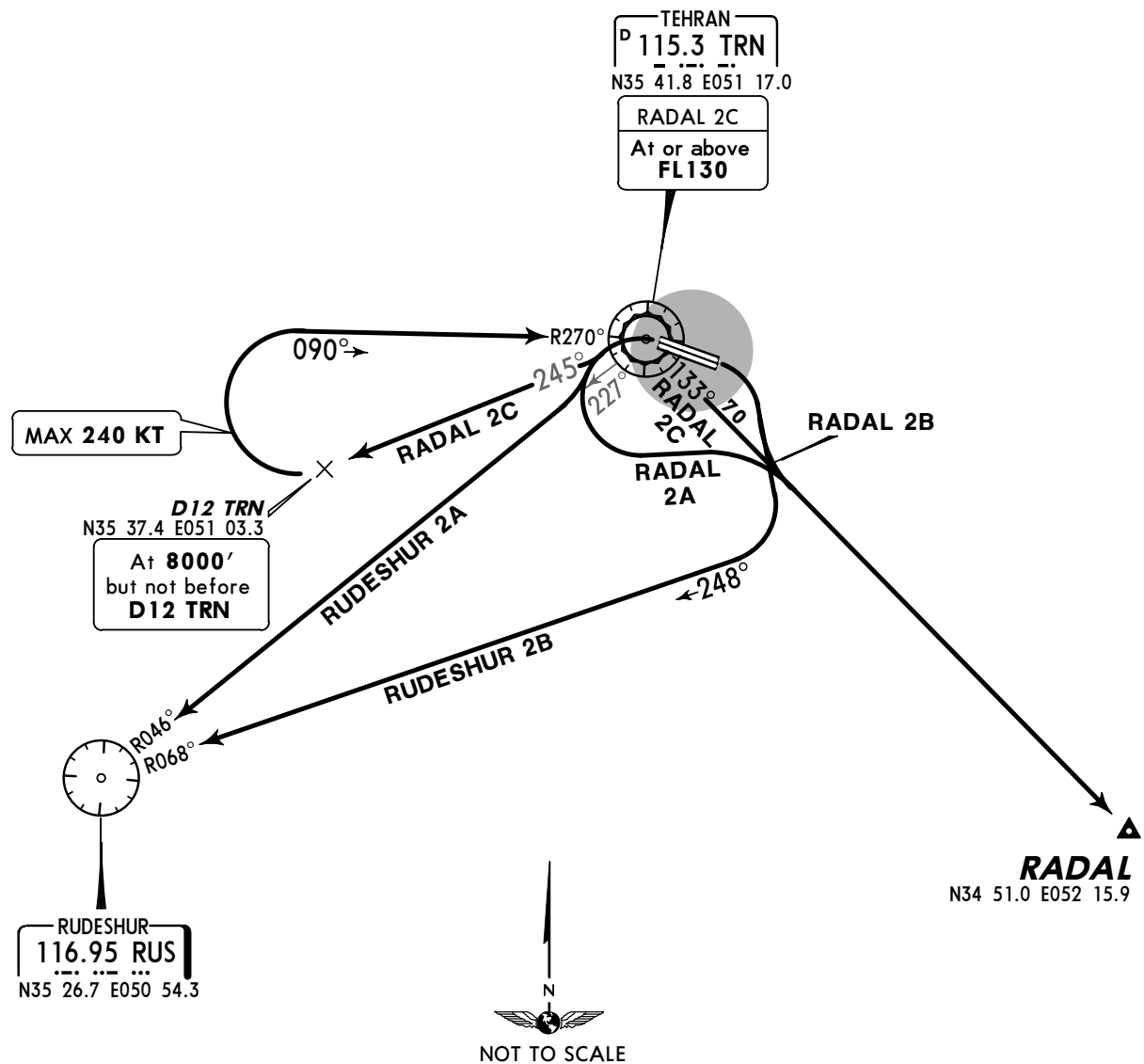
23 MAY 08 (10-3D) Eff 5 Jun

SID

Apt Elev 3962' Trans level: By ATC Trans alt: 9000'



**RADAL 2A [RADA2A]**  
**RADAL 2B [RADA2B], RADAL 2C [RADA2C]**  
**RUDESHUR 2A [RUS 2A], RUDESHUR 2B [RUS 2B]**  
**RWYS 29L/R, 11L/R DEPARTURES**



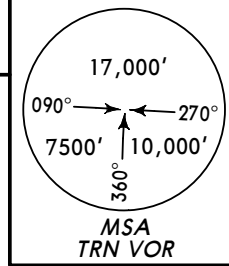
SID	RWY	ROUTING
RADAL 2A	29L/R	Turn LEFT, intercept TRN R-133 to RADAL, climb to cleared <b>FL.</b>
RADAL 2B	11L/R	Turn RIGHT, intercept TRN R-133 to RADAL, climb to cleared <b>FL.</b>
RADAL 2C	29L/R	Turn LEFT, intercept TRN R-245, at <b>8000'</b> , but not before D12 TRN turn RIGHT, intercept TRN R-270 inbound to TRN, TRN R-133 to RADAL climb to cleared <b>FL.</b>
RUDESHUR 2A		Turn LEFT, intercept TRN R-227 to RUS, climb to cleared <b>FL.</b>
RUDESHUR 2B	11L/R	Turn RIGHT, intercept RUS R-068 inbound to RUS, climb to cleared <b>FL.</b>

OIII/THR  
 MEHRABAD INTL

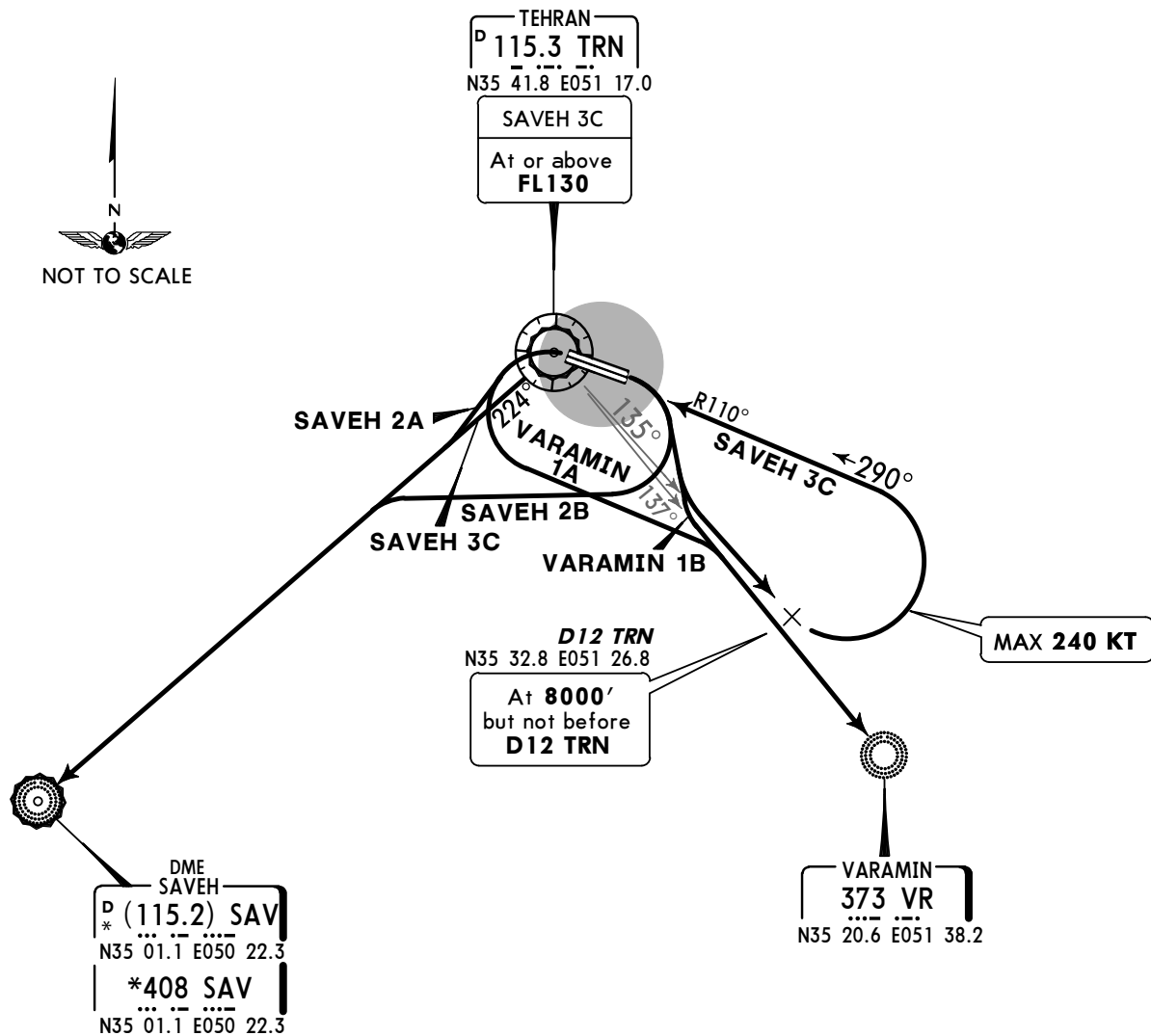
JEPPESEN  
 23 MAY 08 **10-3E** Eff 5 Jun

TEHRAN, IRAN  
**SID**

Apt Elev  
**3962'** Trans level: By ATC Trans alt: 9000'



**SAVEH 2A [SAV 2A]**  
**SAVEH 2B [SAV 2B], SAVEH 3C [SAV 3C]**  
**VARAMIN 1A [VR 1A], VARAMIN 1B [VR 1B]**  
**RWYS 29L/R, 11L/R DEPARTURES**



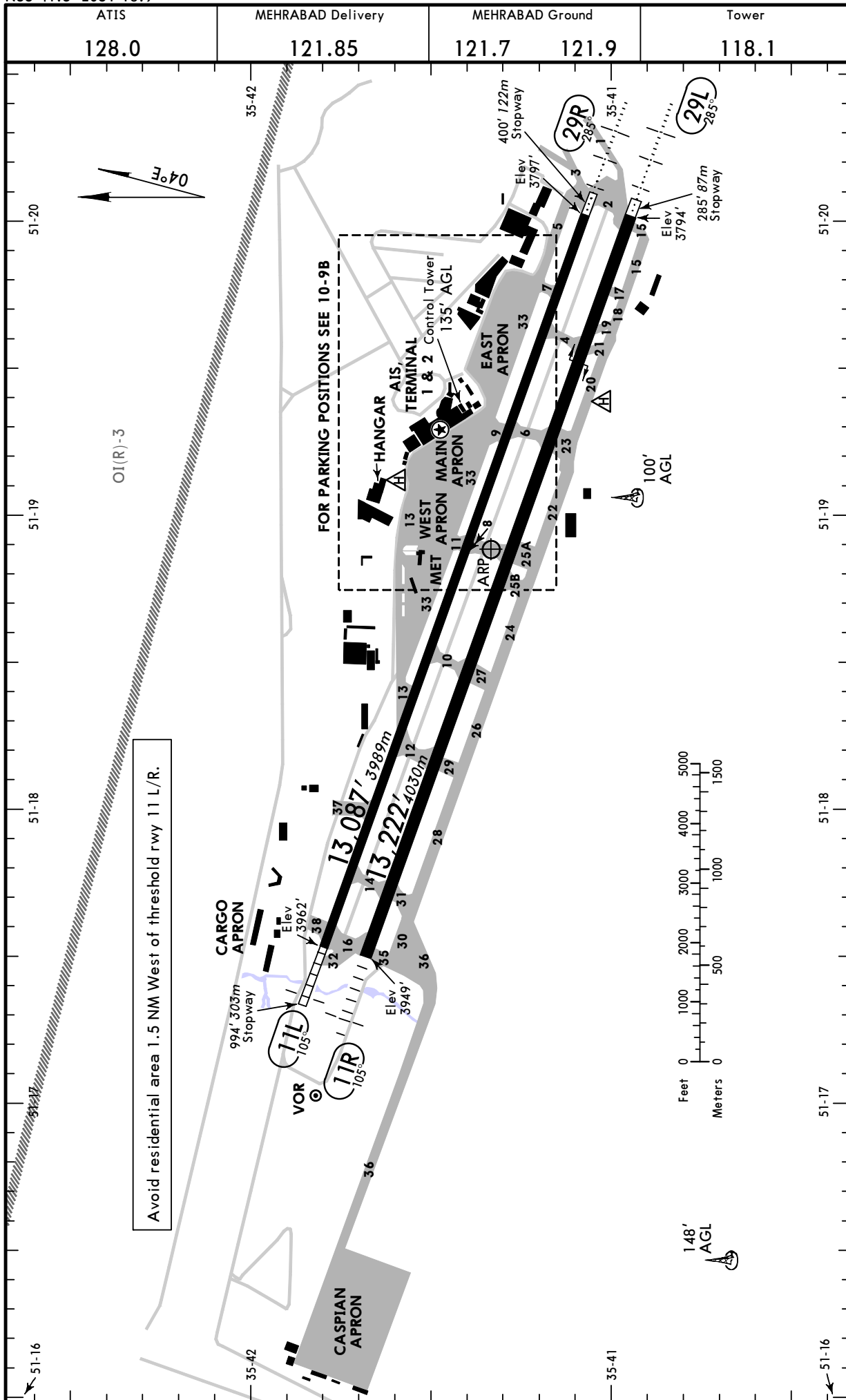
SID	RWY	ROUTING
SAVEH 2A	29L/R	Turn LEFT, intercept TRN R-224 to SAV, climb to cleared <b>FL.</b>
SAVEH 2B	11L/R	Turn RIGHT, intercept TRN R-224 to SAV, climb to cleared <b>FL.</b>
SAVEH 3C		Turn RIGHT, intercept TRN R-135, at <b>8000'</b> , but not before D12 TRN turn LEFT, intercept TRN R-110 inbound to TRN, TRN R-224 to SAV, climb to cleared <b>FL.</b>
VARAMIN 1A	29L/R	Turn LEFT, intercept TRN R-137 to VR, climb to cleared <b>FL.</b>
VARAMIN 1B	11L/R	Turn RIGHT, intercept TRN R-137 to VR, climb to cleared <b>FL.</b>

**OIII/THR**  
Apt Elev **3962'**  
N35 41.3 E051 18.9

**JEPPESEN**

16 MAR 07 **(10-9)**

**TEHRAN, IRAN**  
**MEHRABAD INTL**



OIII/THR

JEPPESEN  
16 MAR 07 (10-9A)

TEHRAN, IRAN  
MEHRABAD INTL

INS COORDINATES			
STAND No.	COORDINATES	STAND No.	COORDINATES
1, 2	N35 41.5 E051 19.0	23	N35 41.3 E051 19.7
3	N35 41.5 E051 19.1	24	N35 41.3 E051 19.6
4, 5	N35 41.5 E051 19.0	25	N35 41.3 E051 19.7
6, 7	N35 41.5 E051 19.1	26	N35 41.3 E051 19.6
8, 9	N35 41.5 E051 19.2	27	N35 41.3 E051 19.8
13	N35 41.4 E051 19.3	28	N35 41.3 E051 19.7
14	N35 41.3 E051 19.4	29	N35 41.3 E051 19.8
15	N35 41.4 E051 19.5	30, 32	N35 41.2 E051 19.7
16	N35 41.3 E051 19.5	J1	N35 41.5 E051 19.2
17	N35 41.4 E051 19.6	J2, J3	N35 41.4 E051 19.3
18	N35 41.3 E051 19.5		
19	N35 41.3 E051 19.6		
20	N35 41.3 E051 19.5		
21	N35 41.3 E051 19.7		
22	N35 41.3 E051 19.6		

**GENERAL**

Birds and stray dogs in vicinity of airport.  
RWY 11L/R right-hand circuit.

**ADDITIONAL RUNWAY INFORMATION**

RWY		USABLE LENGTHS		TAKE-OFF	WIDTH
		Threshold	Landing Beyond Glide Slope		
11L	HIRL(60m) ALS PAPI-L (angle 3.22°)			①	148' 45m
29R	HIRL(60m) HIALS PAPI-L (angle 3.22°)				

① MIL jet barrier 100' West of RWY 11L height 12' AGL is in up psn and can be lowered on request.

11R	HIRL(60m) ALS PAPI-L (angle 3.36°)	②		②	197' 60m
29L	HIRL(60m) HIALS SFL PAPI-L (angle 3.30°)		12,397' 3779m		

② Single engine aircraft should use portion of runway West of arrester gear which is installed 2598'/792m inwards from threshold 29L.

**TAKE-OFF & DEPARTURE PROCEDURE**

AIR CARRIER (JAA)	
All Rwys	
	NIL (DAY only)
RL & RCLM	
A	
B	
C	
D	
	400m
	500m

Departure rwy 11 L/R: Rwy 11 not used for T/O during 1730 - 0430 except tail wind component of rwy 29 is 10 KT or more.

Departure rwy 29 L/R: To avoid residential area 1.5 NM West of rwy 11 all JET acft are to make a LEFT turn as soon as practicable after passing end of rwy and follow assigned SID.

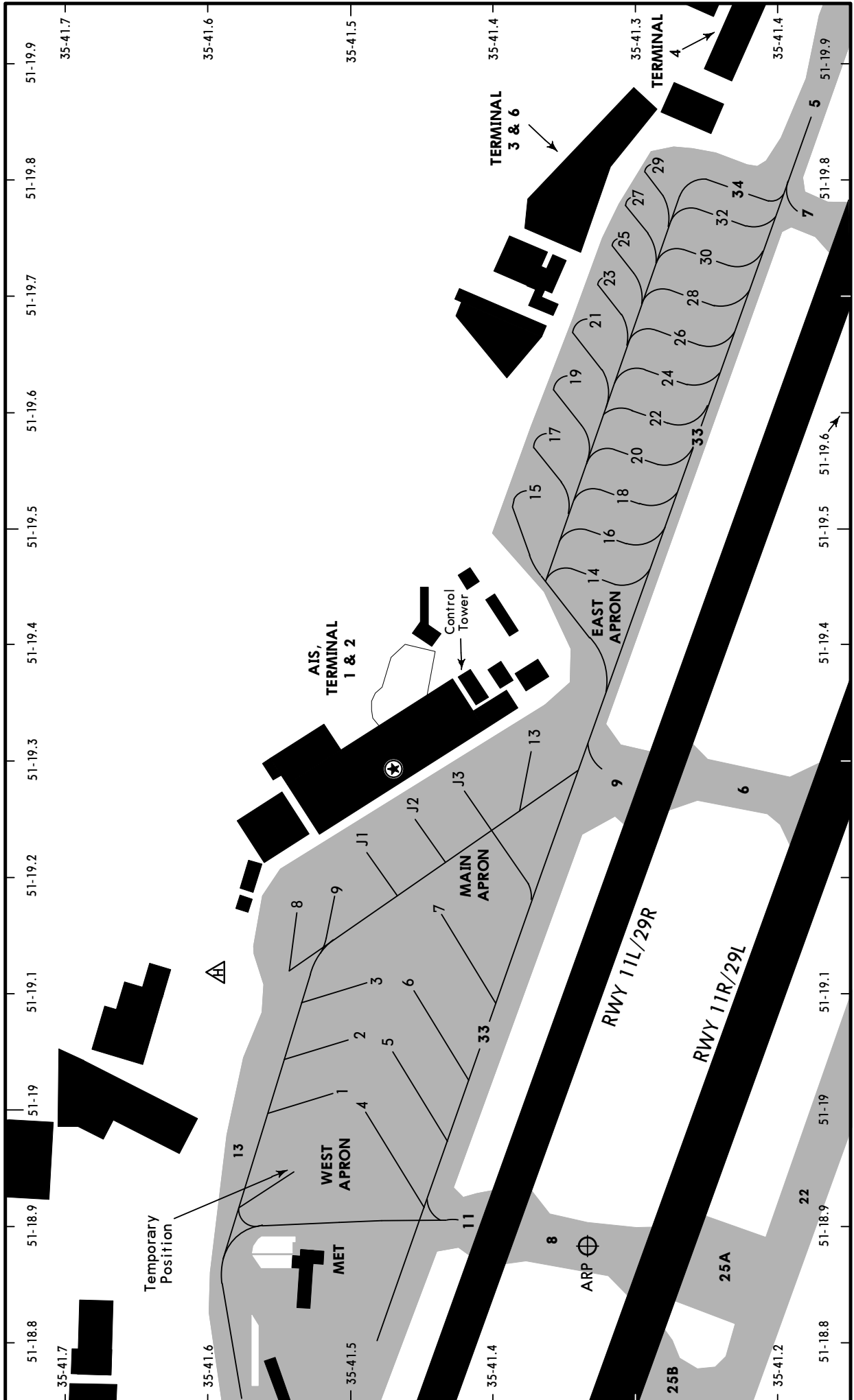
OIII/THR

JEPPesen

16 APR 04

10-9B

TEHRAN, IRAN  
MEHRABAD INTL



CHANGES: Apron. Stands.

© JEPPESEN SANDERSON, INC., 1998, 2004. ALL RIGHTS RESERVED.



OIII/THR


**JEPPESEN**  
 13 MAR 09 **10-9S**
**Standard**  
**TEHRAN, IRAN**  
**MEHRABAD INTL**

STRAIGHT-IN RWY		A	B	C	D	
11L	VOR <b>①</b>	<b>4600'</b> (638')	<b>4600'</b> (638')	<b>4600'</b> (638')	<b>4600'</b> (638')	
		<b>C2700m</b>	<b>C2700m</b>	<b>C2700m</b>	<b>C2700m</b>	
	<i>ALS out</i>	C2900m	C2900m	C2900m	C2900m	
11R	VOR <b>①</b>	<b>4600'</b> (651')	<b>4600'</b> (651')	<b>4600'</b> (651')	<b>4600'</b> (651')	
		<b>C2800m</b>	<b>C2800m</b>	<b>C2800m</b>	<b>C2800m</b>	
	<i>ALS out</i>	C3000m	C3000m	C3000m	C3000m	
29L	ILS	<b>4040'</b> (246')	<b>4040'</b> (246')	<b>4040'</b> (246')	<b>4040'</b> (246')	
	<i>FULL</i>	<b>R550m</b>	<b>R550m</b>	<b>R550m</b>	<b>R550m</b>	
	<i>Limited</i>	R750m	R750m	R750m	R750m	
	<i>ALS out</i>	R1300m	R1300m	R1300m	R1300m	
	LOC <b>①</b>	<b>4180'</b> (386')	<b>4180'</b> (386')	<b>4230'</b> (436')	<b>4230'</b> (436')	
		<b>R1100m</b>	<b>R1100m</b>	<b>R1300m</b>	<b>R1300m</b>	
	<i>ALS out</i>	R1500m	R1500m	R2000m	R2000m	
	LOC	<b>4180'</b> (386')	<b>4180'</b> (386')	<b>4230'</b> (436')	<b>4230'</b> (436')	
		<b>R1300m</b>	<b>R1300m</b>	<b>R1700m</b>	<b>R1700m</b>	
	<i>ALS out</i>	R2000m	R2000m	C2400m	C2400m	
	VOR-1 <b>①</b>	<b>4450'</b> (656')	<b>4450'</b> (656')	<b>4450'</b> (656')	<b>4450'</b> (656')	
		<b>R1500m</b>	<b>R1500m</b>	<b>C2300m</b>	<b>C2300m</b>	
	<i>ALS out</i>	R1500m	R1500m	C3000m	C3000m	
	VOR-1	<b>4450'</b> (656')	<b>4450'</b> (656')	<b>4450'</b> (656')	<b>4450'</b> (656')	
		<b>C2500m</b>	<b>C2500m</b>	<b>C2700m</b>	<b>C2700m</b>	
	<i>ALS out</i>	C3200m	C3200m	C3400m	C3400m	
	VOR-2 <b>①</b>	<b>4330'</b> (536')	<b>4330'</b> (536')	<b>4330'</b> (536')	<b>4330'</b> (536')	
		<b>R1500m</b>	<b>R1500m</b>	<b>R1700m</b>	<b>R1700m</b>	
	<i>ALS out</i>	R1500m	R1500m	C2400m	C2400m	
	NDB	<b>4450'</b> (656')	<b>4450'</b> (656')	<b>4450'</b> (656')	<b>4450'</b> (656')	
		<b>C2500m</b>	<b>C2500m</b>	<b>C2700m</b>	<b>C2700m</b>	
	<i>ALS out</i>	C3200m	C3200m	C3400m	C3400m	
	29R	VOR-1 <b>①</b>	<b>4450'</b> (653')	<b>4450'</b> (653')	<b>4450'</b> (653')	<b>4450'</b> (653')
			<b>R1500m</b>	<b>R1500m</b>	<b>C2600m</b>	<b>C2600m</b>
<i>ALS out</i>		R1500m	R1500m	C3000m	C3000m	
VOR-1		<b>4450'</b> (653')	<b>4450'</b> (653')	<b>4450'</b> (653')	<b>4450'</b> (653')	
		<b>C2800m</b>	<b>C2800m</b>	<b>C3000m</b>	<b>C3000m</b>	
<i>ALS out</i>		C3200m	C3200m	C3400m	C3400m	
VOR-2 <b>①</b>		<b>4330'</b> (533')	<b>4330'</b> (533')	<b>4330'</b> (533')	<b>4330'</b> (533')	
		<b>R1500m</b>	<b>R1500m</b>	<b>R2000m</b>	<b>R2000m</b>	
<i>ALS out</i>		R1500m	R1500m	C2400m	C2400m	
NDB		<b>4450'</b> (653')	<b>4450'</b> (653')	<b>4450'</b> (653')	<b>4450'</b> (653')	
		<b>C2800m</b>	<b>C2800m</b>	<b>C3000m</b>	<b>C3000m</b>	
<i>ALS out</i>		C3200m	C3200m	C3400m	C3400m	

**①** Continuous Descent Final Approach.

OIII/THR



**Standard**  
**TEHRAN, IRAN**  
 MEHRABAD INTL

CIRCLE-TO-LAND ❶	100 KT	135 KT	180 KT	205 KT
	4500' (538')	4500' (538')	4570' (608')	4670' (708')
Circling NDB DME or after apch to rwy 11L/R	4600' (638')	4600' (638')	4660' (698')	4670' (708')
	V1500m ❷	V1600m ❷	V2400m ❷	V3600m

❶ Not authorized North of airport.

❷ or higher minimums of preceding straight-in approach.

**TAKE-OFF RWY 11L/R, 29L/R**

	RL & RCLM	NIL (DAY only)
A	400m	500m
B		
C		
D		

OIII/THR



**JAA MINIMUMS**  
**TEHRAN, IRAN**  
 MEHRABAD INTL

STRAIGHT-IN RWY		A	B	C	D
11L	VOR DME	<b>4600'</b> (638')	<b>4600'</b> (638')	<b>4600'</b> (638')	<b>4600'</b> (638')
		<b>R1500m</b>	<b>R1500m</b>	<b>R1800m</b>	<b>R2000m</b>
	<i>ALS out</i>	R1500m	R1500m	R2000m	R2000m
11R	VOR DME	<b>4600'</b> (651')	<b>4600'</b> (651')	<b>4600'</b> (651')	<b>4600'</b> (651')
		<b>R1500m</b>	<b>R1500m</b>	<b>R2000m</b>	<b>R2000m</b>
	<i>ALS out</i>	R1500m	R1500m	R2000m	R2000m
29L	ILS	<b>4040'</b> (246')	<b>4040'</b> (246')	<b>4040'</b> (246')	<b>4040'</b> (246')
		<b>R600m</b>	<b>R600m</b>	<b>R600m</b>	<b>R600m</b>
	<i>ALS out</i>	R1000m	R1000m	R1000m	R1000m
	LOC	<b>4180'</b> (386')	<b>4180'</b> (386')	<b>4230'</b> (436')	<b>4230'</b> (436')
		<b>R900m</b>	<b>R1000m</b>	<b>R1000m</b>	<b>R1400m</b>
	<i>ALS out</i>	R1500m	R1500m	R1800m	R2000m
	VOR DME-1	<b>4450'</b> (656')	<b>4450'</b> (656')	<b>4450'</b> (656')	<b>4450'</b> (656')
		<b>R1200m</b>	<b>R1400m</b>	<b>R1400m</b>	<b>R1800m</b>
	<i>ALS out</i>	R1500m	R1500m	R2000m	R2000m
	VOR DME-2	<b>4330'</b> (536')	<b>4330'</b> (536')	<b>4330'</b> (536')	<b>4330'</b> (536')
		<b>R1000m</b>	<b>R1200m</b>	<b>R1200m</b>	<b>R1600m</b>
	<i>ALS out</i>	R1500m	R1500m	R2000m	R2000m
	NDB	<b>4450'</b> (656')	<b>4450'</b> (656')	<b>4450'</b> (656')	<b>4450'</b> (656')
		<b>R1200m</b>	<b>R1400m</b>	<b>R1400m</b>	<b>R1800m</b>
	<i>ALS out</i>	R1500m	R1500m	R2000m	R2000m
29R	VOR DME-1	<b>4450'</b> (653')	<b>4450'</b> (653')	<b>4450'</b> (653')	<b>4450'</b> (653')
		<b>R1500m</b>	<b>R1500m</b>	<b>R1800m</b>	<b>R2000m</b>
	<i>ALS out</i>	R1500m	R1500m	R2000m	R2000m
	VOR DME-2	<b>4330'</b> (533')	<b>4330'</b> (533')	<b>4330'</b> (533')	<b>4330'</b> (533')
		<b>R1400m</b>	<b>R1500m</b>	<b>R1600m</b>	<b>R1800m</b>
	<i>ALS out</i>	R1500m	R1500m	R2000m	R2000m
	NDB	<b>4450'</b> (653')	<b>4450'</b> (653')	<b>4450'</b> (653')	<b>4450'</b> (653')
		<b>R1500m</b>	<b>R1500m</b>	<b>R1800m</b>	<b>R2000m</b>
	<i>ALS out</i>	R1500m	R1500m	R2000m	R2000m

CIRCLE-TO-LAND ①	100 KT	135 KT	180 KT	205 KT
	<b>4500'</b> (538') ②	<b>4500'</b> (538') ②	<b>4570'</b> (608') ③	<b>4670'</b> (708')
	V1500m	V1600m	V2400m	V3600m
Circling NDB DME	<b>4610'</b> (648')	<b>4610'</b> (648')	<b>4670'</b> (708')	<b>4670'</b> (708')
	V1600m	V1600m	V3200m	V3600m

- ① Not authorized North of airport.
- ② After VOR DME 11 L/R: MDA(H) **4600'** (638').
- ③ After VOR DME 11 L/R: MDA(H) **4660'** (698').

**TAKE-OFF RWY 11L/R, 29L/R**

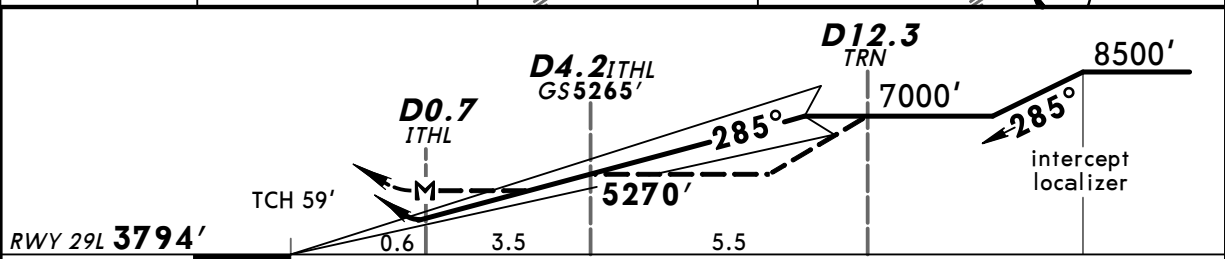
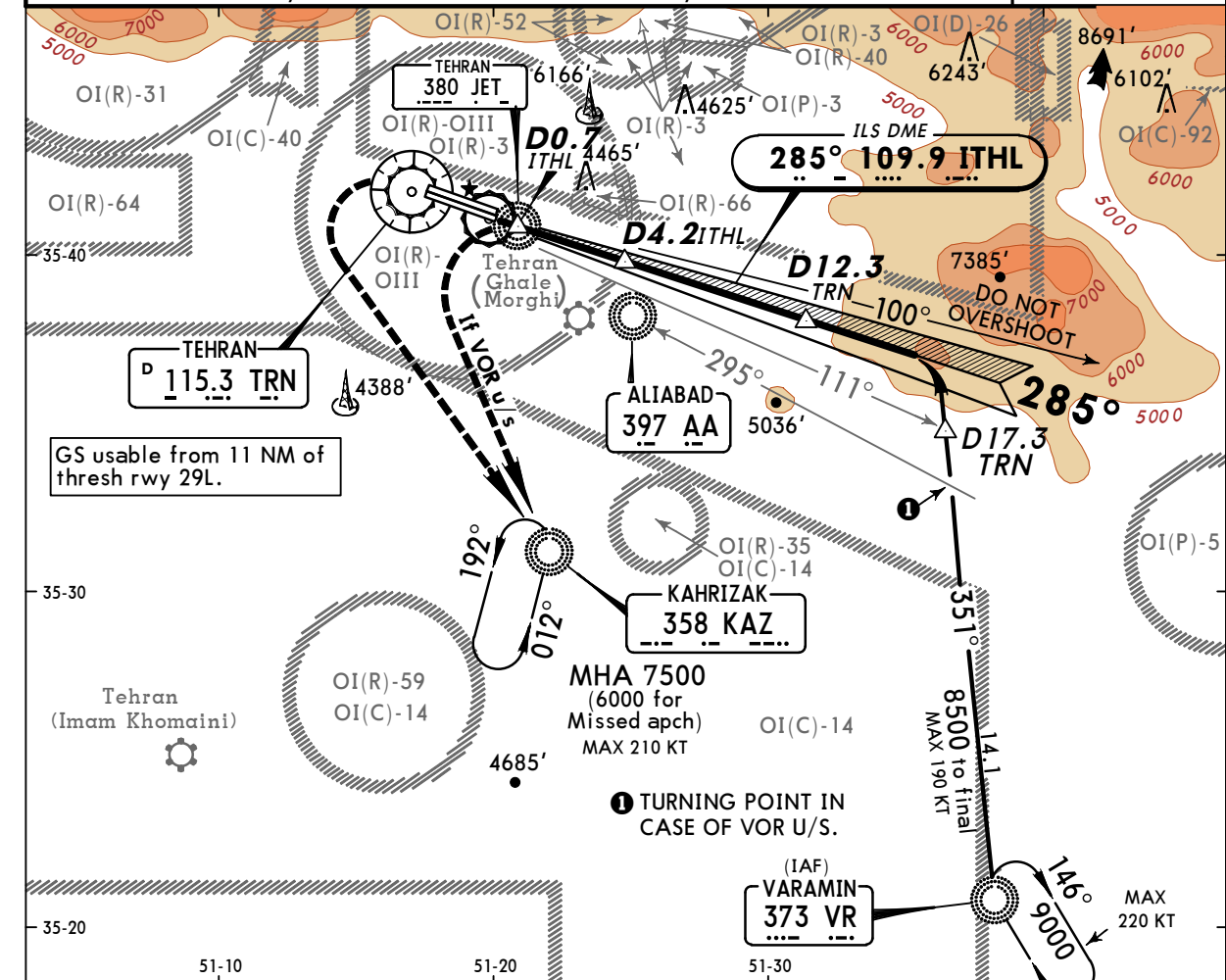
	RL & RCLM	NIL (DAY only)
A		
B		
C	400m	500m
D		

OIII/THR  
MEHRABAD INTL



TEHRAN, IRAN  
ILS-1 Rwy 29L

ATIS 128.0		MEHRABAD Approach (R) 119.7 124.45 125.1		MEHRABAD Tower 118.1	Ground 121.7 121.9
LOC ITHL 109.9	Final Apch Crs 285°	GS D4.2 ITHL 5265' (1471')	ILS DA(H) 4040' (246')	Apt Elev 3962' RWY 3794'	
<b>MISSED APCH:</b> Climb on R-105 inbound to VOR, then turn LEFT to KAZ NDB to rejoin holding at 6000'. If VOR u/s: Turn LEFT to KAZ NDB and rejoin holding at 6000'.					
Alt Set: hPa		Rwy Elev: 131 hPa	Trans level: By ATC	Trans alt: 9000'	MSA TRN VOR



Gnd speed-Kts	70	90	100	120	140	160	HIALS Refer to Missed Apch above
ILS GS	3.30°	413	530	589	707	825	
MAP at D0.7 ITHL							

STRAIGHT-IN LANDING RWY 29L				CIRCLE-TO-LAND	
ILS		LOC (GS out)		Not authorized North of airport	
DA(H) 4040' (246')		MDA(H) AB: 4180' (386') CD: 4230' (436')			
FULL		ALS out		Max Kts	MDA(H)
A				100	4500' (538') 1600m
B				135	
C	800m	1200m		180	4560' (598') 2400m
D				205	4660' (698') 3600m

PANS OPS 4

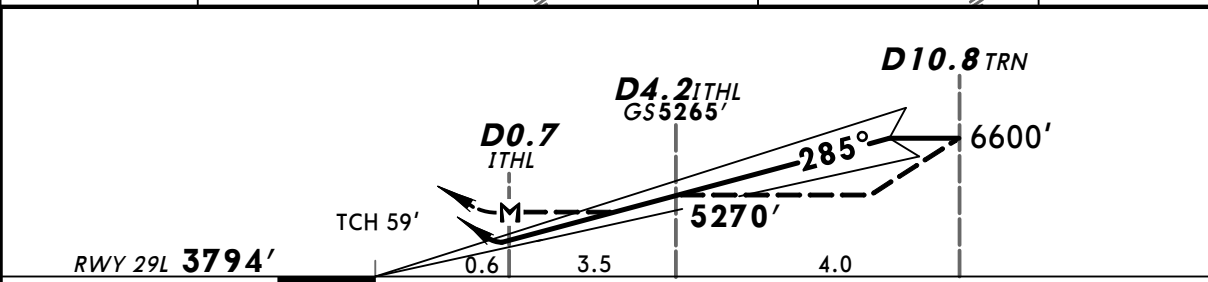
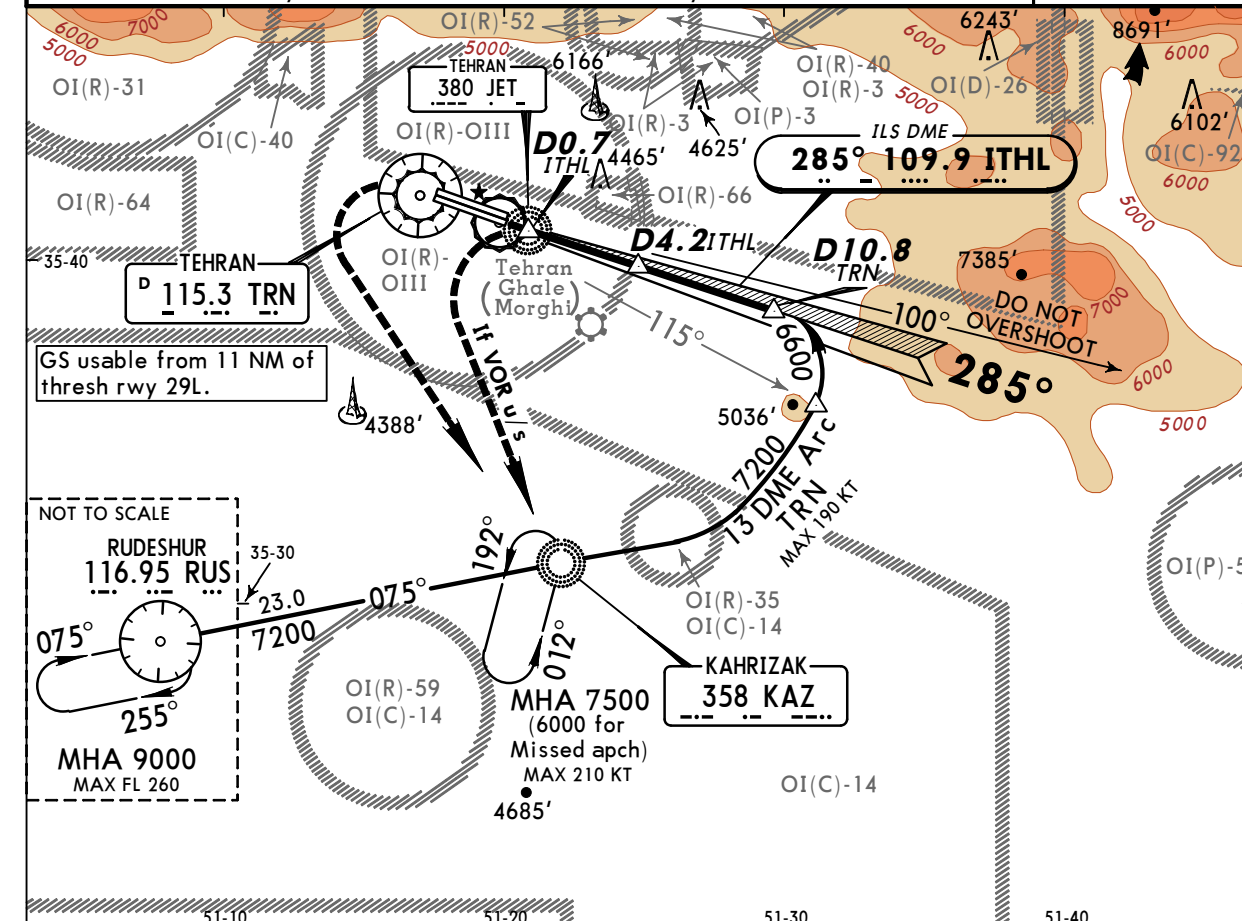
CHANGES: Minimums.

OIII/THR  
MEHRABAD INTL

JEPPESEN  
10 OCT 08 (11-2)

TEHRAN, IRAN  
ILS-3 Rwy 29L

ATIS 128.0		MEHRABAD Approach (R) 119.7 124.45 125.1			MEHRABAD Tower 118.1	Ground 121.7 121.9
LOC ITHL 109.9	Final Apch Crs 285°	GS D4.2 ITHL 5265' (1471')	ILS DA(H) 4040' (246')	Apt Elev 3962' RWY 3794'		
<b>MISSED APCH:</b> Climb on R-105 inbound to TRN VOR, then turn LEFT to KAZ NDB to rejoin holding at 6000'. If VOR u/s: Turn LEFT to KAZ NDB and rejoin holding at 6000'.						
Alt Set: hPa	Rwy Elev: 131 hPa	Trans level: By ATC	Trans alt: 9000'		MSA TRN VOR	



Gnd speed-Kts	70	90	100	120	140	160	HIALS Refer to Missed Apch above
ILS GS	3.30°	413	530	589	707	825	
MAP at D0.7 ITHL							

STRAIGHT-IN LANDING RWY 29L				CIRCLE-TO-LAND	
ILS		LOC (GS out)		Not authorized North of airport	
DA(H) 4040' (246')		MDA(H) AB: 4180' (386') CD: 4230' (436')			
FULL		ALS out		Max Kts	MDA(H)
A				100	4500' (538') 1600m
B				135	
C	800m	1200m		180	4560' (598') 2400m
D				205	4660' (698') 3600m

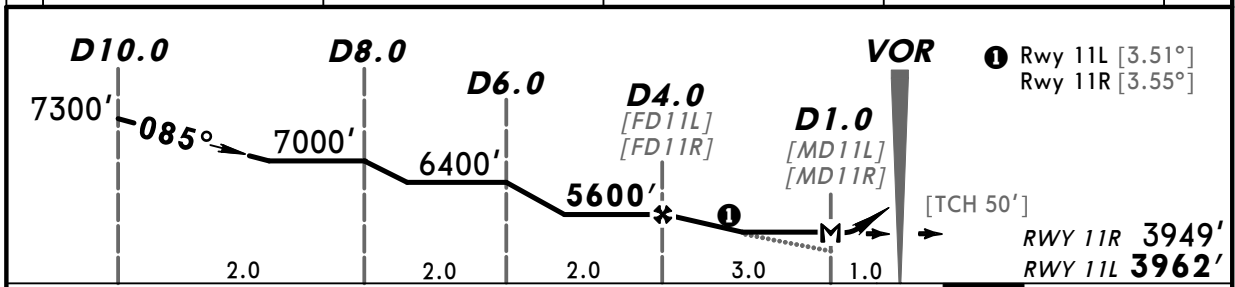
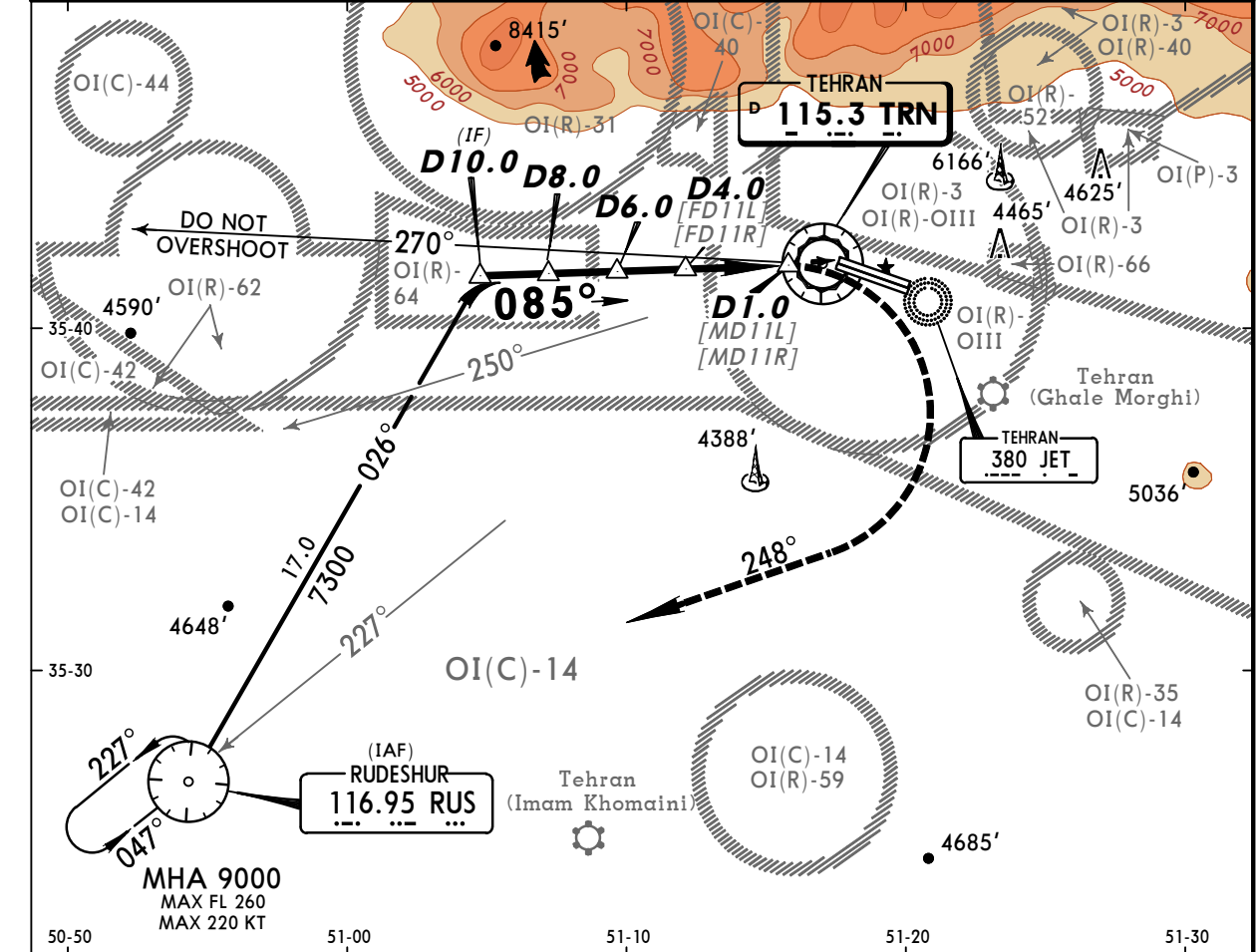
PANS OPS 4

OIII/THR  
MEHRABAD INTL

JEPPESEN  
1 AUG 08 (13-1)

TEHRAN, IRAN  
VOR DME-3 Rwy 11L/R

ATIS 128.0		MEHRABAD Approach (R) 119.7 124.45 125.1		MEHRABAD Tower 118.1		Ground 121.7 121.9	
VOR TRN 115.3	Final Apch Crs 085°	Minimum Alt D4.0 5600' (1638')	MDA(H) RWY 11L 4600' (638')	MDA(H) RWY 11R 4600' (651')	Apt Elev RWY 11L 3962'	RWY 11R 3949'	
MISSED APCH: Climbing turn RIGHT onto 248° to 7000' to RUS VOR and as directed.							
Alt Set: hPa		Rwy Elev: 137 hPa		Trans level: By ATC		Trans alt: 9000'	



Gnd speed-Kts	70	90	100	120	140	160	ALS	7000'	RUS
Rwy 11L: Desc angle [3.51°]	435	559	621	745	870	994	PAPI	RT	248°
Rwy 11R: Desc angle [3.55°]	440	565	628	754	880	1005			116.95
MAP at D1.0									

STRAIGHT-IN LANDING				CIRCLE-TO-LAND			
RWY 11L MDA(H) 4600' (638')		RWY 11R MDA(H) 4600' (651')		Not authorized North of airport			
ALS out		ALS out		Max Kts	MDA(H)		
A				100	4600' (638') 3000m		
B	3000m			135	4660' (698') 3200m		
C				180	4660' (698') 3600m		
D	3200m			205	4660' (698') 3600m		

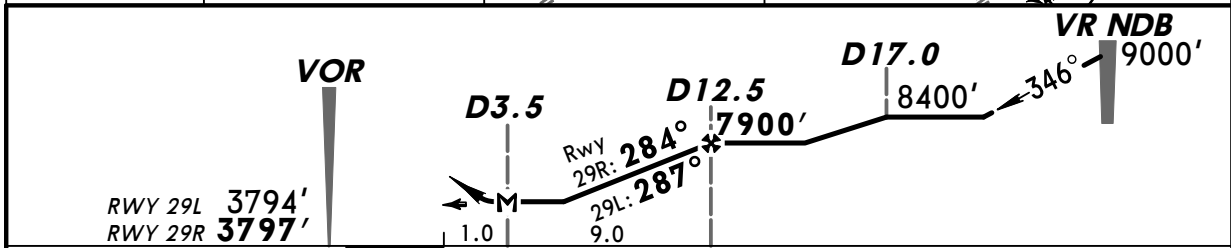
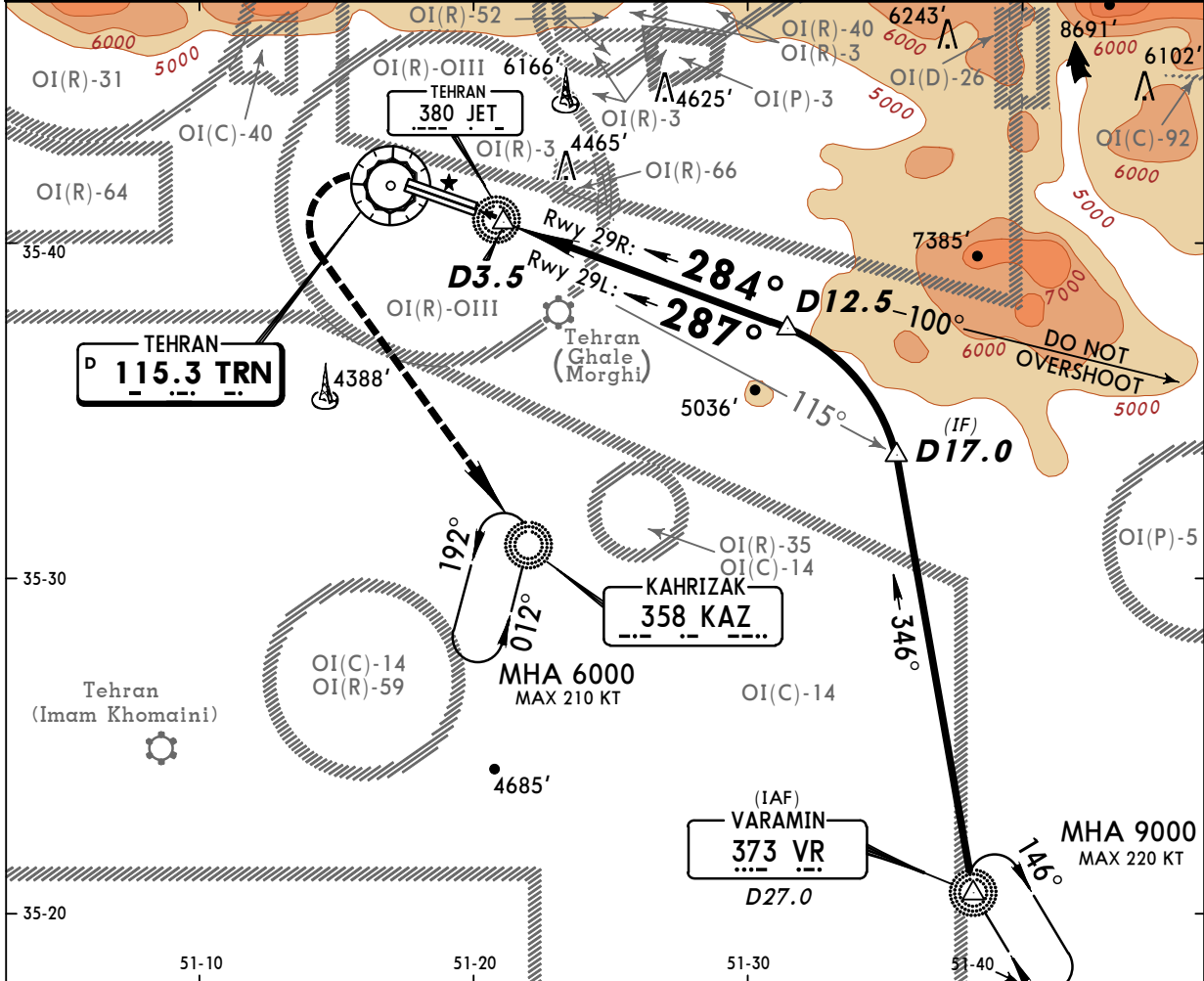
PANS OPS 4

OIII/THR  
MEHRABAD INTL

JEPPESEN  
1 AUG 08 (13-2)

TEHRAN, IRAN  
NDB VOR DME-1 Rwy 29L/R

ATIS 128.0		MEHRABAD Approach (R) 119.7 124.45 125.1		MEHRABAD Tower 118.1		Ground 121.7 121.9	
BRIEFING STRIP™	VOR TRN <b>115.3</b>	Final Apch Crs RWY 29L <b>287°</b> RWY 29R <b>284°</b>	Minimum Alt <b>D12.5</b> 7900' (4103')	MDA(H) RWY 29L <b>4450'</b> (656')	MDA(H) RWY 29R <b>4450'</b> (653')	Apt Elev <b>3962'</b> RWY 29L <b>3794'</b> RWY 29R <b>3797'</b>	
	<b>MISSED APCH: Climb STRAIGHT AHEAD to VOR, then turn LEFT to KAZ NDB to rejoin holding at 6000'.</b>						
Alt Set: hPa		Rwy Elev: 132 hPa		Trans level: By ATC		Trans alt: 9000'	



					HIALS	TRN
					PAPI	115.3
MAP at D3.5						

	STRAIGHT-IN LANDING				CIRCLE-TO-LAND	
	RWY 29L		RWY 29R		Not authorized North of airport	
	MDA(H)	ALS out	MDA(H)	ALS out	MDA(H)	
A						
B	800m	1600m	1200m	1600m	4500' (538')	1600m
C	2000m	2800m		2800m	4560' (598')	2800m
D	2400m	3200m		3200m	4660' (698')	3600m

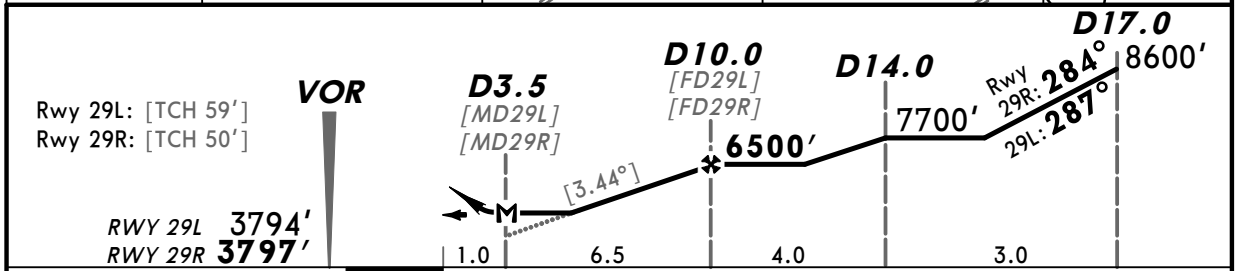
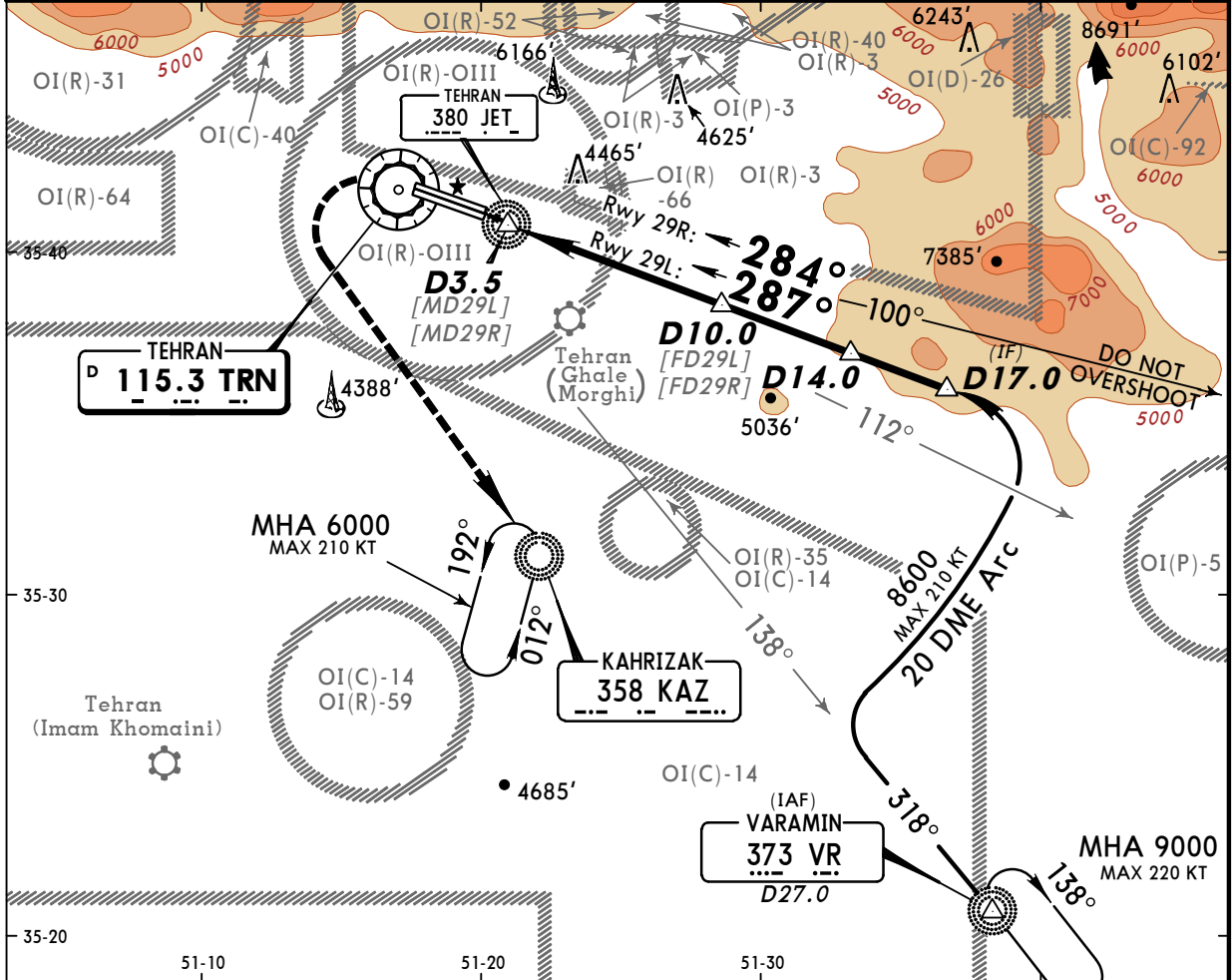
PANS OPS 4

OIII/THR  
MEHRABAD INTL

JEPPESEN  
4 JUL 08 (13-3)

TEHRAN, IRAN  
VOR DME-2 Rwy 29L/R

ATIS 128.0		MEHRABAD Approach (R) 119.7 124.45 125.1		MEHRABAD Tower 118.1		Ground 121.7 121.9	
BRIEFING STRIP™	VOR TRN 115.3	Final Apch Crs RWY 29L 287° RWY 29R 284°	Minimum Alt D10.0 6500' (2703')	MDA(H) RWY 29L 4330' (536')	MDA(H) RWY 29R 4330' (533')	Apt Elev 3962' RWY 29L 3794' RWY 29R 3797'	
	MISSED APCH: Climb STRAIGHT AHEAD to VOR, then turn LEFT to KAZ NDB to rejoin holding at 6000'.						
Alt Set: hPa		Rwy Elev: 132 hPa		Trans level: By ATC		Trans alt: 9000'	



Gnd Speed-Kts	70	90	100	120	140	160	HIALS PAPI TRN 115.3
Descent Gradient 6.00% or Descent angle [3.44°]	426	547	608	730	851	973	
MAP at D3.5							

	STRAIGHT-IN LANDING				Max Kts	CIRCLE-TO-LAND	
	RWY 29L		RWY 29R			Not authorized North of airport	
	MDA(H) 4330' (536')		MDA(H) 4330' (533')			MDA(H)	
A		ALS out		ALS out	100	4500' (538')	1600m
B	800m	1600m	1200m	1600m	135		
C	1600m	2400m		2400m	180	4560' (598')	2400m
D	2000m	2800m		2800m	205	4660' (698')	3600m

PANS OPS 4

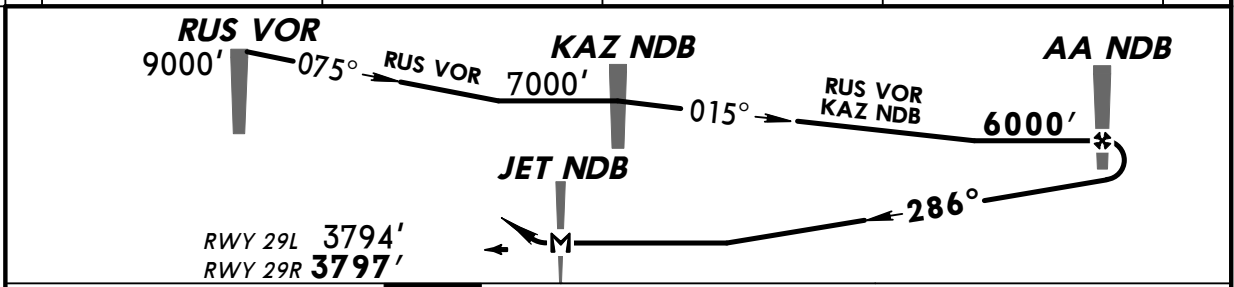
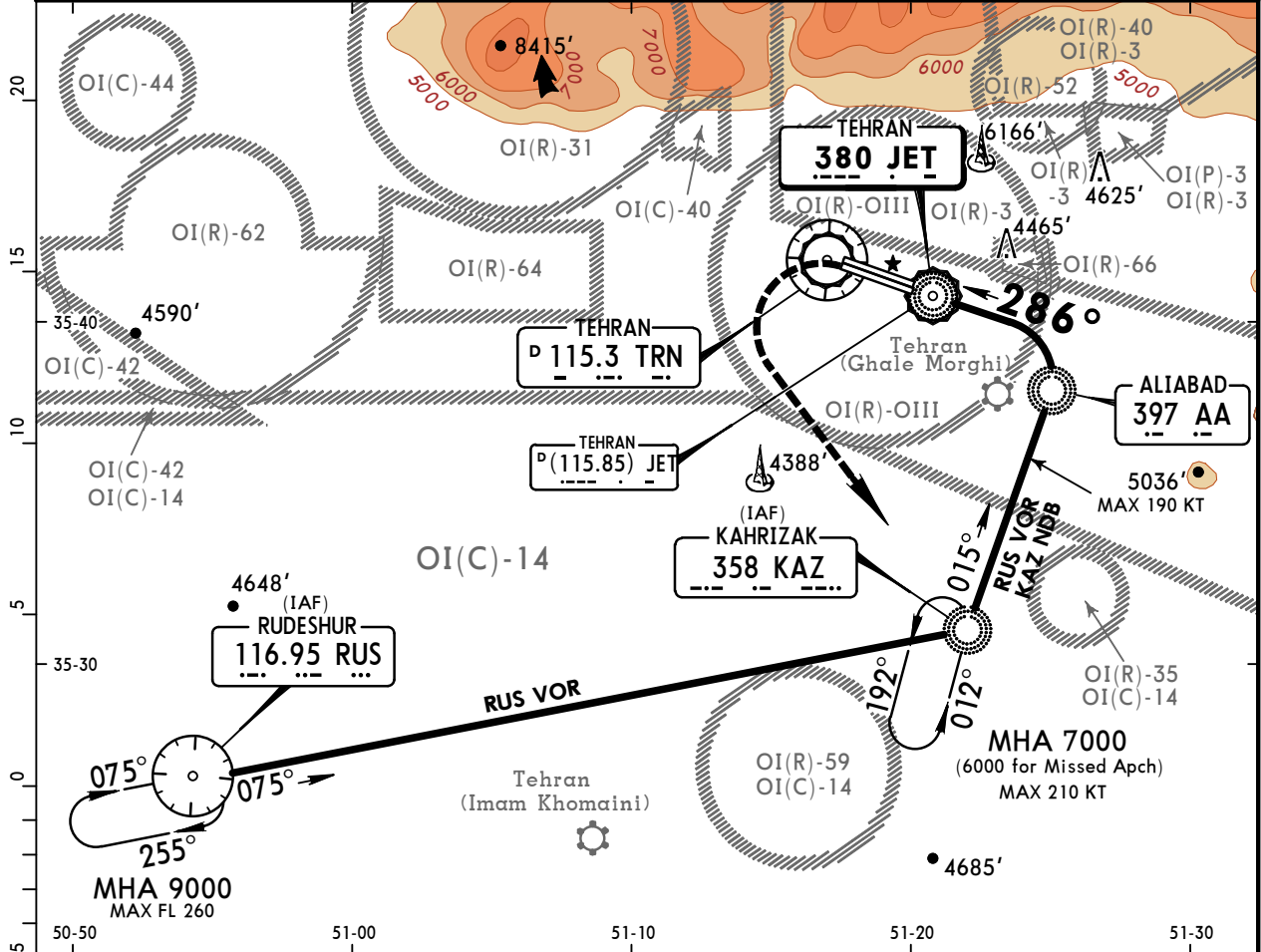


**OIII/THR**  
**MEHRABAD INTL**

**JEPPESEN**  
4 JUL 08 **(16-1)** KAZ NDB or RUS VOR NDB Rwy 29L/R

**TEHRAN, IRAN**

ATIS <b>128.0</b>		MEHRABAD Approach (R) <b>119.7 124.45 125.1</b>		MEHRABAD Tower <b>118.1</b>		Ground <b>121.7 121.9</b>	
<b>NDB</b> JET <b>380</b>	<b>Final</b> Apch Crs <b>286°</b>	<b>Minimum Alt</b> AA NDB <b>6000'</b> (2203')	<b>MDA(H)</b> RWY 29L <b>4450'</b> (656')	<b>MDA(H)</b> RWY 29R <b>4450'</b> (653')	<b>Apt Elev</b> <b>3962'</b> RWY 29L <b>3794'</b> RWY 29R <b>3797'</b>		
<b>MISSED APCH:</b> Climb STRAIGHT AHEAD to 5000', then climbing turn LEFT to KAZ NDB to rejoin holding at 6000'.							
Alt Set: hPa		Rwy Elev: 132 hPa		Trans level: By ATC		Trans alt: 9000' TRN VOR/JET NDB	



MAP at JET NDB				HIALS	5000'	LT	6000' KAZ 358
				PAPI			

PANS OPS 4	STRAIGHT-IN LANDING				CIRCLE-TO-LAND	
	RWY 29L		RWY 29R		Not authorized North of airport	
	MDA(H) <b>4450'</b> (656')		MDA(H) <b>4450'</b> (653')		MDA(H)	
	ALS out		ALS out		Max Kts	
A	1200m	1600m	1200m	1600m	100	4500'(538') 1600m
B	2000m	2800m	2800m		135	4560'(598') 2800m
C	2800m	3200m	3200m		180	4660'(698') 3600m
D	2800m	3200m	3200m		205	4660'(698') 3600m

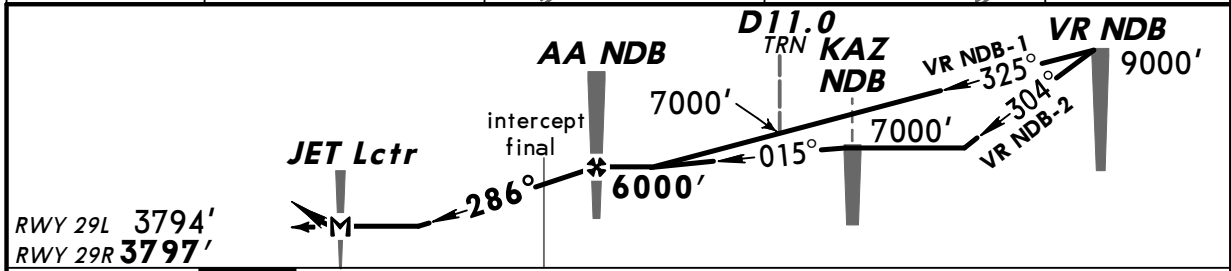
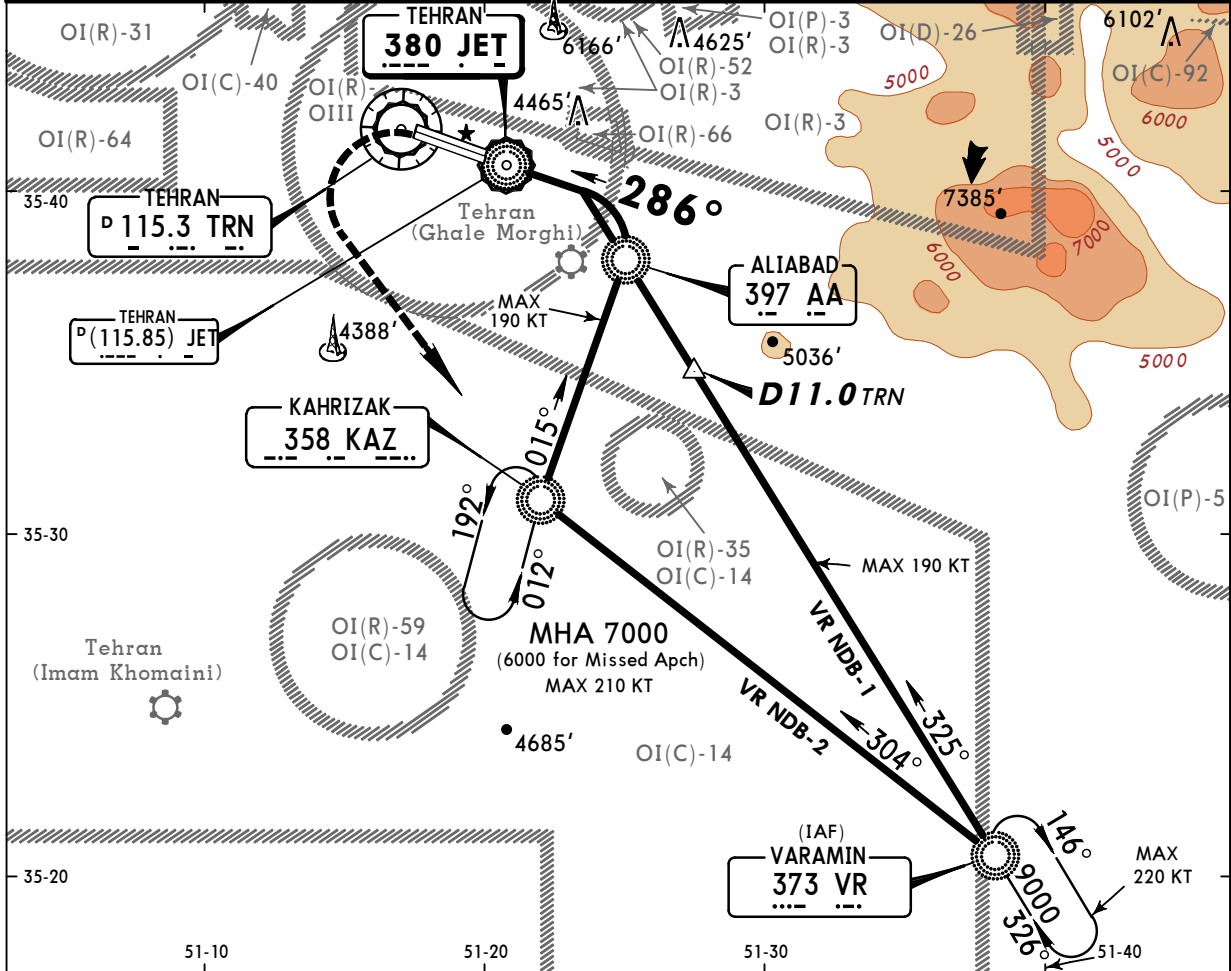
OIII/THR  
MEHRABAD INTL

4 JUL 08 (16-2)

JEPPESSEN VR NDB-1 TEHRAN, IRAN  
or VR NDB-2 Rwy 29L/R

BRIEFING STRIP™

ATIS 128.0		MEHRABAD Approach (R) 119.7 124.45 125.1		MEHRABAD Tower 118.1		Ground 121.7 121.9	
Lctr JET <b>380</b>	Final Apch Crs <b>286°</b>	Minimum Alt AA NDB <b>6000'</b> (2203')	MDA(H) RWY 29L <b>4450'</b> (656')	MDA(H) RWY 29R <b>4450'</b> (653')	Apt Elev RWY 29L <b>3794'</b>	RWY 29R <b>3797'</b>	
<b>MISSED APCH: Climb STRAIGHT AHEAD to 5000', then climbing turn LEFT to KAZ NDB to rejoin holding at 6000'.</b>							
Alt Set: hPa		Rwy Elev: 132 hPa		Trans level: By ATC		Trans alt: 9000'	



MAP at JET Lctr				HIALS	5000'	6000'	KAZ 358
				PAPI	↑	← LT	

	STRAIGHT-IN LANDING				CIRCLE-TO-LAND	
	RWY 29L		RWY 29R		Not authorized North of airport	
	MDA(H) <b>4450'</b> (656')		MDA(H) <b>4450'</b> (653')		MDA(H)	
	ALS out		ALS out		Max Kts	
A	1200m	1600m	1200m	1600m	100	4500' (538') 1600m
B	2000m	2800m	2800m		135	4560' (598') 2800m
C	2800m	3200m	3200m		205	4660' (698') 3600m

PANS OPS 4

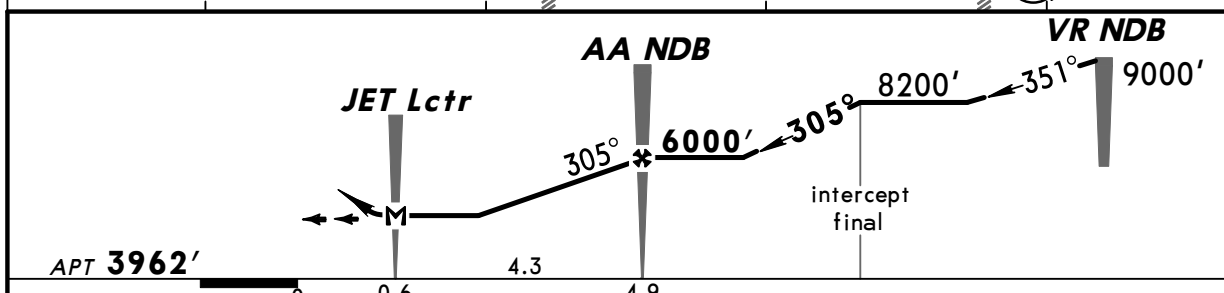
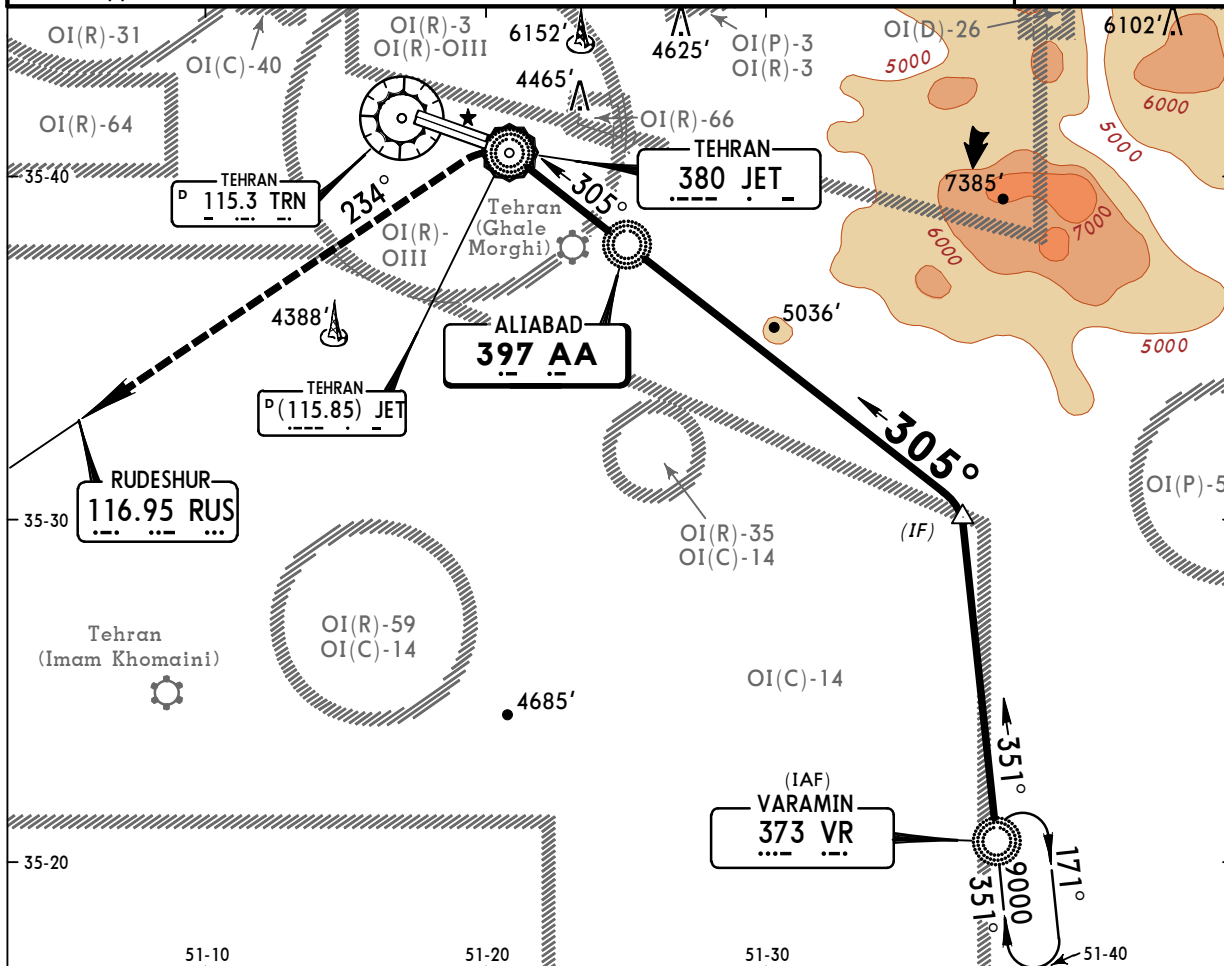
OIII/THR  
MEHRABAD INTL

JEPPESEN  
4 JUL 08 (16-3)

TEHRAN, IRAN  
CIRCLING NDB

BRIEFING STRIP™

ATIS	MEHRABAD Approach (R)			MEHRABAD Tower	Ground
128.0	119.7	124.45	125.1	118.1	121.7 121.9
NDB AA <b>397</b>	Final Apch Crs <b>305°</b>	Minimum Alt AA NDB <b>6000'</b> (2038')	MDA(H) Refer to Minimums	Apt Elev <b>3962'</b>	
<b>MISSED APCH: Turn LEFT onto 234° to RUS VOR climbing to 9000'.</b>					
Alt Set: hPa		Apt Elev: 137 hPa		Trans level: By ATC	
Initial approach restricted to MAX 220 KT.				Trans alt: 9000'	
					MSA JET NDB



Lighting-Refer to Airport Chart	234°	9000'	RUS 116.95
MAP at JET Lctr	LT	↑	

PANS OPS 4

		CIRCLE-TO-LAND	
Not authorized North of airport			
	Max Kts	MDA(H)	
A	100	<b>4500'</b> (538')	1600m
B	135	<b>4560'</b> (598')	2400m
C	180	<b>4660'</b> (698')	3600m
D	205	<b>4660'</b> (698')	3600m

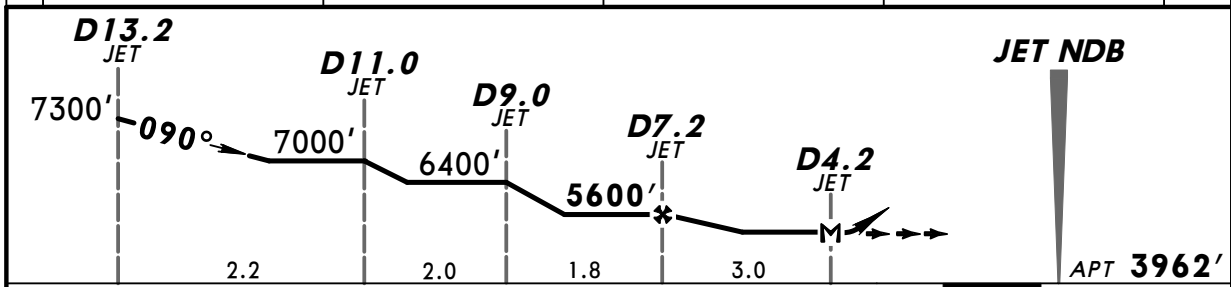
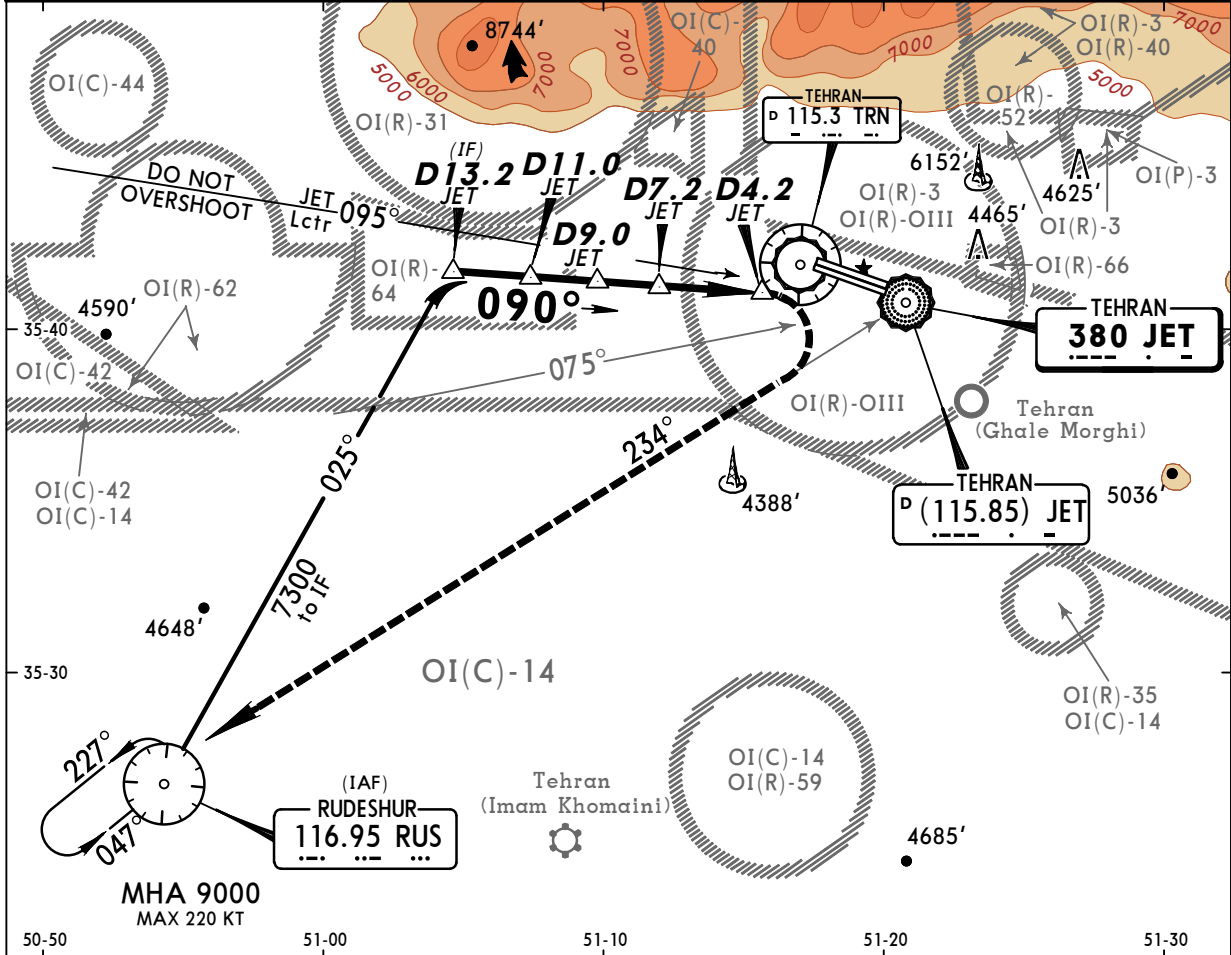
OIII/THR  
MEHRABAD INTL

JEPPESEN  
23 MAY 08 (16-4) Eff 5 Jun

TEHRAN, IRAN  
CIRCLING NDB DME

BRIEFING STRIP™

ATIS 128.0		MEHRABAD Approach (R) 119.7 124.45 125.1		MEHRABAD Tower 118.1	Ground 121.7 121.9
NDB JET <b>380</b>	Final Apch Crs <b>090°</b>	Minimum Alt <b>D7.2 JET TAC</b> <b>5600'</b> (1638')	MDA(H) Refer to Minimums	Apt Elev <b>3962'</b>	
<p><b>MISSED APCH: Turn RIGHT onto 234° from JET NDB to RUS VOR and climb to 7000', and as directed.</b></p>					
Alt Set: hPa		Apt Elev: 137 hPa	Trans level: By ATC	Trans alt: 9000'	MSA JET NDB



Lighting-Refer to Airport Chart	<b>234°</b>	<b>7000'</b>	RUS
	RT	↑	<b>116.95</b>

PANS OPS 4

		CIRCLE-TO-LAND	
Not authorized North of airport			
	Max Kts	MDA(H)	
A	100	<b>4610'</b> (648')	1600m
B	135	<b>4670'</b> (708')	3200m
C	180	<b>4670'</b> (708')	3600m
D	205	<b>4670'</b> (708')	3600m