

JEPPESSEN

15 FEB 02

10-2

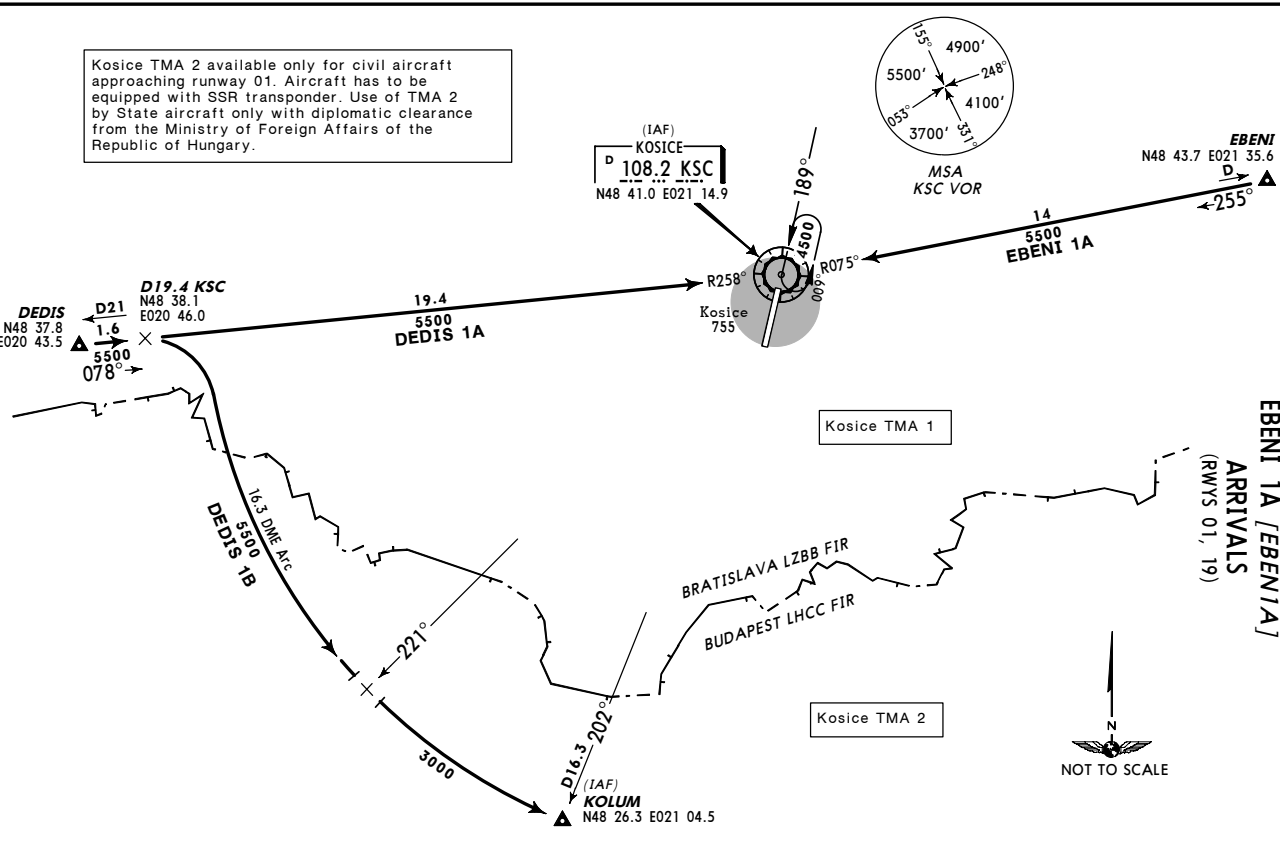
EH 21 Feb

KOSICE, SLOVAKIA

STAR

TRANS LEVEL: BY ATC  
TRANS ALT: 6000

DEDIS 1A [DEDI1A], DEDIS 1B [DEDI1B]  
EBENI 1A [EBEN1A]  
ARRIVALS (RWYS 01, 19)



JEPPESSEN

15 FEB 02

10-2A

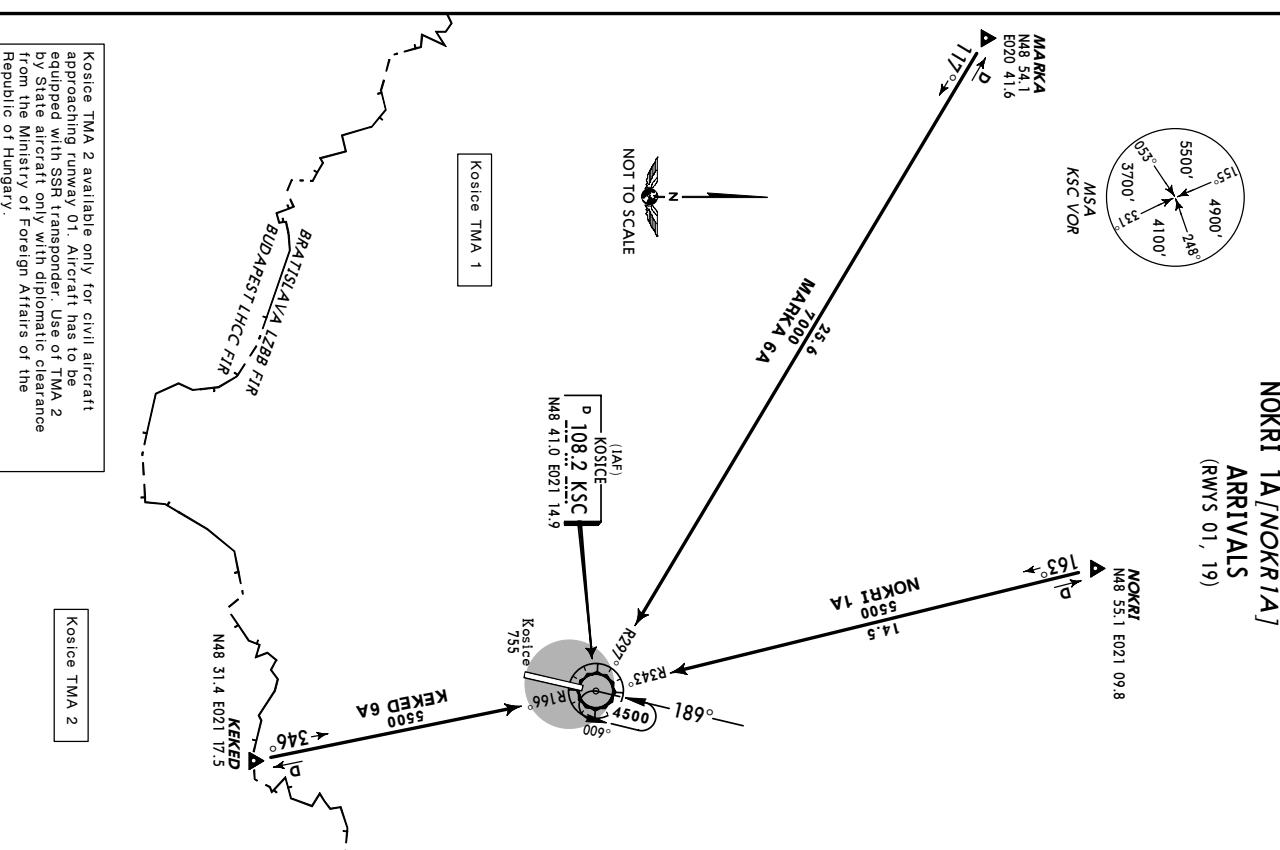
EH 21 Feb

KOSICE, SLOVAKIA

STAR

TRANS LEVEL: BY ATC  
TRANS ALT: 6000

KEKED 6A [KEKE6A], MARKA 6A [MARK6A]  
NOKRI 1A [NOKRI1A]  
ARRIVALS (RWYS 01, 19)



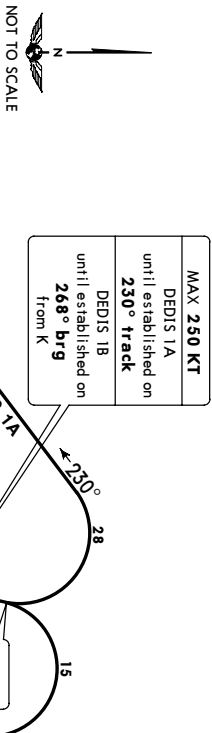
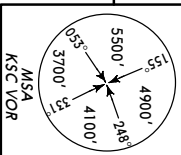
Kosice TMA 2 available only for civil aircraft approaching runway 01. Aircraft has to be equipped with SSR transponder. Use of TMA 2 by State aircraft only with diplomatic clearance from the Ministry of Foreign Affairs of the Republic of Hungary.

Kosice TMA 2 available only for civil aircraft approaching runway 01. Aircraft has to be equipped with SSR transponder. Use of TMA 2 by State aircraft only with diplomatic clearance from the Ministry of Foreign Affairs of the Republic of Hungary.

**LZKZ/KSC**  
KOSICE  
10 OCT 03 (10-3)  
**JEPPESSEN**  
KOSICE, SLOVAKIA  
**STD**

KOSICE	Trans alt: 6000'
Approach/Reader	119.85
Appt Elev	755'
Trans level: By ATC	Trans alt: 6000'
Contract KOSICE	Approach/Reader immediately after take-off.

**DEDIS 1A [DEDIA], DEDIS 1B [DEDIB]**  
**DEDIS 1Y [DEDIY], DEDIS 1Z [DEDIZ]**  
**RWYS 01, 19 DEPARTURES**



MAX 250 KT	DEDIS 1A	until established on 230° track
MAX 250 KT	DEDIS 1B	until established on 268° brg from K
MAX 250 KT	DEDIS 1Y	until established on KSC R-258
MAX 250 KT	DEDIS 1Z	until established on 274° track

Grnd speed-KT	75	100	150	200	250	300
334' per NM	418	557	835	1114	1392	1671
304' per NM	380	506	760	1013	1266	1519

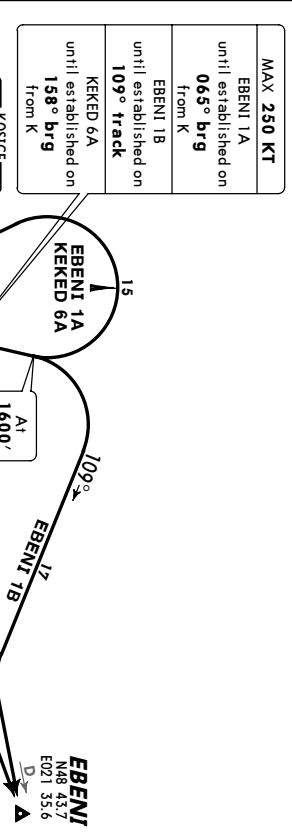
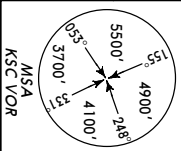
SID	RWY	ROUTING
DEDIS 1A	01	Climb on runway heading, at 1600' turn LEFT, 230° track, intercept KSC R-258 to DEDIS.
DEDIS 1B	19	Climb on runway heading, at 1600' turn RIGHT to K, 268° bearing, intercept KSC R-258 to DEDIS.
DEDIS 1Y	19	On runway heading to KE, turn LEFT to KSC, intercept KSC R-258 to DEDIS.
DEDIS 1Z	19	On runway heading to KE, turn LEFT to KSC, intercept KSC R-258 to DEDIS.

CHANGES: DEDIS 1Z routing description, new format. © JEPPESSEN SANDERSON, INC., 2003. ALL RIGHTS RESERVED.

**LZKZ/KSC**  
KOSICE  
10 OCT 03 (10-3A)  
**JEPPESSEN**  
KOSICE, SLOVAKIA  
**STD**

KOSICE	Trans alt: 6000'
Approach/Reader	119.85
Appt Elev	755'
Trans level: By ATC	Trans alt: 6000'
Contract KOSICE	Approach/Reader immediately after take-off.

**EBENI 1A [EBENIA], EBENI 1B [EBENIB]**  
**EBENI 1Z [EBENIZ], KEKED 6A [KEKE6A]**  
**KEKED 6Y [KEKE6Y]**  
**RWYS 01, 19 DEPARTURES**



MAX 250 KT	EBENI 1A	until established on 109° track
MAX 250 KT	EBENI 1B	until established on 139° brg from KE
MAX 250 KT	EBENI 1Z	until established on KSC R-075
MAX 250 KT	KEKED 6A	until established on 158° brg from KE
MAX 250 KT	KEKED 6Y	until established on 139° brg from KE

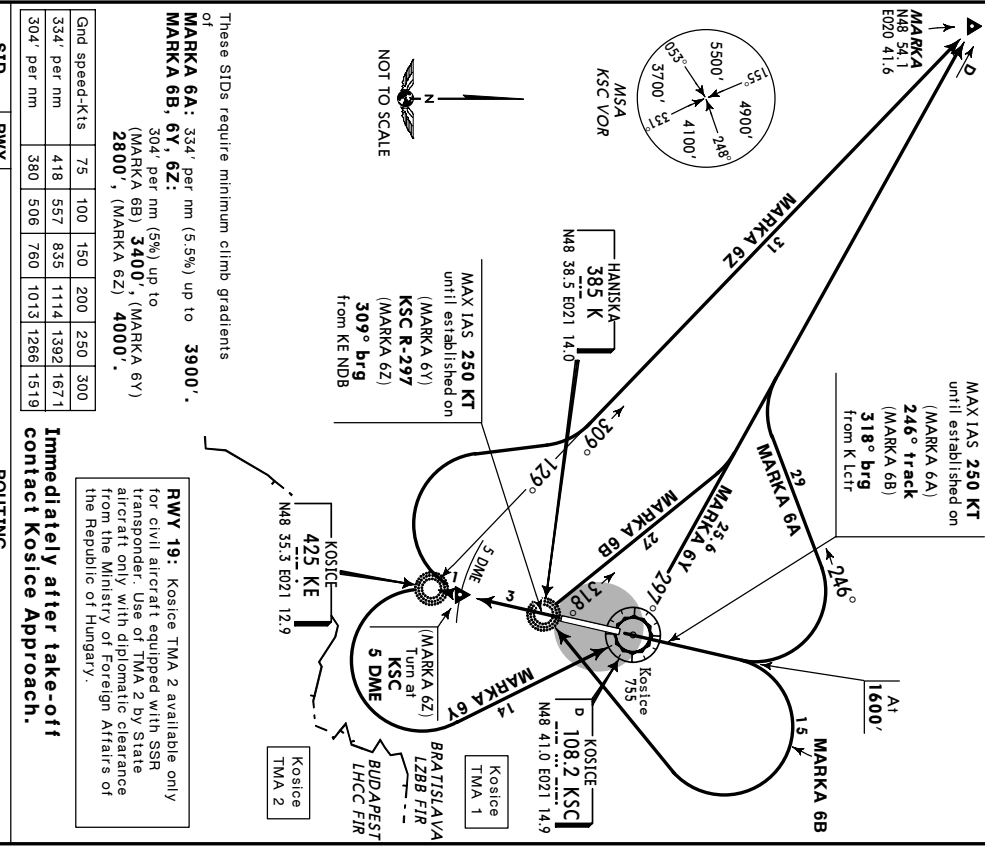
Grnd speed-KT	75	100	150	200	250	300
334' per NM	418	557	835	1114	1392	1671
304' per NM	380	506	760	1013	1266	1519

SID	RWY	ROUTING
EBENI 1A	01	Climb on runway heading, at 1600' turn LEFT to K, 065° bearing, intercept KSC R-075 to EBENI.
EBENI 1B	19	Climb on runway heading, at 1600' turn RIGHT, 109° track, intercept KSC R-075 to EBENI.
EBENI 1Z	19	On runway heading to KE, turn RIGHT to KSC, intercept KSC R-075 to EBENI.
KEKED 6A	01	Climb on runway heading, at 1600' turn LEFT to K, 158° bearing, intercept KSC R-166 to KEKED.
KEKED 6Y	19	On runway heading to KE, turn LEFT, 139° bearing to KEKED.

CHANGES: New format. © JEPPESSEN SANDERSON, INC., 2003. ALL RIGHTS RESERVED.

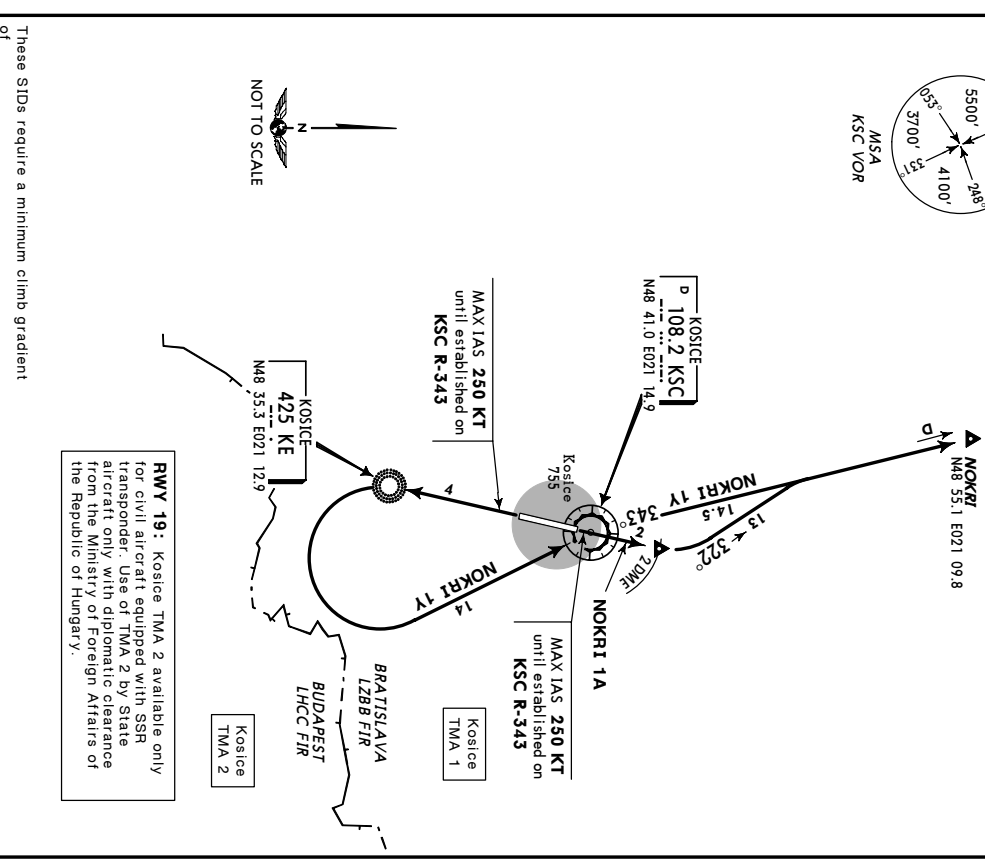
**SID**  
**JEPPesen** 15 FEB 02 (10-3B) EFF 21 Feb  
**KOSICE, SLOVAKIA**  
 KOSICE  
 KOSICE Approach (R) **119.85**  
 TRANS LEVEL: BY ATC  
 TRANS ALTI: 6000'

**MARKA 6A [MARK6A], MARKA 6B [MARK6B]**  
**MARKA 6Y [MARK6Y], MARKA 6Z [MARK6Z]**  
**DEPARTURES**  
 (RWYS 01, 19)



**SID**  
**JEPPesen** 15 FEB 02 (10-3C) EFF 21 Feb  
**KOSICE, SLOVAKIA**  
 KOSICE  
 KOSICE Approach (R) **119.85**  
 TRANS LEVEL: BY ATC  
 TRANS ALTI: 6000'

**NOKRI 1A [NOKRI1A], NOKRI 1Y [NOKRI1Y]**  
**DEPARTURES**  
 (RWYS 01, 19)

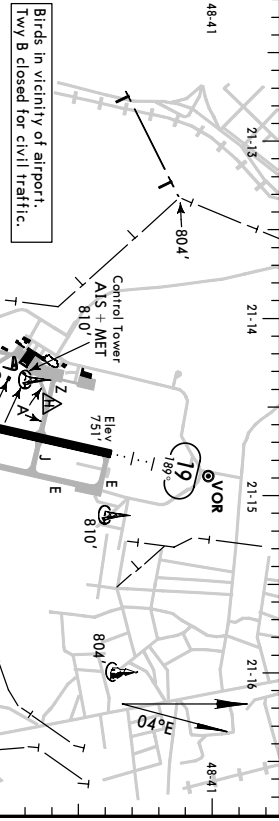


**LZKZ/KSC**  
**APR Elev 755'**  
 189.19°/1.5 from KSC 108.2

**JEPPESSEN**  
 4 APR 03 **(10-9)**

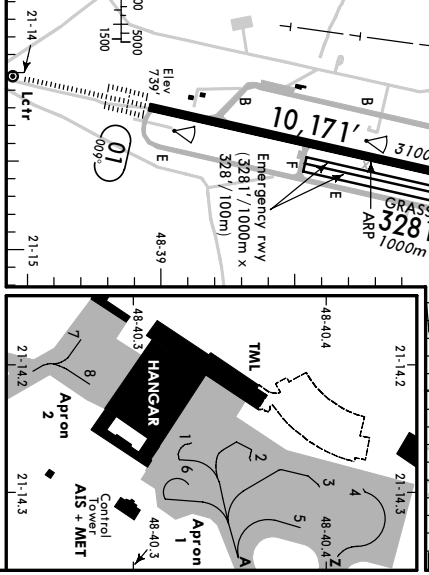
**KOSICE, SLOVAKIA**  
**KOSICE**  
 N48 39.8 E021 14.5

KOSICE Tower 120.4  
 KOSICE Approach/Radar 119.85  
 contact immediately after take-off



**PARKING POSITIONS COORDINATES**

STAND 1, 2	N48 40.3 E021 14.3
3 thru 5	N48 40.4 E021 14.3
6	N48 40.3 E021 14.3
7, 8	N48 40.3 E021 14.2



**ADDITIONAL RUNWAY INFORMATION**  
 — LANDING BEYOND —  
 Threshold 9252' 2920m  
 Glide Slope 148°  
 TAKE-OFF WIDTH 197'

**RWY**

01	HIRL <b>1</b> CL <b>2</b> HIALS TDZ SFL REIL PAPI-L <b>3</b> RVR	188'	45m
19	HIRL <b>60m</b> CL <b>30m</b> MIALS PAPI-L <b>3.0°</b> RVR	197'	60m
01	Grass runway		

**START-UP PROCEDURE**

Pilots of departing aircraft shall request start up clearance when they are ready to start engines immediately and aircraft doors are closed.

**JAR OPS**

<b>Take-Off</b>	<b>All Rwys</b>
<b>Rwy 19</b>	<b>LVP must be in Force</b>
LVP must be in Force	
RCM (DAY only) or RL (DAY only)	
NIL (DAY only)	

<b>A</b> RVR 150m VIS 200m	RVR 250m VIS 300m	400m	800m
<b>B</b> RVR 300m VIS 400m	300m	500m	
<b>C</b> RVR 600m VIS 800m	600m		
<b>D</b> Operators applying U.S. Ops Specs: CL required below 300m.			

**LZKZ**  
**KOSICE**

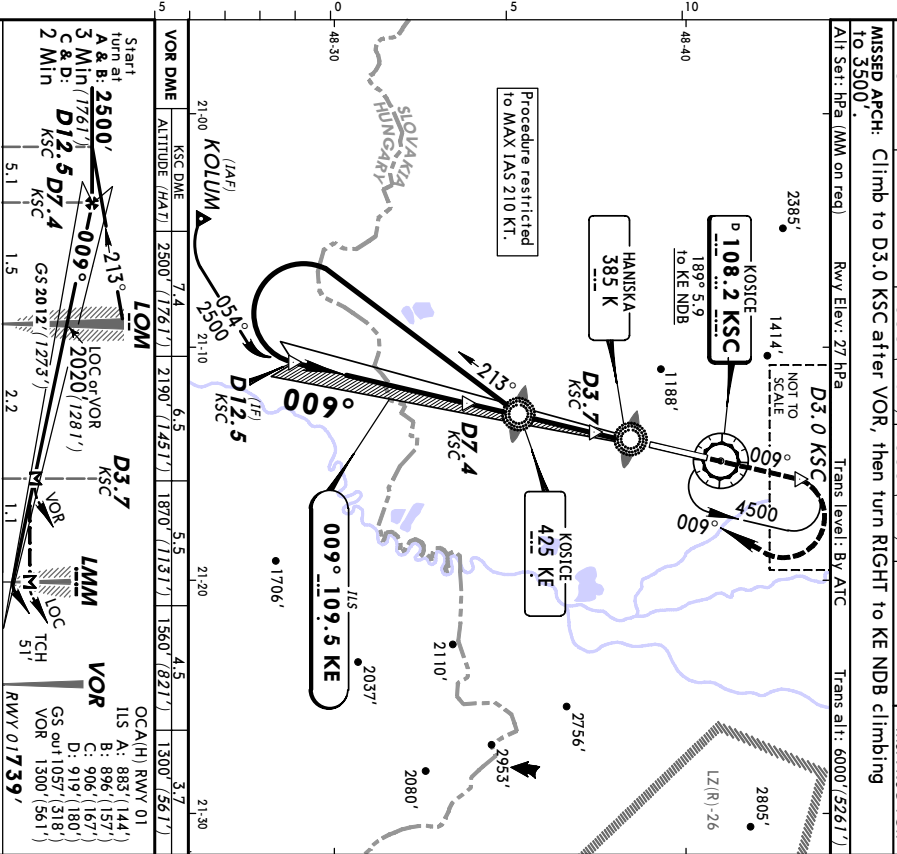
**JEPPESSEN**  
 1 FEB 02 **(11-1)**

**KOSICE, SLOVAKIA**  
**ILS or VOR DME Rwy 01**

LOC	119.85	KOSICE Approach/Radar
KE	120.4	KOSICE Tower
Final	2012' (1273')	ILS
Appch Crs	939' (200')	D(4)(H)
VOR	009°	Minimum Alt
KSC	DZ 4 KSC	MDA(H)
<b>108.2</b>	2500' (1761')	1300' (561')
		VOR
		Rwy 739'

**MISSED APCH:** Climb to D3.0 KSC after VOR, then turn RIGHT to KE NDB climbing to 3500'

Alt Set: Hpa (MM on req) Rwy Elev: 27 Hpa Trans level: By ATC Trans alt: 6000' (3261')



**PANS OPS**

<b>A</b> RVR 550m VIS 700m	RVR 1100m VIS 1500m	RVR 1000m VIS 1100m	RVR 1500m VIS 1200m	RVR 1000m VIS 1100m	RVR 1500m VIS 1200m	RVR 2000m VIS 1500m	RVR 2000m VIS 1500m	RVR 2000m VIS 1500m	RVR 2000m VIS 1500m
<b>B</b> RVR 600m VIS 700m	RVR 1100m VIS 1500m	RVR 1100m VIS 1200m	RVR 1500m VIS 1200m	RVR 1000m VIS 1100m	RVR 1500m VIS 1200m	RVR 2000m VIS 1500m	RVR 2000m VIS 1500m	RVR 2000m VIS 1500m	RVR 2000m VIS 1500m
<b>C</b> RVR 550m VIS 700m	RVR 650m VIS 800m	RVR 1200m VIS 1500m	RVR 1200m VIS 1500m	RVR 1800m VIS 1500m	RVR 1800m VIS 1500m	RVR 2000m VIS 1500m	RVR 2000m VIS 1500m	RVR 2000m VIS 1500m	RVR 2000m VIS 1500m
<b>D</b> RVR 600m VIS 700m	RVR 700m VIS 800m	RVR 1200m VIS 1500m	RVR 1200m VIS 1500m	RVR 1400m VIS 1200m	RVR 1400m VIS 1200m	RVR 2000m VIS 1500m	RVR 2000m VIS 1500m	RVR 2000m VIS 1500m	RVR 2000m VIS 1500m

**JAR OPS**

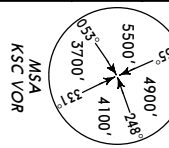
<b>Full</b>	<b>ILS</b>	<b>VOR DME</b>
DA(H) 939' (200')	MDA(H) 1300' (561')	MDA(H) 1300' (561')
CL out <b>1</b>	ALS out <b>2</b>	ALS out <b>2</b>
RVR 600m VIS 700m	RVR 1000m VIS 1500m	RVR 1000m VIS 1500m
RVR 550m VIS 700m	RVR 1100m VIS 1500m	RVR 1100m VIS 1500m
RVR 650m VIS 800m	RVR 1200m VIS 1500m	RVR 1200m VIS 1500m
RVR 700m VIS 800m	RVR 1300m VIS 1500m	RVR 1300m VIS 1500m
RVR 750m VIS 800m	RVR 1400m VIS 1500m	RVR 1400m VIS 1500m
RVR 800m VIS 800m	RVR 1500m VIS 1500m	RVR 1500m VIS 1500m
RVR 850m VIS 800m	RVR 1600m VIS 1500m	RVR 1600m VIS 1500m
RVR 900m VIS 800m	RVR 1700m VIS 1500m	RVR 1700m VIS 1500m
RVR 950m VIS 800m	RVR 1800m VIS 1500m	RVR 1800m VIS 1500m
RVR 1000m VIS 800m	RVR 1900m VIS 1500m	RVR 1900m VIS 1500m
RVR 1050m VIS 800m	RVR 2000m VIS 1500m	RVR 2000m VIS 1500m
RVR 1100m VIS 800m	RVR 2100m VIS 1500m	RVR 2100m VIS 1500m
RVR 1150m VIS 800m	RVR 2200m VIS 1500m	RVR 2200m VIS 1500m
RVR 1200m VIS 800m	RVR 2300m VIS 1500m	RVR 2300m VIS 1500m
RVR 1250m VIS 800m	RVR 2400m VIS 1500m	RVR 2400m VIS 1500m
RVR 1300m VIS 800m	RVR 2500m VIS 1500m	RVR 2500m VIS 1500m
RVR 1350m VIS 800m	RVR 2600m VIS 1500m	RVR 2600m VIS 1500m
RVR 1400m VIS 800m	RVR 2700m VIS 1500m	RVR 2700m VIS 1500m
RVR 1450m VIS 800m	RVR 2800m VIS 1500m	RVR 2800m VIS 1500m
RVR 1500m VIS 800m	RVR 2900m VIS 1500m	RVR 2900m VIS 1500m
RVR 1550m VIS 800m	RVR 3000m VIS 1500m	RVR 3000m VIS 1500m
RVR 1600m VIS 800m	RVR 3100m VIS 1500m	RVR 3100m VIS 1500m
RVR 1650m VIS 800m	RVR 3200m VIS 1500m	RVR 3200m VIS 1500m
RVR 1700m VIS 800m	RVR 3300m VIS 1500m	RVR 3300m VIS 1500m
RVR 1750m VIS 800m	RVR 3400m VIS 1500m	RVR 3400m VIS 1500m
RVR 1800m VIS 800m	RVR 3500m VIS 1500m	RVR 3500m VIS 1500m
RVR 1850m VIS 800m	RVR 3600m VIS 1500m	RVR 3600m VIS 1500m
RVR 1900m VIS 800m	RVR 3700m VIS 1500m	RVR 3700m VIS 1500m
RVR 1950m VIS 800m	RVR 3800m VIS 1500m	RVR 3800m VIS 1500m
RVR 2000m VIS 800m	RVR 3900m VIS 1500m	RVR 3900m VIS 1500m
RVR 2050m VIS 800m	RVR 4000m VIS 1500m	RVR 4000m VIS 1500m
RVR 2100m VIS 800m	RVR 4100m VIS 1500m	RVR 4100m VIS 1500m
RVR 2150m VIS 800m	RVR 4200m VIS 1500m	RVR 4200m VIS 1500m
RVR 2200m VIS 800m	RVR 4300m VIS 1500m	RVR 4300m VIS 1500m
RVR 2250m VIS 800m	RVR 4400m VIS 1500m	RVR 4400m VIS 1500m
RVR 2300m VIS 800m	RVR 4500m VIS 1500m	RVR 4500m VIS 1500m
RVR 2350m VIS 800m	RVR 4600m VIS 1500m	RVR 4600m VIS 1500m
RVR 2400m VIS 800m	RVR 4700m VIS 1500m	RVR 4700m VIS 1500m
RVR 2450m VIS 800m	RVR 4800m VIS 1500m	RVR 4800m VIS 1500m
RVR 2500m VIS 800m	RVR 4900m VIS 1500m	RVR 4900m VIS 1500m
RVR 2550m VIS 800m	RVR 5000m VIS 1500m	RVR 5000m VIS 1500m

**LZZZ** **KOSICE, SLOVAKIA**  
**KOSICE** **CAT II ILS RWY 01**

1 FEB 02 **(11-1A)**

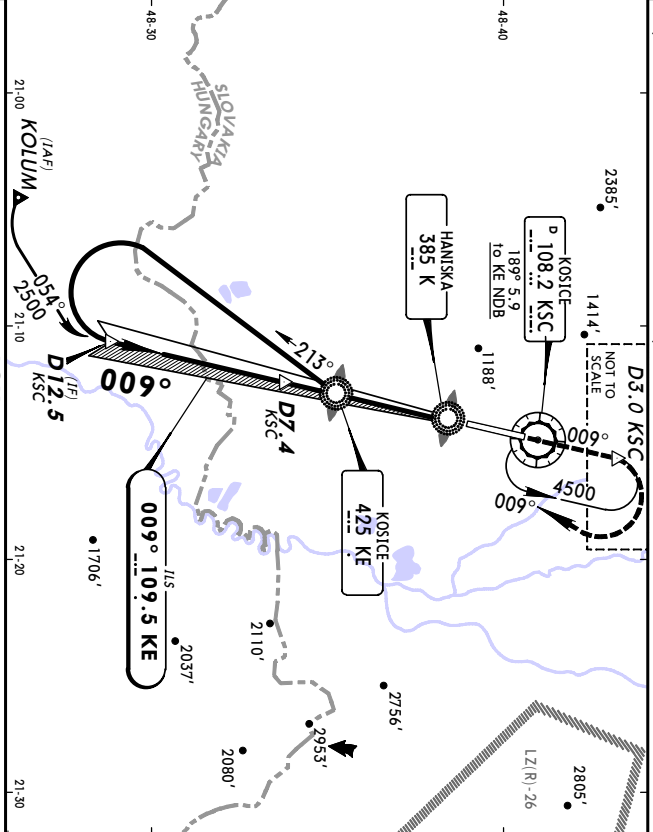
KOSICE Approach/Radar 119.85 KOSICE Tower 120.4

LOC KE	Final Apch Crs	GS LOM	CAT II ILS RA 105' DA/H	Appt Elev 755'	RWY 739'
109.5	009°	2012' (1273')	839' (100')		



**MISSED APCH:** Climb to D3.0 KSC after VOR, then turn RIGHT to KE NDB climbing to 3500'.

All Set: Hpa (MM on req) Rwy Elev: 27 Hpa Trans level: By ATC  
 1. Special Aircrew & Aircraft Certification Required. 2. Procedure restricted to MAX IAS 210 KT.



Start turn at	2500'	213°	LOM	21-00	21-30		
A & B: (7761')	D12.5	009°	LMM	21-00	21-30		
C & D: 2 Min	D7.4	GS2012' (1273')	TCN 51'	21-00	21-30		
Grnd speed-Kts	70	90	100	120	140	160	
GS	3.00°	377	484	538	646	753	861
JAR-OPS STRAIGHT-IN LANDING RWY 01							
CAT II ILS							
RA 105'							
DA(H) 839' (100')							
REL PAPI after VOR							
MIAIS on 108.2							
KSC 425							

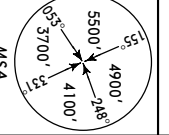
CHANGES: New procedure.

**LZZZ** **KOSICE, SLOVAKIA**  
**KOSICE** **VOR DME RWY 19**

1 FEB 02 **(13-1)**

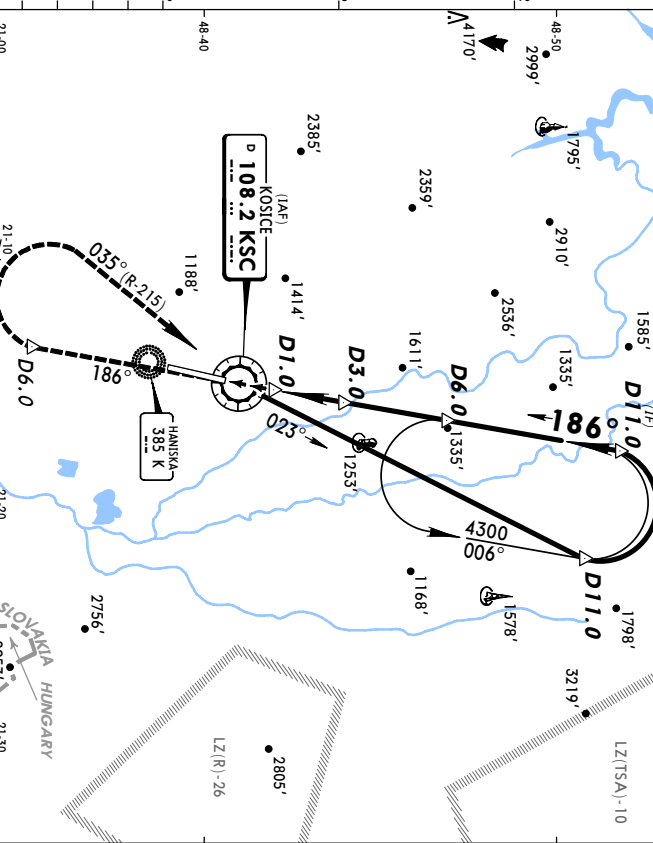
KOSICE Approach/Radar 119.85 KOSICE Tower 120.4

VOR KSC	Final Apch Crs	Minimum Alt	MDA(H)	Appt Elev 755'	RWY 751'
108.2	186°	2700' (1949')	1380' (629')		



**MISSED APCH:** Climb STRAIGHT AHEAD to Intercept R-186. At D6.0 turn RIGHT (MAX IAS 210 KT) to Intercept R-215 inbound. After passing VOR intercept R-023. At D11.0 turn LEFT (MAX IAS 210 KT) to D6.0, climb to 4300' and hold.

All Set: Hpa (MM on req) Rwy Elev: 27 Hpa Trans level: By ATC  
 Procedure restricted to MAX IAS 210 KT.



MAP at D1.0	MDA(H) 1380' (629')	MDA(H) 1380' (625')	VIS 1800m
JAR-OPS STRAIGHT-IN LANDING RWY 19			
CIRCLE-TO-LAND			
RA 105'			
DA(H) 839' (100')			
REL PAPI on 108.2			
MIAIS on 108.2			
KSC 425			

CHANGES: Printing sequence. Minimums.