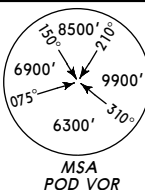
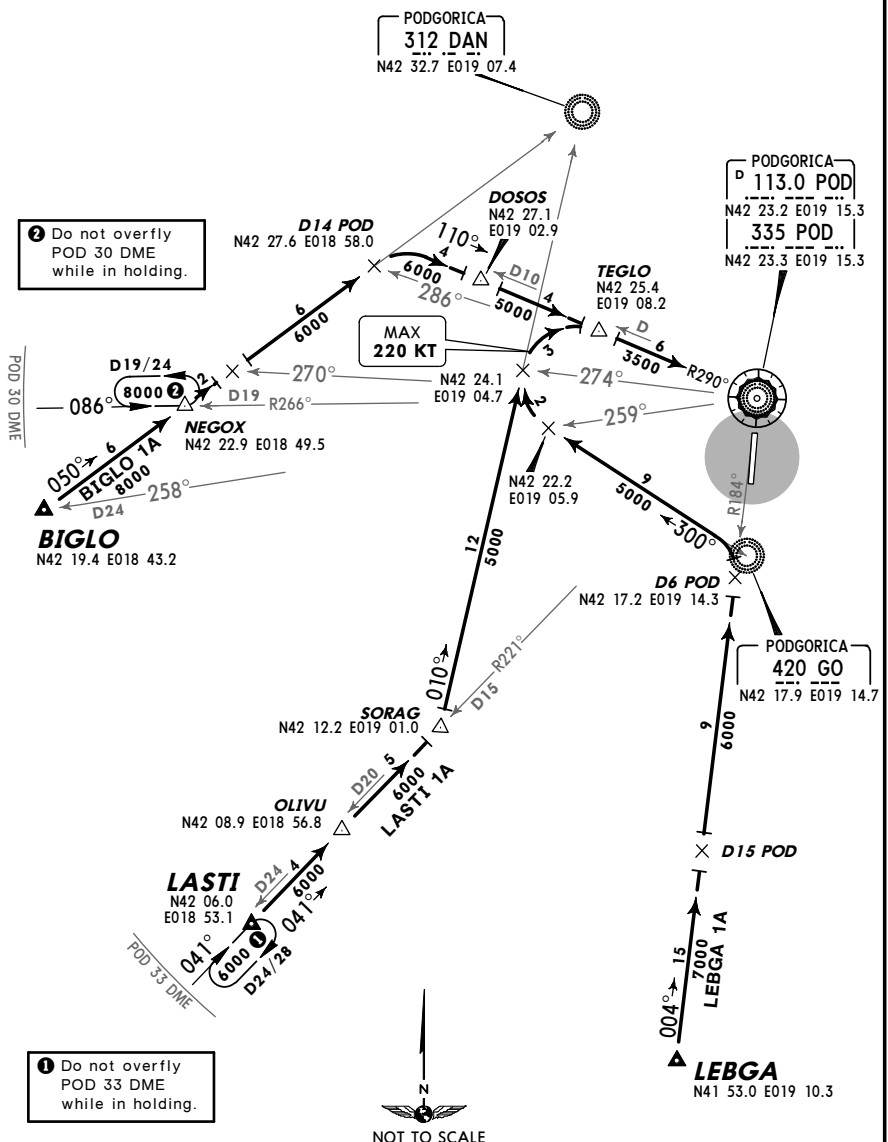


LYPG/TGD
 PODGORICA 25 APR 08 **10-2** Eff 8 May **STAR**
JEPPESEN PODGORICA, SERBIA-MONTENEGRO

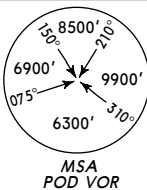


Apt Elev 122'
 Alt Set: hPa Trans level: By ATC Trans alt: 10000'

**BIGLO 1A [BIGLIA], LASTI 1A [LASTIA]
 LEBGA 1A [LEBGA]
 RWY 36 ARRIVALS**
SPEEDS MAX 250 KT BELOW 10000'

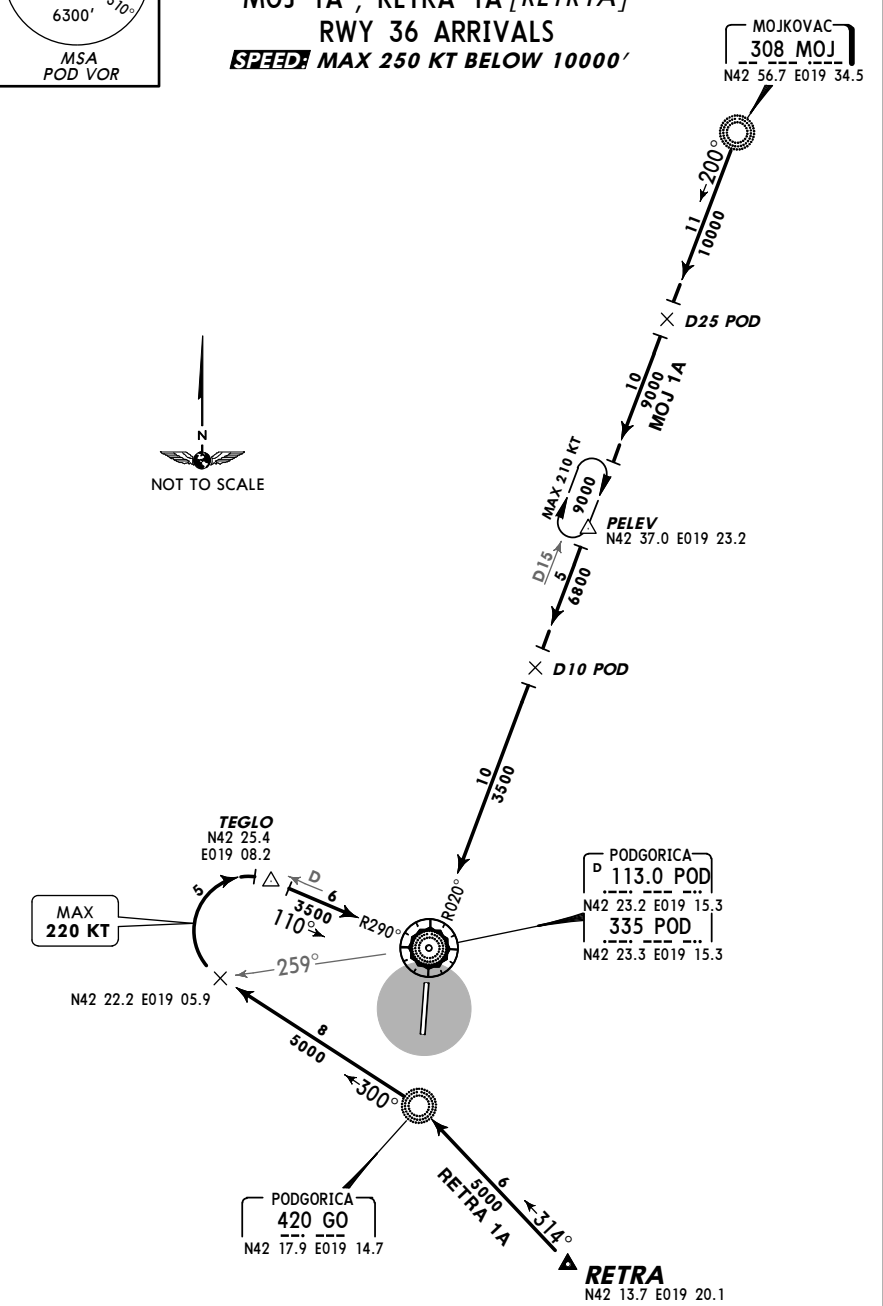


LYPG/TGD
 PODGORICA 25 APR 08 **10-2A** Eff 8 May **STAR**
JEPPESEN PODGORICA, SERBIA-MONTENEGRO



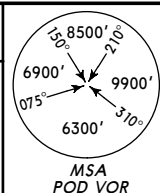
Apt Elev 122'
 Alt Set: hPa Trans level: By ATC Trans alt: 10000'

**MOJ 1A, RETRA 1A [RETRIA]
 RWY 36 ARRIVALS**
SPEEDS MAX 250 KT BELOW 10000'

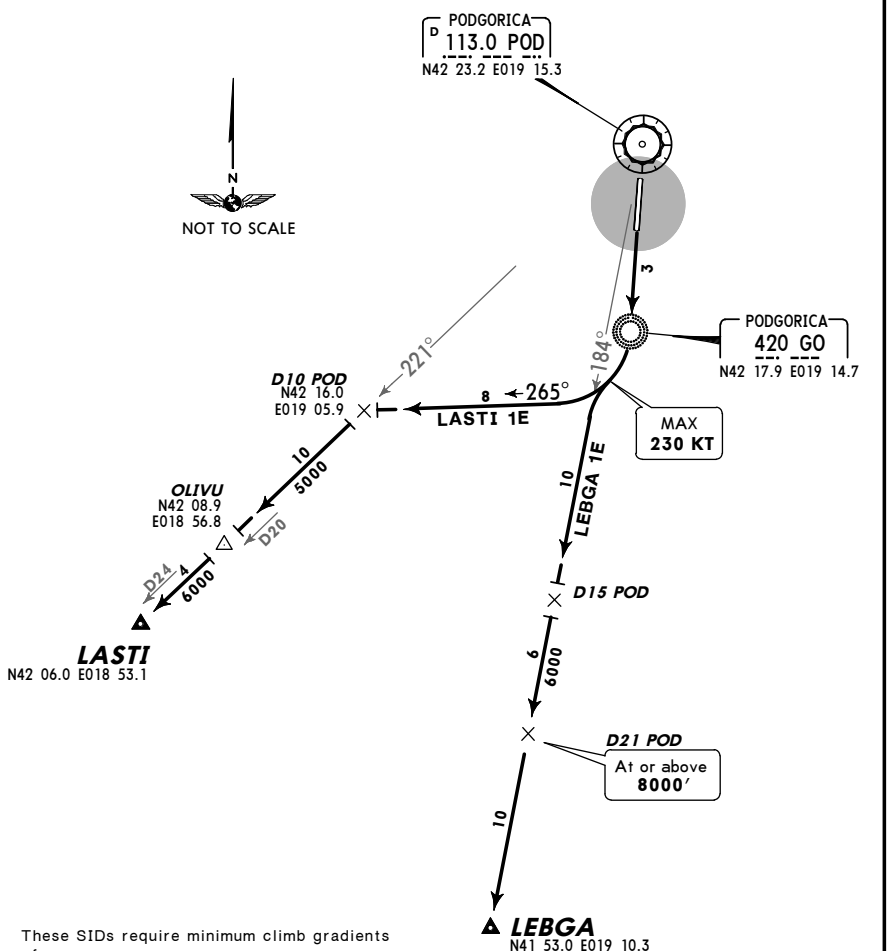


LYPG/TGD **JEPPesen** **PODGORICA, SERBIA-MONTENEGRO**
 PODGORICA 25 APR 08 **10-3** **Eff 8 May** **SID**

Apt Elev 122' Trans level: By ATC Trans alt: 10000'



LASTI ONE ECHO (LASTI 1E) [LAST1E]
LEBGA ONE ECHO (LEBGA 1E) [LEBG1E]
RWY 18 DEPARTURES
~~SPEED~~ MAX 250 KT BELOW 10000'



These SIDs require minimum climb gradients of

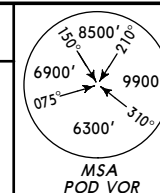
LASTI 1E: 292' per NM (4.8%) up to **3800'**.
LEBGA 1E: 395' per NM (6.5%) up to **6000'**.

Gnd speed-KT	75	100	150	200	250	300
395' per NM	494	658	987	1317	1646	1975
292' per NM	365	486	729	972	1215	1458

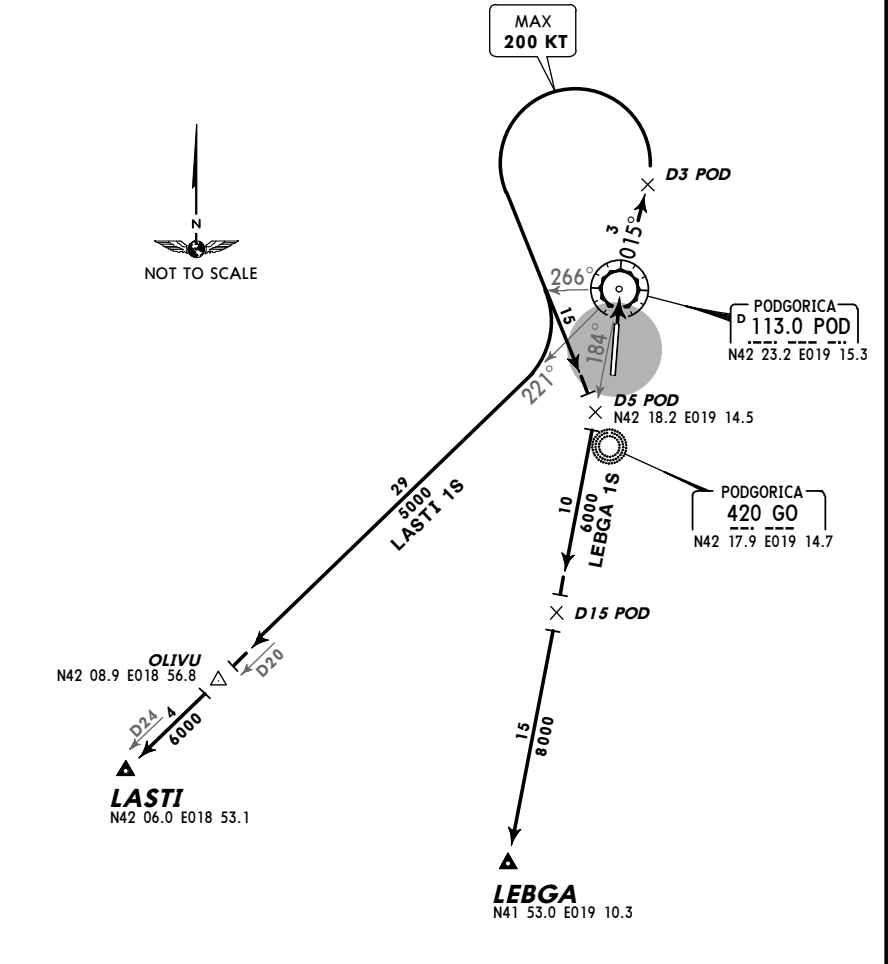
SID	ROUTING
LASTI 1E	Climb straight ahead to GO, turn RIGHT, 265° track to D10 POD, turn LEFT, intercept POD R-221 to LASTI.
LEBGA 1E	Climb straight ahead to GO, turn RIGHT, intercept POD R-184 to LEBGA.

LYPG/TGD **JEPPesen** **PODGORICA, SERBIA-MONTENEGRO**
 PODGORICA 25 APR 08 **10-3A** **Eff 8 May** **SID**

Apt Elev 122' Trans level: By ATC Trans alt: 10000'



LASTI ONE SIERRA (LASTI 1S) [LAST1S]
LEBGA ONE SIERRA (LEBGA 1S) [LEBG1S]
RWY 36 DEPARTURES
~~SPEED~~ MAX 250 KT BELOW 10000'



These SIDs require a minimum climb gradient of

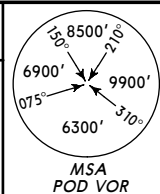
304' per NM (5%) up to **2500'**.

Gnd speed-KT	75	100	150	200	250	300
304' per NM	380	506	760	1013	1266	1519

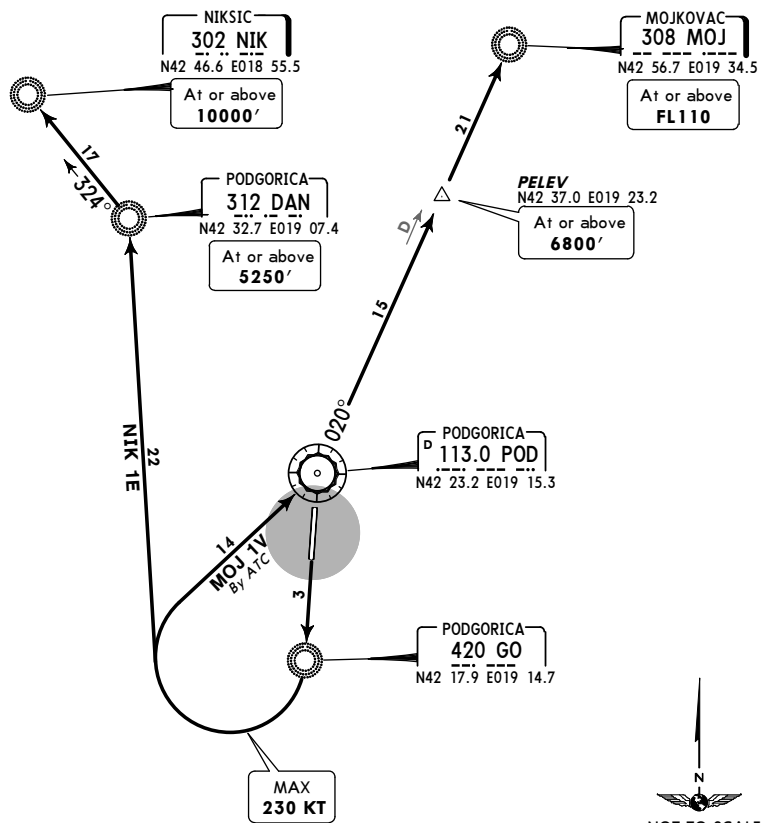
SID	ROUTING
LASTI 1S	Climb straight ahead to POD, POD R-015 to D3 POD, turn LEFT towards GO, at POD R-266 turn RIGHT, intercept POD R-221 to LASTI.
LEBGA 1S	Climb straight ahead to POD, POD R-015 to D3 POD, turn LEFT towards GO, at D5 POD turn RIGHT, intercept POD R-184 to LEBGA.

LYPG/TGD PODGORICA 25 APR 08 **10-3B** Eff 8 May **SID**
JEPPESEN PODGORICA, SERBIA-MONTENEGRO

Apt Elev 122' Trans level: By ATC Trans alt: 10000'



MOJKOVAC ONE VICTOR (MOJ 1V)
NIKSIC ONE ECHO (NIK 1E)
RWY 18 DEPARTURES
SPEED MAX 250 KT BELOW 10000'



These SIDs require a minimum climb gradient of 261' per NM (4.3%) up to 3800'.

Gnd speed-KT	75	100	150	200	250	300
261' per NM	327	435	653	871	1089	1306

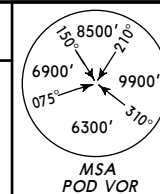
SID	ROUTING
MOJ 1V BY ATC	Climb straight ahead to GO, turn RIGHT to POD, turn LEFT, POD R-020 to MOJ.
NIK 1E	Climb straight ahead to GO, turn RIGHT to DAN, turn LEFT, 324° bearing to NIK.

CHANGES: SIDs redesignated; MOJ SID availability.

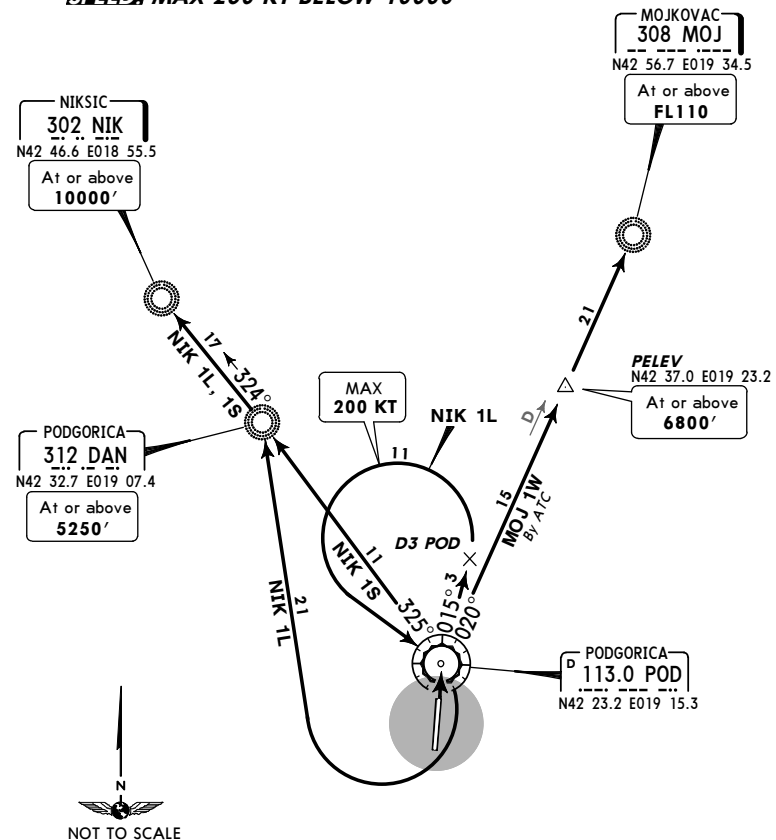
© JEPPESEN, 2004, 2008. ALL RIGHTS RESERVED.

LYPG/TGD PODGORICA 25 APR 08 **10-3C** Eff 8 May **SID**
JEPPESEN PODGORICA, SERBIA-MONTENEGRO

Apt Elev 122' Trans level: By ATC Trans alt: 10000'



MOJKOVAC ONE WHISKEY (MOJ 1W)
NIKSIC ONE LIMA (NIK 1L)
NIKSIC ONE SIERRA (NIK 1S)
RWY 36 DEPARTURES
SPEED MAX 250 KT BELOW 10000'



These SIDs require minimum climb gradients of
MOJ 1W, NIK 1S: 437' per NM (7.2%) up to 6600'.
NIK 1L: 280' per NM (4.6%) up to 2500'.

Gnd speed-KT	75	100	150	200	250	300
437' per NM	547	729	1094	1458	1823	2187
280' per NM	349	466	699	932	1165	1398

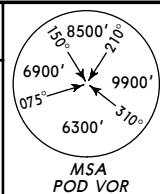
SID	ROUTING
MOJ 1W BY ATC	Climb straight ahead to POD, turn RIGHT, POD R-020 to MOJ.
NIK 1L	Climb straight ahead to POD, POD R-015 to D3 POD, turn LEFT to POD, turn RIGHT to DAN, 324° bearing to NIK.
NIK 1S	Climb straight ahead to POD, turn LEFT, POD R-325 to DAN, 324° bearing to NIK.

CHANGES: SIDs completely revised.

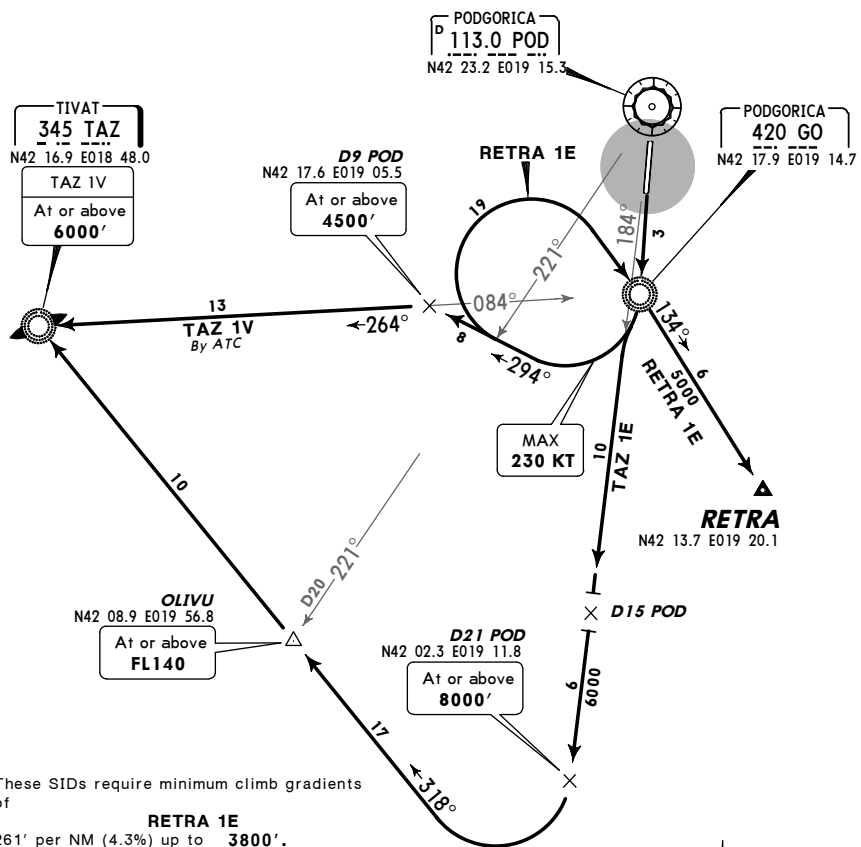
© JEPPESEN, 2004, 2008. ALL RIGHTS RESERVED.

LYPG/TGD **JEPPesen** **PODGORICA, SERBIA-MONTENEGRO**
 PODGORICA 25 APR 08 **10-3D** **Eff 8 May** **SID**

Apt Elev 122' Trans level: By ATC Trans alt: 10000'



RETRA ONE ECHO (RETRA 1E) [RETR1E]
TIVAT ONE ECHO (TAZ 1E)
TIVAT ONE VICTOR (TAZ 1V)
RWY 18 DEPARTURES
~~SPEED~~ MAX 250 KT BELOW 10000'



These SIDs require minimum climb gradients of

- RETRA 1E**
261' per NM (4.3%) up to 3800'.
- TAZ 1E**
395' per NM (6.5%) up to 6000'.
- TAZ 1V**
292' per NM (4.8%) up to 3800'.

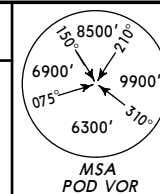
Gnd speed-KT	75	100	150	200	250	300
261' per NM	327	435	653	871	1089	1306
292' per NM	365	486	729	972	1215	1458
395' per NM	494	658	987	1317	1646	1975



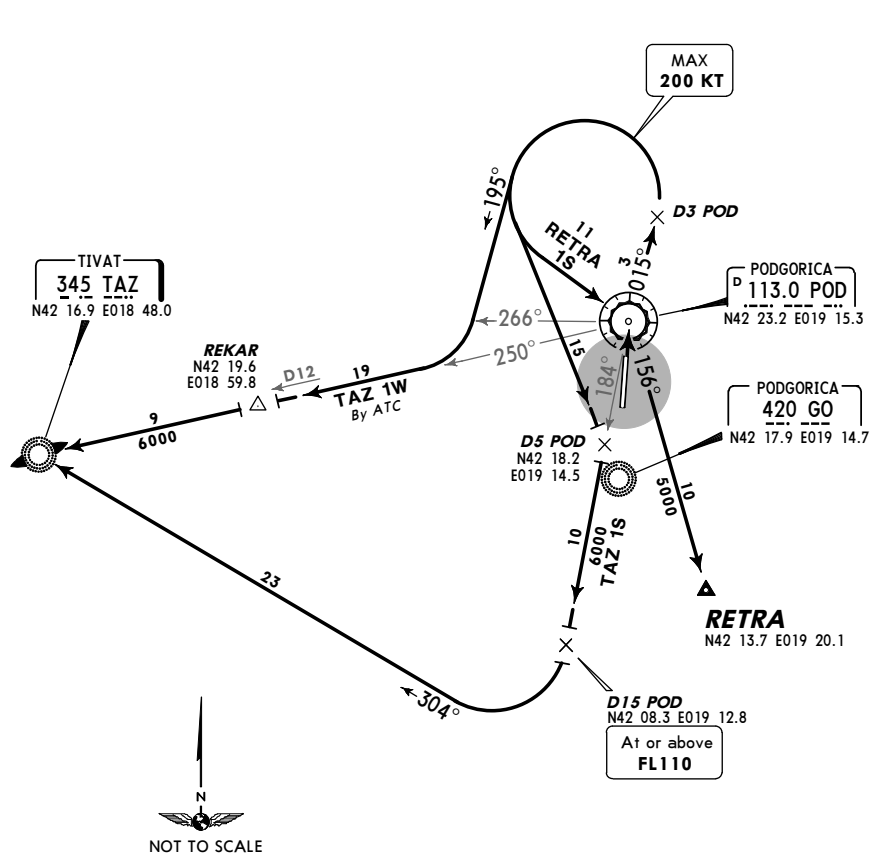
SID	ROUTING
RETRA 1E	Climb straight ahead to GO, turn RIGHT, 294° track, at POD R-221 turn RIGHT to GO, 134° bearing to RETRA.
TAZ 1E	Climb straight ahead to GO, turn RIGHT, intercept POD R-184 to D21 POD, turn RIGHT, intercept 318° bearing to TAZ.
TAZ 1V BY ATC	Climb straight ahead to GO, turn RIGHT, 294° track to D9 POD, turn LEFT, intercept 264° bearing from GO to TAZ.

LYPG/TGD **JEPPesen** **PODGORICA, SERBIA-MONTENEGRO**
 PODGORICA 25 APR 08 **10-3E** **Eff 8 May** **SID**

Apt Elev 122' Trans level: By ATC Trans alt: 10000'



RETRA ONE SIERRA (RETRA 1S) [RETR1S]
TIVAT ONE SIERRA (TAZ 1S)
TIVAT ONE WHISKEY (TAZ 1W)
RWY 36 DEPARTURES
~~SPEED~~ MAX 250 KT BELOW 10000'



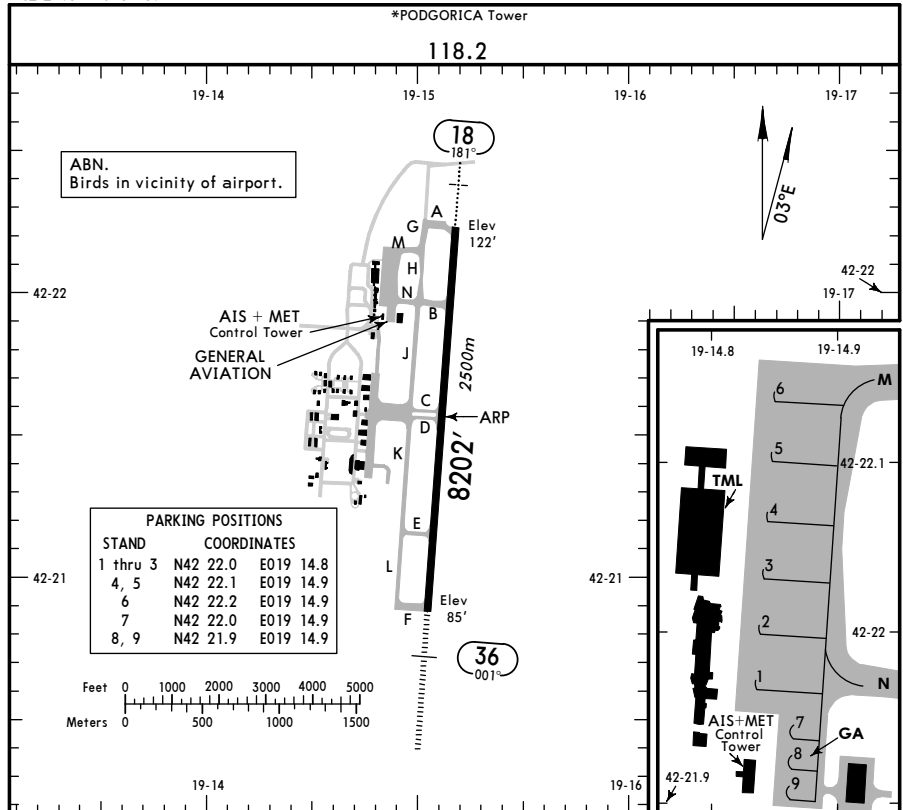
These SIDs require a minimum climb gradient of 304' per NM (5%) up to 2500'.

Gnd speed-KT	75	100	150	200	250	300
304' per NM	380	506	760	1013	1266	1519



SID	ROUTING
RETRA 1S	Climb straight ahead to POD, POD R-015 to D3 POD, turn LEFT to POD, turn RIGHT, POD R-156 to RETRA.
TAZ 1S	Climb straight ahead to POD, POD R-015 to D3 POD, turn LEFT towards GO, at D5 POD turn RIGHT, intercept POD R-184 to D15 POD, turn RIGHT, intercept 304° bearing to TAZ.
TAZ 1W BY ATC	Climb straight ahead to POD, POD R-015 to D3 POD, turn LEFT, 195° track, at POD R-266 turn RIGHT, intercept POD R-250 to TAZ.

LYPG/TGD **JEPPESEN** **PODGORICA, SERBIA-MONTENEGRO**
 Apt Elev **122'** 29 FEB 08 **(10-9)** Eff 13 Mar
 N42 21.6 E019 15.1 **PODGORICA**



ADDITIONAL RUNWAY INFORMATION

RWY	USABLE LENGTHS	LANDING BEYOND		TAKE-OFF	WIDTH
		Threshold	Glide Slope		
18	HIRL (60m) ALS PAPI (3.20°)			1	148'
36	HIRL (60m) HIALS SFL PAPI (3.20°)		7412' 2259m	1	45m

1 TAKE-OFF RUN AVAILABLE

RWY 18:		RWY 36:	
From rwy head	8202' (2500m)	From rwy head	8202' (2500m)
twy B int	6578' (2005m)	twy E int	6585' (2007m)

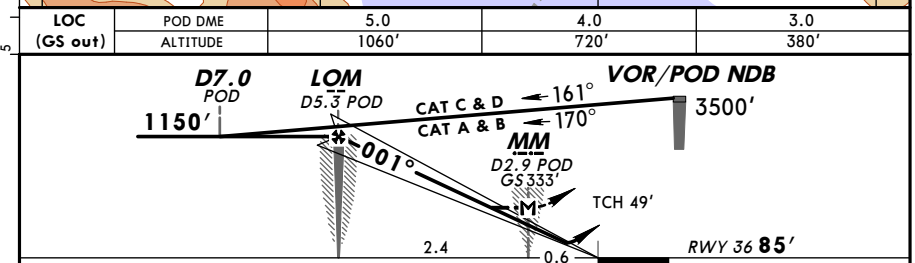
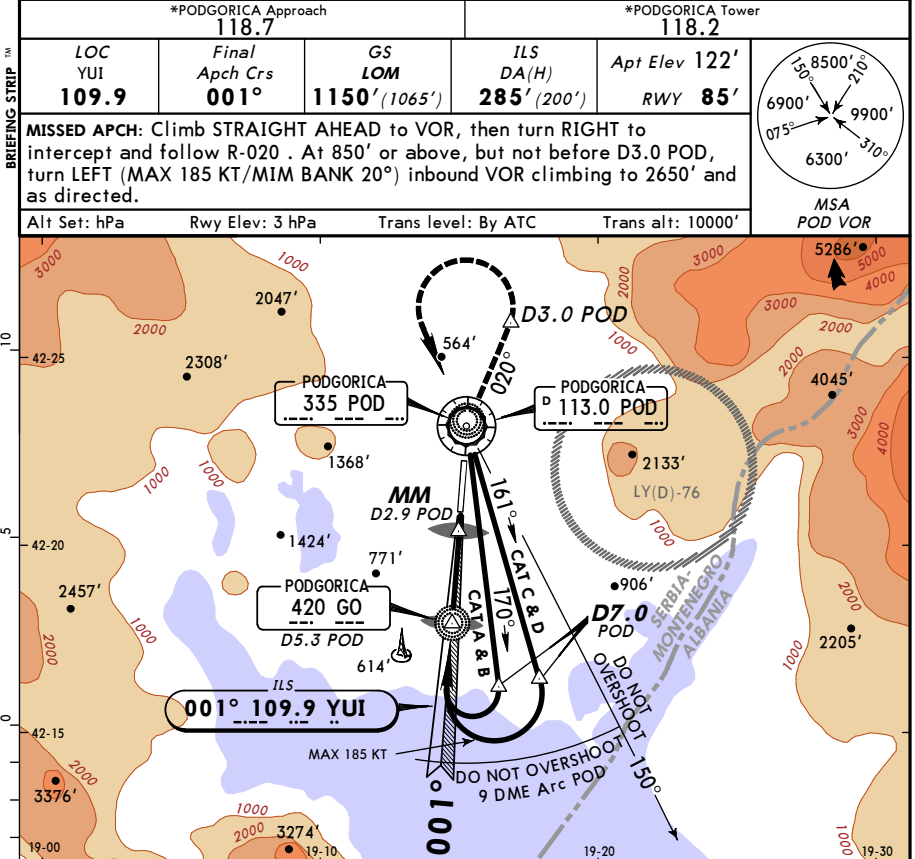
JAR-OPS

TAKE-OFF 1

	All Rwws		
	LVP must be in force	RCLM (DAY only) or RL	NIL (DAY only)
A			
B	250m	400m	500m
C			
D	300m		

1 Operators applying U.S. Ops Specs: CL required below 300m.

LYPG/TGD **JEPPESEN** **PODGORICA, SERBIA-MONTENEGRO**
 Apt Elev **122'** 29 FEB 08 **(11-1)** Eff 13 Mar
 N42 21.6 E019 15.1 **PODGORICA** **ILS Rwy 36**



Gnd speed-Kts	70	90	100	120	140	160	HIALS	POD
ILS GS 3.20° or LOC Descent Gradient 5.6%	401	516	574	688	803	918	PAPI	113.0
MAP at MM/D2.9 POD								

JAR-OPS

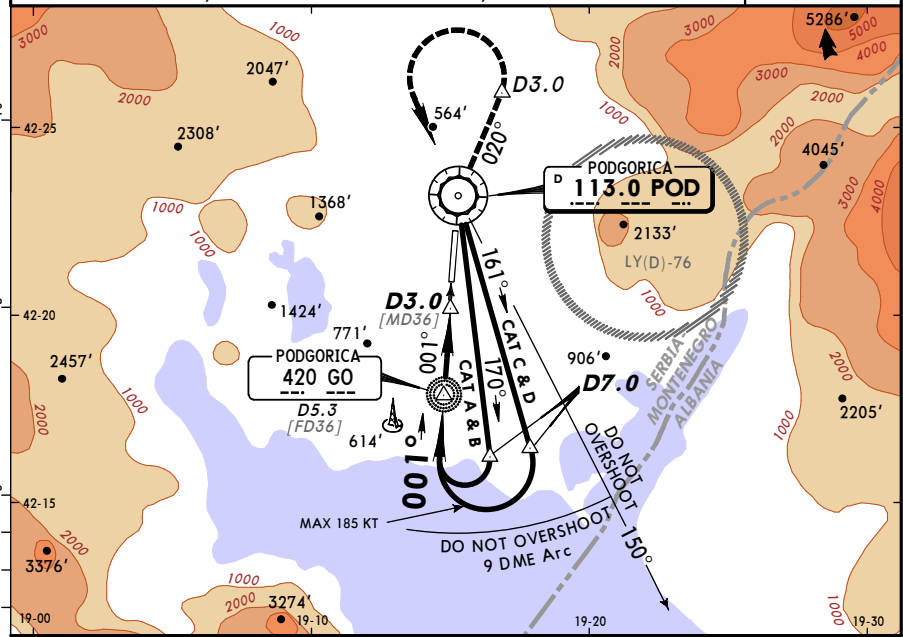
STRAIGHT-IN LANDING RWY 36

CIRCLE-TO-LAND

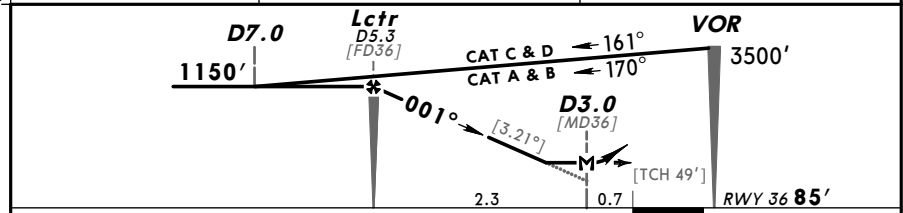
A	ILS		LOC (GS out)		Circle-to-land procedure with prescribed flight tracks see 19-10.
	DA(H) 285' (200')	FULL	ALS out	ALS out	
B			800m	1600m	
C	800m	1200m			
D			1200m		

LYPG/TGD
PODGORICA **JEPPESEN** **PODGORICA, SERBIA-MONTENEGRO**
 29 FEB 08 (13-1) Eff 13 Mar **VOR DME Rwy 36**

*PODGORICA Approach 118.7				*PODGORICA Tower 118.2	
VOR POD 113.0	Final Apch Crs 001°	Minimum Alt Lctr 1150' (1065')	MDA(H) 480' (395')	Apt Elev 122'	Rwy 85'
MISSED APCH: Climb STRAIGHT AHEAD to VOR, then turn RIGHT to intercept and follow R-020. At 1150' or above, but not before D3.0, turn LEFT (MAX 185 KT/MIM BANK 20°) inbound VOR climbing to 2650' and as directed.					
Alt Set: hPa		Rwy Elev: 3 hPa		Trans level: By ATC	
		Trans alt: 10000'		MSA POD VOR	



POD DME	5.0	4.0
ALTITUDE	1060'	720'

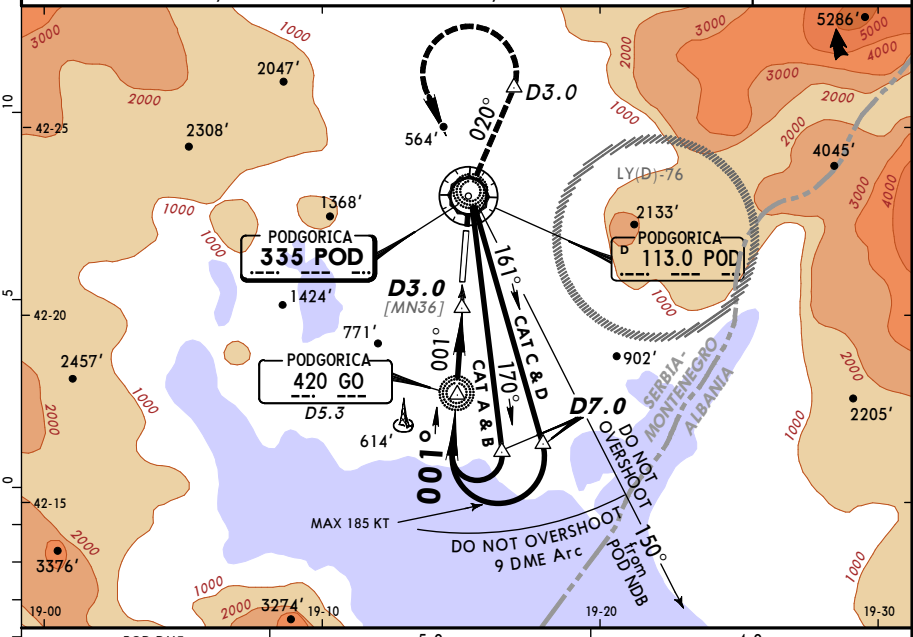


Gnd speed-Kts	70	90	100	120	140	160	HIALS PAPI PAPI	POD 113.0	
Descent gradient	5.61% or								[3.21°]
Descent angle	398	511	568	682	795	909			
MAP at D3.0									

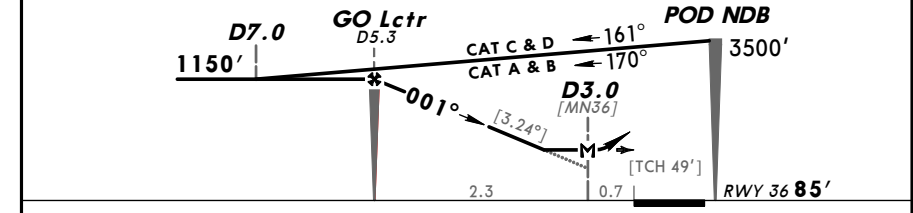
JAR-OPS STRAIGHT-IN LANDING RWY 36		CIRCLE-TO-LAND	
MDA(H) 480' (395')		ALS out	
A	1600m	2400m	For Circle-to-land procedure with prescribed flight tracks see 19-10.
B	2000m	2800m	
C	2400m	3200m	
D	2400m	3200m	

LYPG/TGD
PODGORICA **JEPPESEN** **PODGORICA, SERBIA-MONTENEGRO**
 2 MAY 08 (16-1) Eff 8 May **NDB DME Rwy 36**

*PODGORICA Approach 118.7				*PODGORICA Tower 118.2	
NDB POD 335	Final Apch Crs 001°	Minimum Alt GO Lctr 1150' (1065')	MDA(H) 500' (415')	Apt Elev 122'	Rwy 85'
MISSED APCH: Climb STRAIGHT AHEAD to POD NDB, then turn RIGHT onto 020° from POD NDB. At 1150' or above, but not before D3.0, turn LEFT (MAX 185 KT/MIM BANK 20°) inbound POD NDB climbing to 2650' and as directed.					
Alt Set: hPa		Rwy Elev: 3 hPa		Trans level: By ATC	
		Trans alt: 10000'		MSA POD NDB	



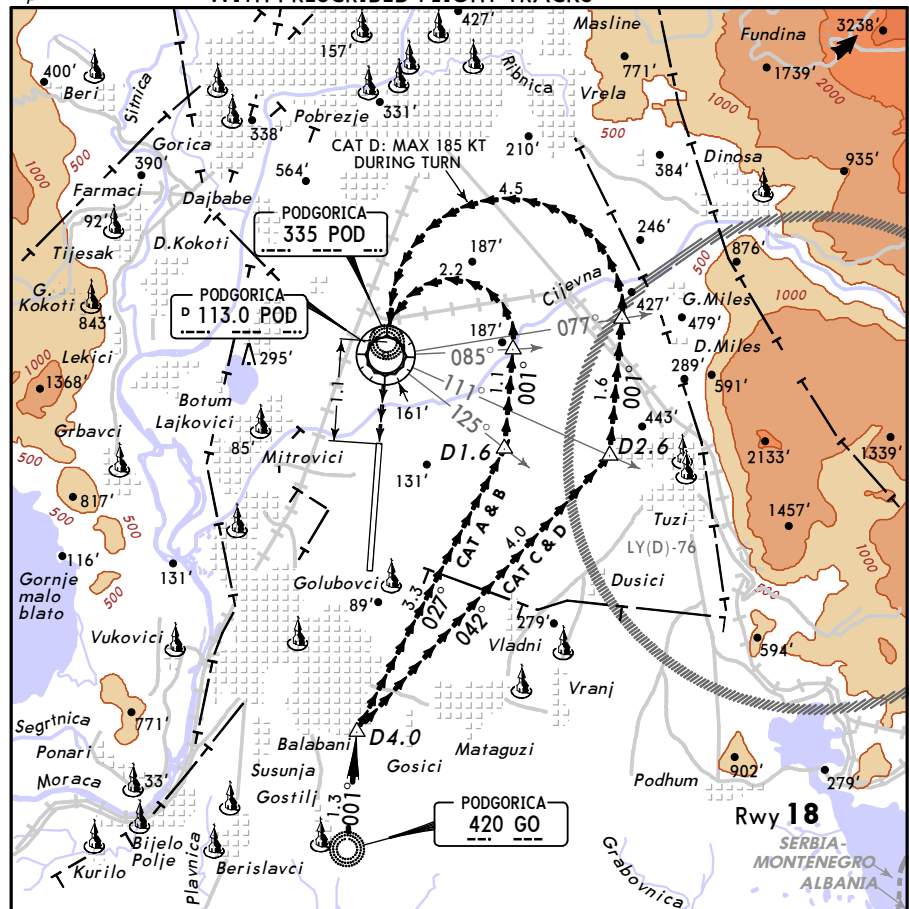
POD DME	5.0	4.0
ALTITUDE	1060'	720'



Gnd speed-Kts	70	90	100	120	140	160	HIALS PAPI PAPI	POD 335	
Descent gradient	5.66% or								[3.24°]
Descent angle	401	516	573	688	803	917			
MAP at D3.0									

JAR-OPS STRAIGHT-IN LANDING RWY 36		CIRCLE-TO-LAND	
MDA(H) 500' (415')		ALS out	
A	1600m	2400m	For Circle-to-land procedure with prescribed flight tracks see 19-10.
B	2000m	2800m	
C	2400m	3200m	
D	2400m	3200m	

LYPG/TGD **JEPPESEN** **2 MAY 08** **19-10** **PODGORICA, SERBIA-MONTENEGRO**
Eff 3 May **CIRCLE-TO-LAND** **PODGORICA**
Apt Elev 122' **WITH PRESCRIBED FLIGHT TRACKS**



MISSED APPROACH:

If visual reference is lost, initial climbing turn towards the landing rwy. Overhead airport proceed climbing to GO Lctr and as directed.

JAR-OPS

	Max Kts	MDA(H)	VIS
A	100	630' (508')	2400m
B	135	990' (868')	4800m
C	180	990' (868')	5200m
D	185	990' (868')	

PANS OPS 3