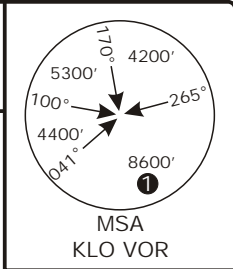


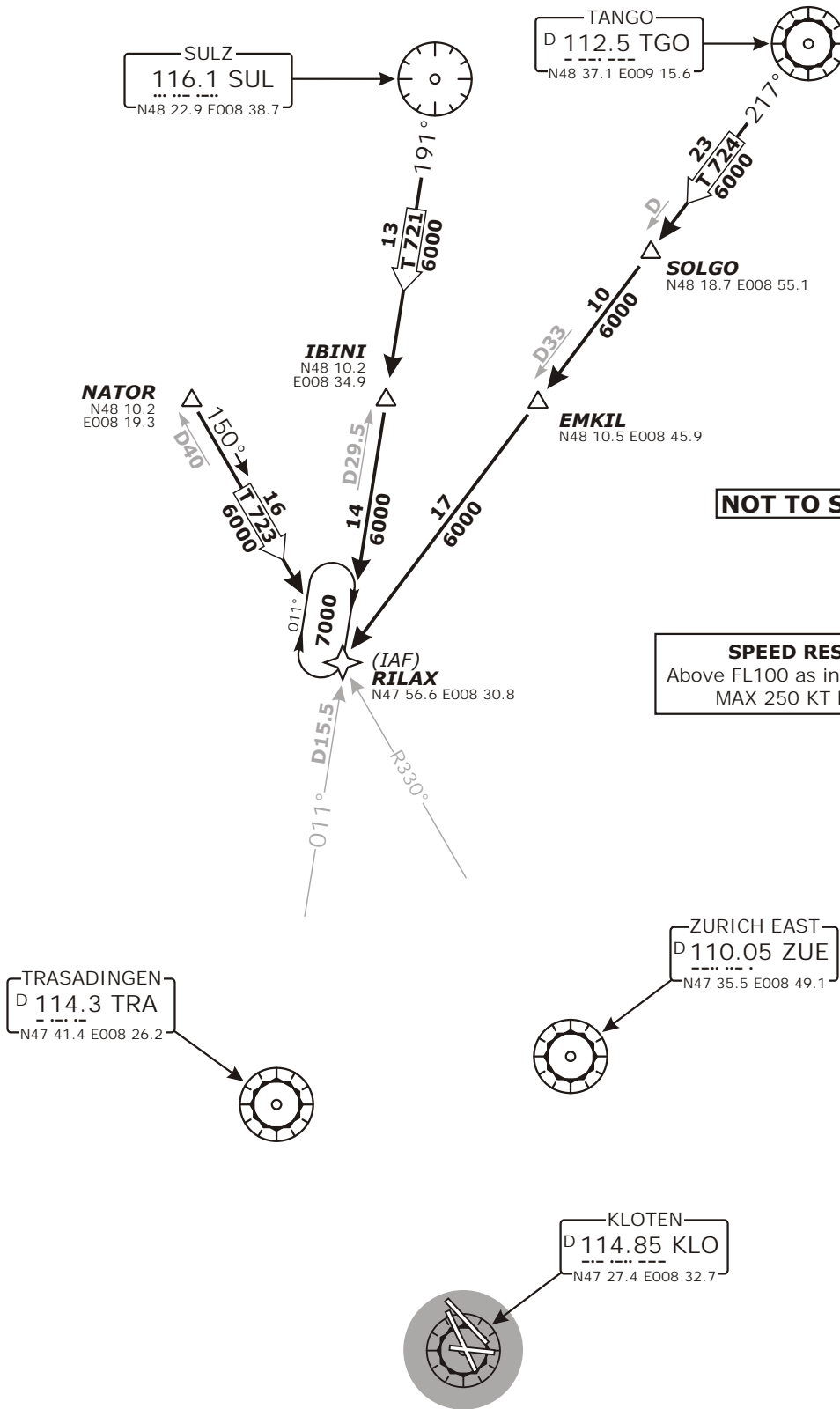
Valid for flight simulation use only - do not use for real life navigation

Swiss Radar LSAS_CTR 128.05	ZURICH Arrival LSZH_APP 120.75	ZURICH Final LSZH_F_APP 125.35	Apt Elev 1416'	Alt Set: hPa (IN on request) Trans level: by ATC Trans alt: 7000'
-----------------------------------	--------------------------------------	--------------------------------------	--------------------------	---



RNAV TRANSITIONS

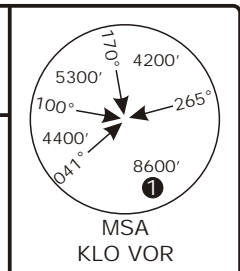
TO RILAX HOLDING
FOR CONTINUATION AFTER RILAX REFER TO CHART NO.3



CHANGES: Transition to TRA transferred.

Valid for flight simulation use only - do not use for real life navigation

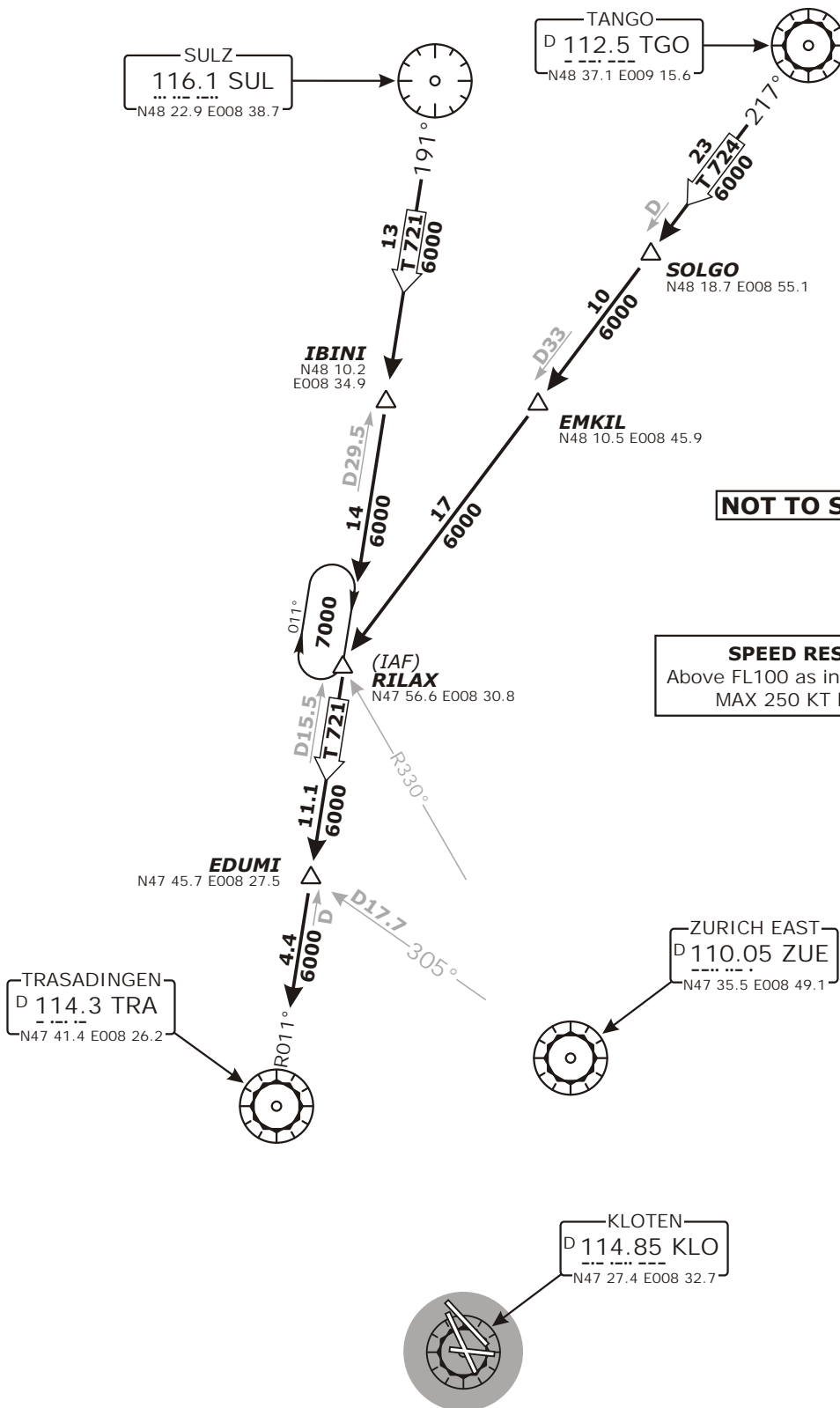
Swiss Radar LSAS_CTR 128.05	ZURICH Arrival LSZH_APP 120.75	ZURICH Final LSZH_F_APP 125.35	Apt Elev 1416'	Alt Set: hPa (IN on request) Trans level: by ATC Trans alt: 7000'
-----------------------------------	--------------------------------------	--------------------------------------	--------------------------	---



NON-RNAV TRANSITIONS

TO TRA

FOR CONTINUATION AFTER TRA REFER TO CHART NO.3



NOT TO SCALE

SPEED RESTRICTION
Above FL100 as instructed by Radar.
MAX 250 KT below FL100.

Valid for flight simulation use only - do not use for real life navigation

CHANGES: editorial.

http://www.vacc-sag.org/

© Jürg Gaensli <swiss-charts@gmx.ch>

http://www.swissflr.org/

LSZH/ZRH ZURICH

STAR CHART NO. 3
Revision 13 FEB 08

RNAV and NON-RNAV STAR
ZURICH, SWITZERLAND

Swiss Radar
LSAS_CTR
128.05

ZURICH Arrival
LSZH_APP
120.75

ZURICH Final
LSZH_F_APP
125.35

Apt Elev
1416'

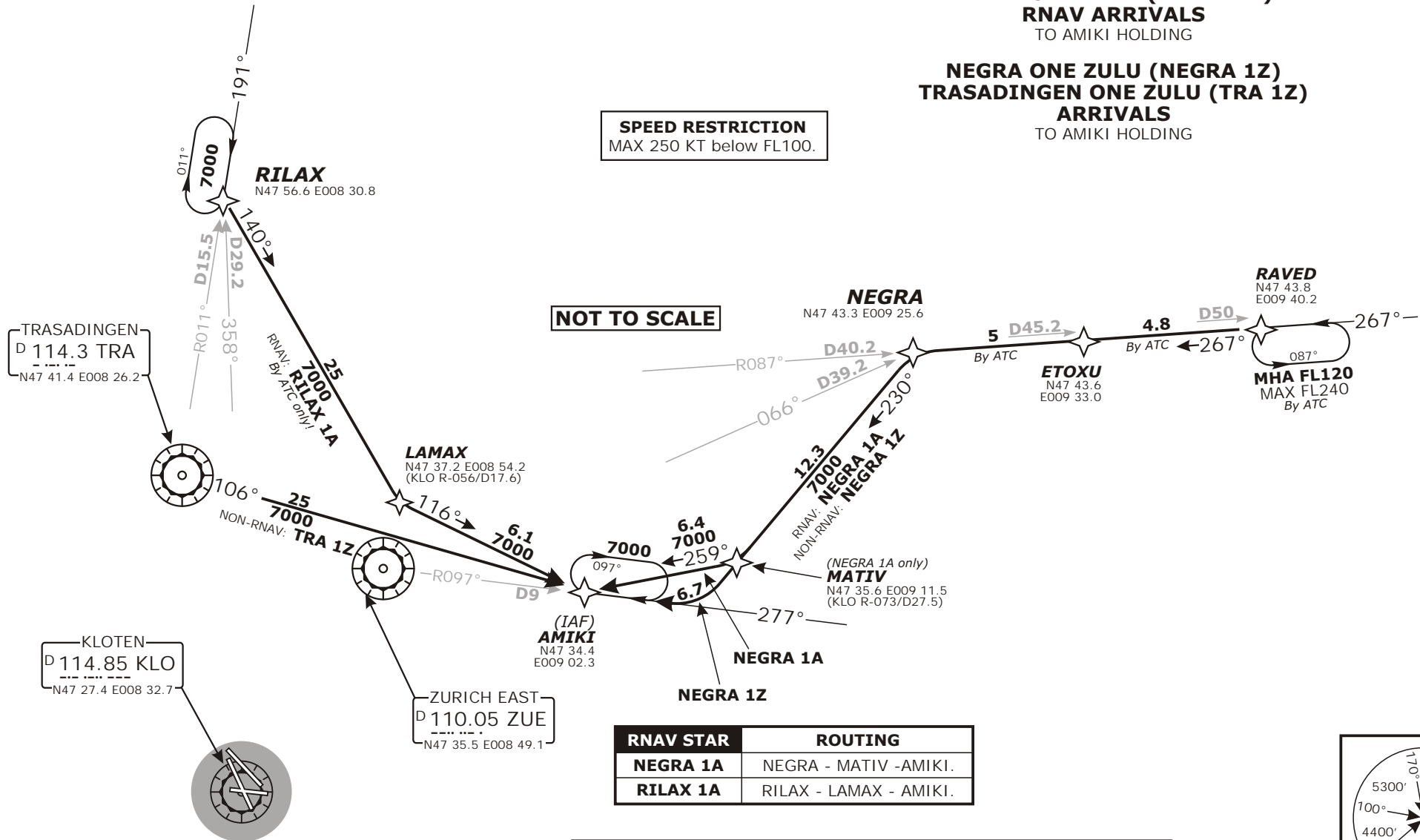
Alt Set: hPa (IN on request)
Trans level: by ATC
Trans alt: 7000'

**NEGRA ONE ALFA (NEGRA 1A)
RILAX ONE ALFA (RILAX 1A)
RNAV ARRIVALS**
TO AMIKI HOLDING

**NEGRA ONE ZULU (NEGRA 1Z)
TRASADINGEN ONE ZULU (TRA 1Z)
ARRIVALS**
TO AMIKI HOLDING

SPEED RESTRICTION
MAX 250 KT below FL100.

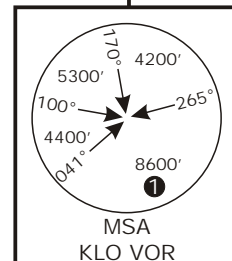
NOT TO SCALE



RNAV STAR	ROUTING
NEGRA 1A	NEGRA - MATIV - AMIKI.
RILAX 1A	RILAX - LAMAX - AMIKI.

NON-RNAV STAR	ROUTING
NEGRA 1Z	230° track, intercept ZUE R-097 inbound to AMIKI.
TRA 1Z	TRA R-106 to AMIKI.

① 5900' within 17 DME



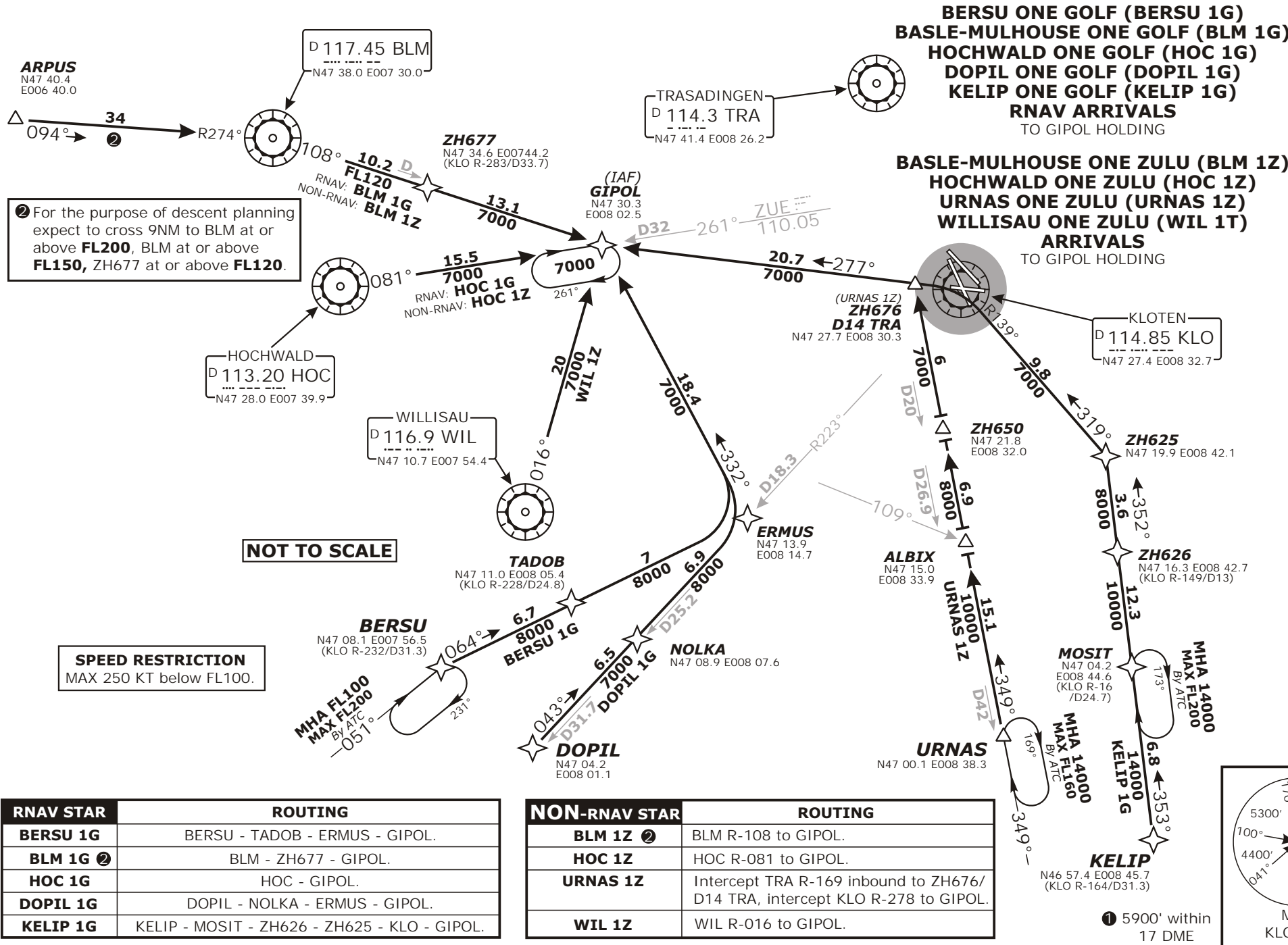
Valid for flight simulation use only - do not use for real life navigation

CHANGES: Editorial.

http://www.vacc-sag.org/

© Jung Gaenstli <swiss-charts@gmx.ch>

http://www.swissair.org/



② For the purpose of descent planning expect to cross 9NM to BLM at or above **FL200**, BLM at or above **FL150**, ZH677 at or above **FL120**.

NOT TO SCALE

SPEED RESTRICTION
MAX 250 KT below FL100.

RNAV STAR	ROUTING
BERSU 1G	BERSU - TADOB - ERMUS - GIPOL.
BLM 1G ②	BLM - ZH677 - GIPOL.
HOC 1G	HOC - GIPOL.
DOPIL 1G	DOPIL - NOLKA - ERMUS - GIPOL.
KELIP 1G	KELIP - MOSIT - ZH626 - ZH625 - KLO - GIPOL.

NON-RNAV STAR	ROUTING
BLM 1Z ②	BLM R-108 to GIPOL.
HOC 1Z	HOC R-081 to GIPOL.
URNAS 1Z	Intercept TRA R-169 inbound to ZH676/D14 TRA, intercept KLO R-278 to GIPOL.
WIL 1Z	WIL R-016 to GIPOL.

Swiss Radar LSAS CTR 128.05	ZURICH Arrival LSZH APP 120.75	ZURICH Final LSZH F APP 125.35	Apt Elev 1416'	Alt Set: hPa (IN on request) Trans level: by ATC Trans alt: 7000'
-----------------------------------	--------------------------------------	--------------------------------------	--------------------------	---

LSZH/ZRH ZURICH
STAR CHART NO. 4
Revision 13 FEB 08
ZURICH, SWITZERLAND
RNAV and NON-RNAV STAR

① 5900' within 17 DME

