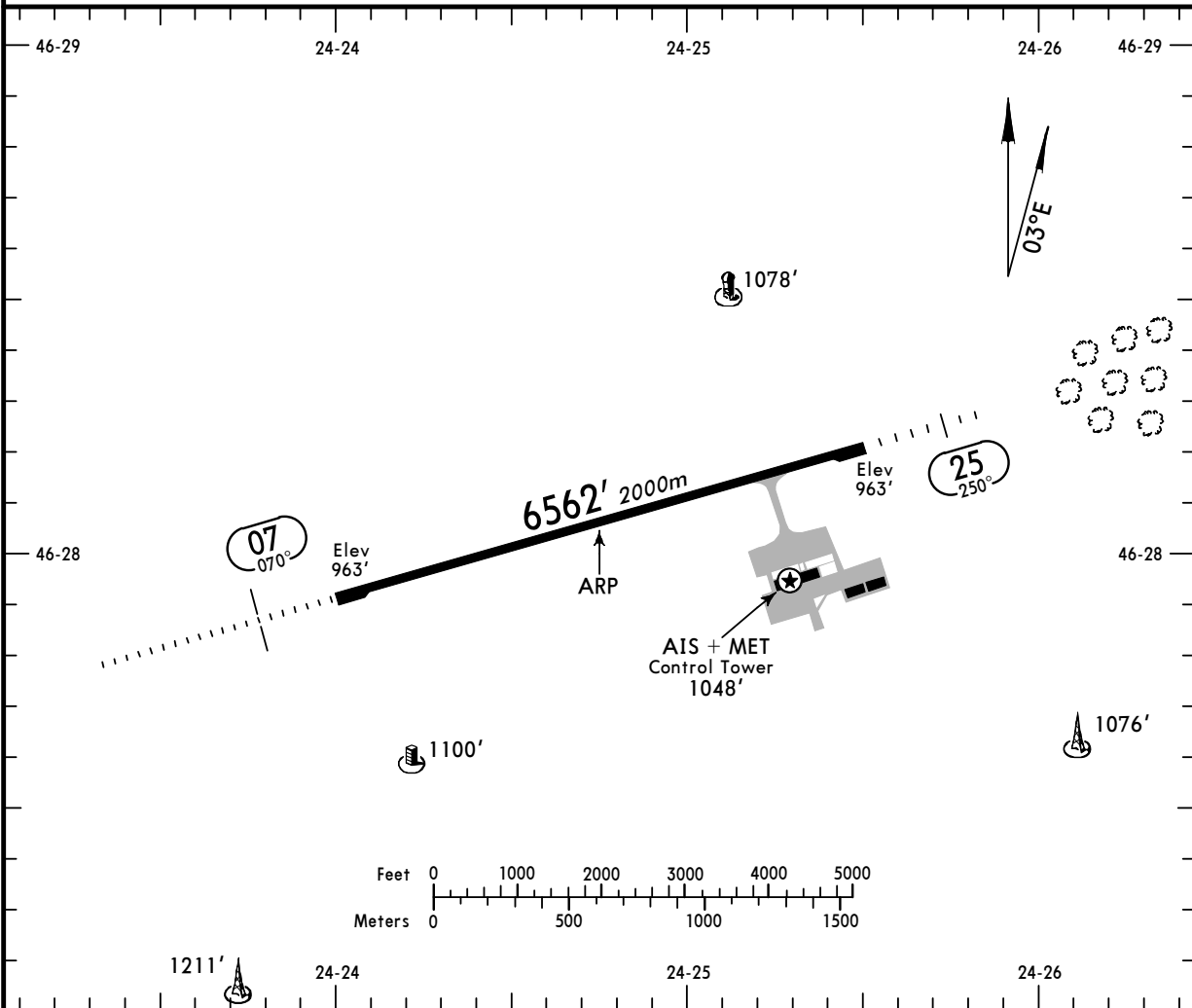


*TARGU MURES Tower

125.9



ADDITIONAL RUNWAY INFORMATION

RWY		USABLE LENGTHS		TAKE-OFF	WIDTH
		Threshold	Landing Beyond		
07	RL (60m) ALS PAPI (angle 3.2°)		5651' 1722m		98'
25	RL (60m) ALS				30m

JAR-OPS

TAKE-OFF **1**

	All Rwy's		
	LVP must be in Force		
	RCLM (DAY only) or RL	RCLM (DAY only) or RL	NIL (DAY only)
A			
B	250m	400m	500m
C			
D	300m		

1 Operators applying U.S. Ops Specs: CL required below 300m.

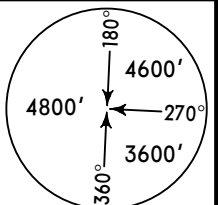
NOT FOR OPERATIONAL USE

*TARGU MURES Tower (TWR/APP)

125.9

BRIEFING STRIP™

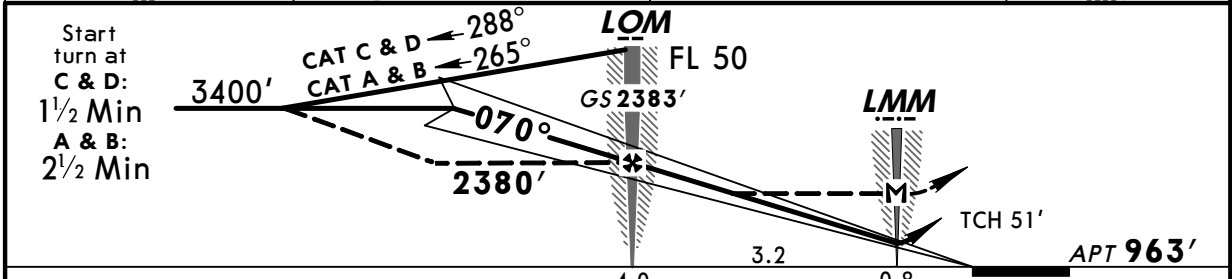
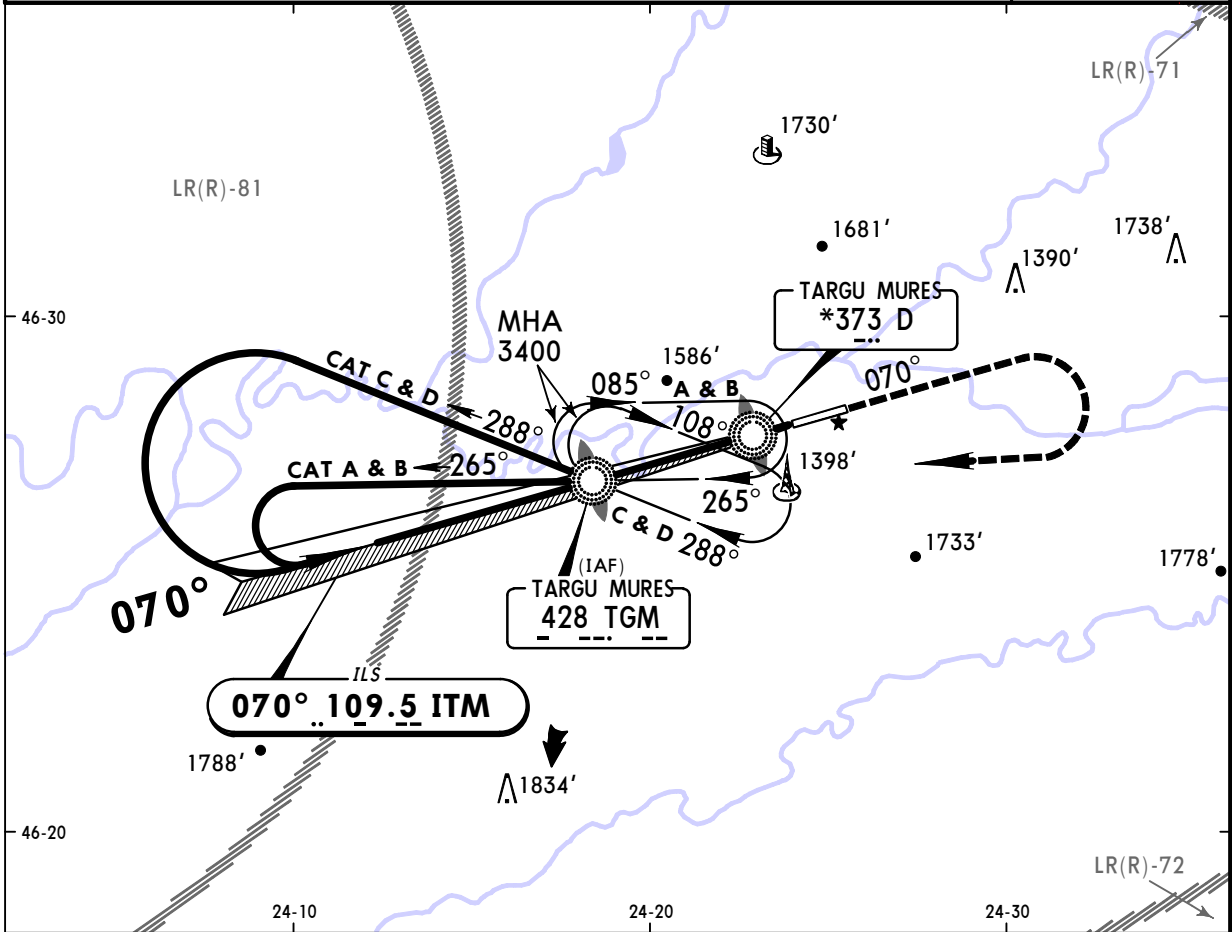
LOC ITM 109.5	Final Apch Crs 070°	GS LOM 2383' (1420')	ILS DA(H) 1163' (200')	Apt Elev 963'
----------------------------	----------------------------------	-----------------------------------	-------------------------------------	----------------------



MISSED APCH: Climb STRAIGHT AHEAD to 3400', then turn RIGHT to TGM NDB.

Alt Set: hPa (MM on req) Apt Elev: 35 hPa Trans level: By ATC Trans alt: 4000'

MSA TGM NDB



Gnd speed-Kts	70	90	100	120	140	160	PAPI ALS 3400'
ILS GS or LOC Desc angle 3.20°	402	517	574	689	804	919	
MAP at LMM							

JAR-OPS STRAIGHT-IN LANDING RWY 07				CIRCLE-TO-LAND		
ILS		LOC (GS out)				
DA(H) 1163' (200')		MDA(H) 1340' (377')				
FULL		ALS out		LMM out	ALS out	Max Kts
A	RVR 800m	RVR 1000m	RVR 1300m	NOT AUTH	RVR 1500m	100
B			RVR 1400m		RVR 1800m	135
C			RVR 1600m		RVR 2000m	180
D			RVR 1800m			205
				MDA(H)		VIS
				1880' (917')		1500m
				1970' (1007')		1600m
				2210' (1247')		2400m
				2230' (1267')		3600m

NOT FOR OPERATIONAL USE

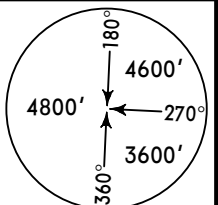
PANS OPS 4

*TARGU MURES Tower (TWR/APP)

125.9

BRIEFING STRIP™

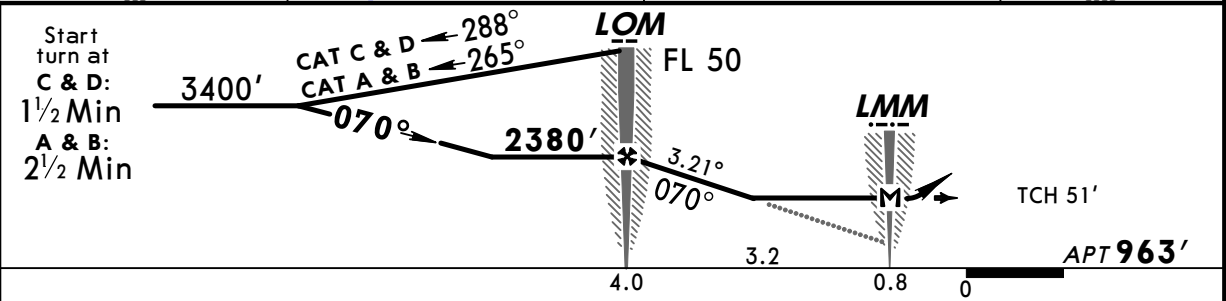
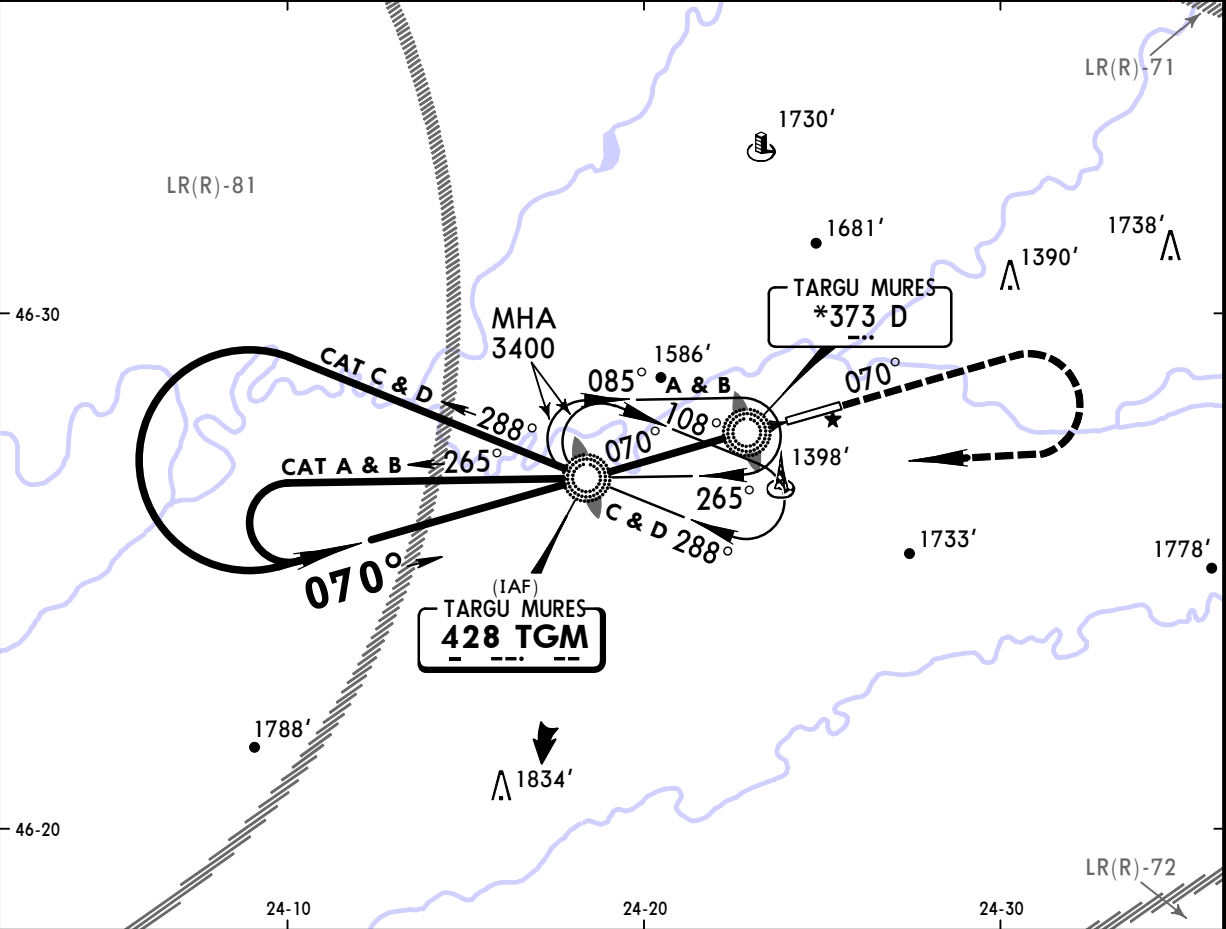
NDB TGM 428	<i>Final Apch Crs</i> 070°	<i>Minimum Alt LOM</i> 2380' (1417')	<i>MDA(H)</i> 1630' (667')	<i>Apt Elev</i> 963'
--------------------	--------------------------------------	--	--------------------------------------	-----------------------------



MISSED APCH: Climb STRAIGHT AHEAD to 3400', then turn RIGHT to TGM NDB.

Alt Set: hPa (MM on req) Apt Elev: 35 hPa Trans level: By ATC Trans alt: 4000'

MSA TGM NDB



<i>Gnd speed-Kts</i>	70	90	100	120	140	160	
<i>Descent angle</i> 3.21°	398	511	568	682	795	909	
<i>LOM to MAP</i> 3.2	2:45	2:08	1:55	1:36	1:22	1:12	
<i>or MAP at LMM</i>							

JAR-OPS		STRAIGHT-IN LANDING RWY 07		CIRCLE-TO-LAND	
		<i>MDA(H)</i> 1630' (667')			
		ALS out		Max Kts	
A	RVR 1500m	100	1880' (917')	<i>MDA(H)</i>	<i>VIS</i>
B	RVR 1500m	135	1970' (1007')		1500m
C	RVR 2000m	180	2210' (1247')		1600m
D	RVR 2000m	205	2230' (1267')		2400m
					3600m

NOT FOR OPERATIONAL USE

PANS OPS 4