

STAR

LARNACA, CYPRUS
LARNACA INTL

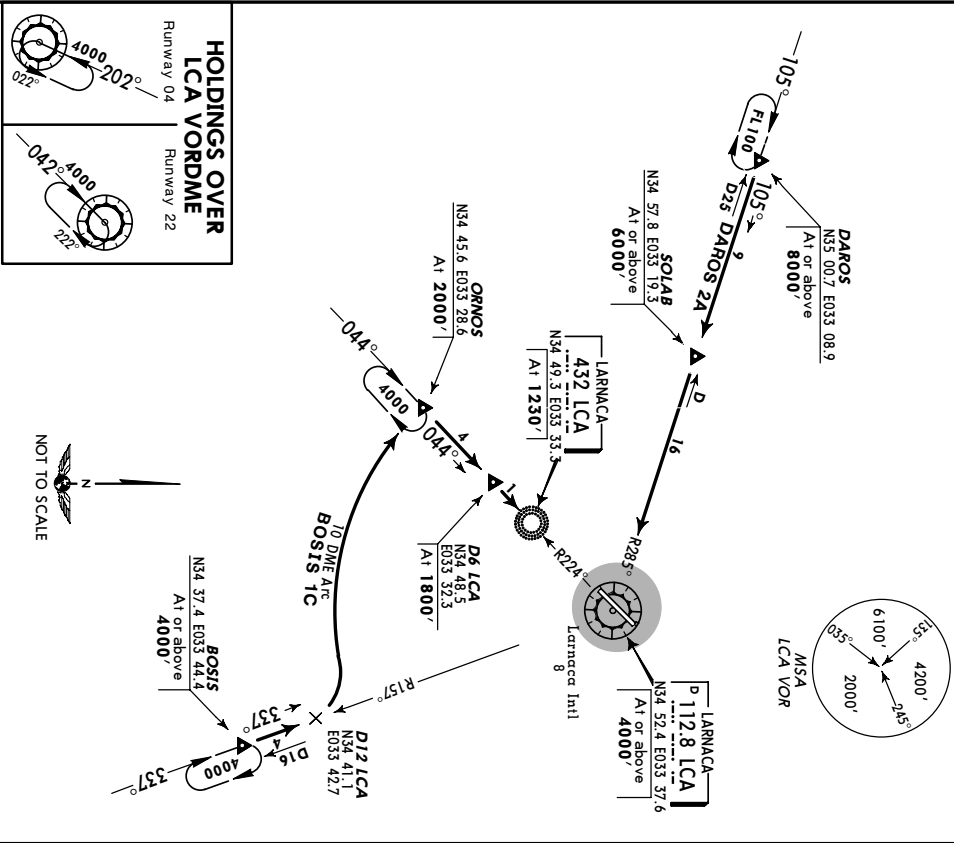
10-2

3 APR 98

*ATIS **112.8**

TRANS LEVEL: BY ATC
TRANS ALT: 8000'

BOSIS ONE CHARLIE (BOSIS 1C)
DAROS TWO ALFA (DAROS 2A)
ARRIVALS
(RWYS 04, 22)



STAR	RWY	ROUTING	ALTITUDE
BOSIS 1C	04	At Bosis Int intercept LCA R-157 inbound to D12 LCA, turn LEFT, proceed along LCA to DME arc to Ornos Int, intercept LCA R-224 inbound to D6 LCA or to LCA NDB.	Cross Bosis Int at or above 4000' , Ornos Int at 2000' , D6 LCA at 1800' or LCA NDB at 1230' .
DAROS 2A	04, 22	At Daros Int intercept LCA R-285 inbound via Solab Int to LCA VORDME.	Cross Daros Int at or above 8000' , Solab Int at or above 6000' , LCA VORDME at or above 4000' .

CHANGES: Chart redrawn. © JEPPESEN SANDERSON, INC., 1991, 1998. ALL RIGHTS RESERVED.

STAR

LARNACA, CYPRUS
LARNACA INTL

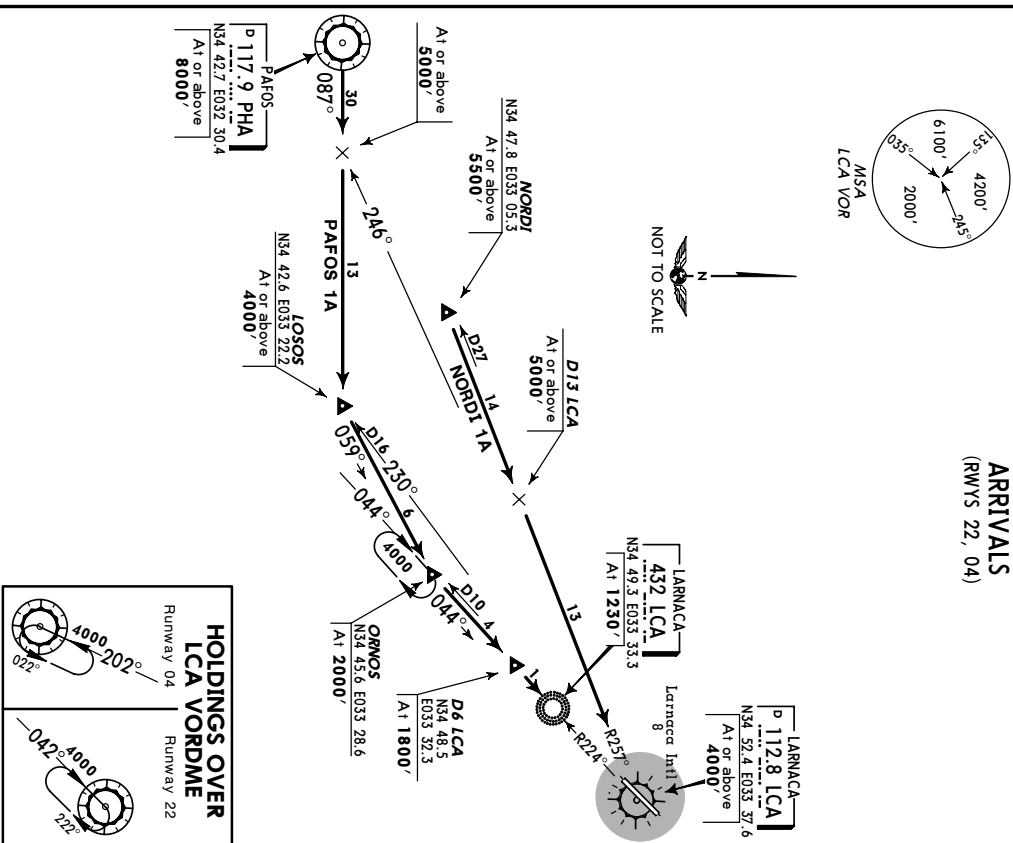
10-2A

3 APR 98

*ATIS **112.8**

TRANS LEVEL: BY ATC
TRANS ALT: 8000'

NORDI ONE ALFA (NORDI 1A)
PAFOS ONE ALFA (PAFOS 1A)
ARRIVALS
(RWYS 22, 04)



STAR	RWY	ROUTING	ALTITUDE
NORDI 1A	22	At Nordi Int intercept LCA R-257 inbound to LCA VORDME.	Cross Nordi Int at or above 5000' , LCA VORDME at or above 4000' .
PAFOS 1A	04	At PHA VORDME turn LEFT, intercept PHA R-087 to Losos Int, turn LEFT, 059° track to Ornos Int, intercept LCA R-224 inbound to D6 LCA or to LCA NDB.	Cross PHA VORDME at or above 8000' , Losos Int at or above 5000' , Ornos Int at 2000' , D6 LCA at 1800' or LCA NDB at 1230' .

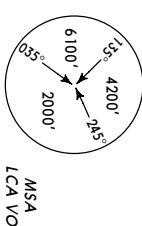
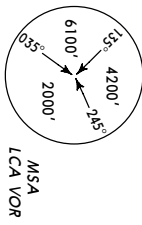
CHANGES: PAFOS VORDME & STAR renamed PAFOS; chart red. © JEPPESEN SANDERSON, INC., 1991, 1998. ALL RIGHTS RESERVED.

STAR
LARNACA, CYPRUS
LARNACA INTL

*ATIS 112.8
 TRANS LEVEL: BY ATC
 TRANS ALTI: 8000

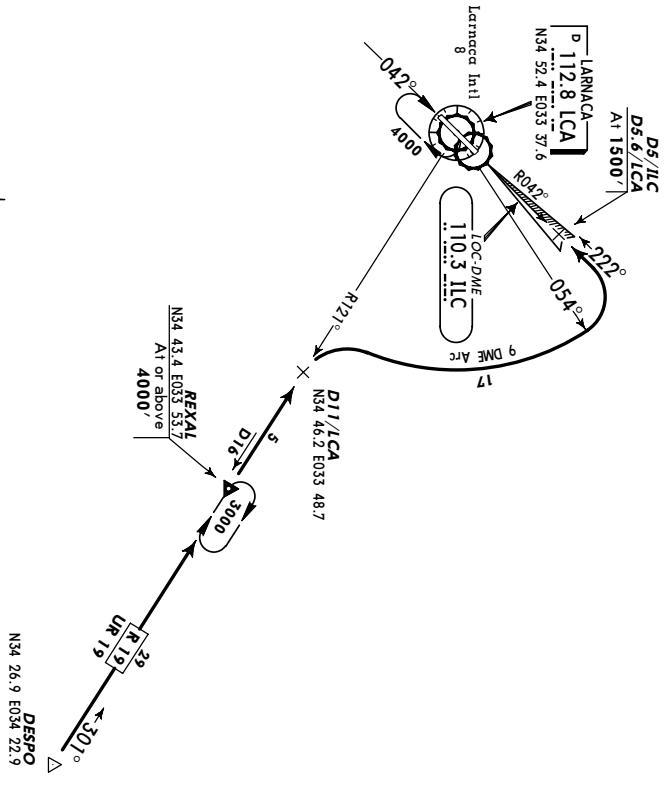
STAR
LARNACA, CYPRUS
LARNACA INTL

*ATIS 112.8
 TRANS LEVEL: BY ATC
 TRANS ALTI: 8000



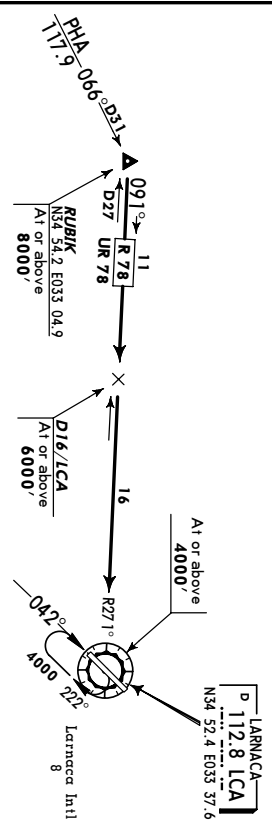
REXAL ONE ALFA (REXAL 1A) ARRIVAL (RWY 22)

Rwy 22: From Rexal Int, cross at or above 4000', proceed to Larnaca R-121/11 DME fix, turn RIGHT, proceed on Larnaca 9 DME arc to intercept ILS-Localizer at 1500', or to intercept Larnaca R-042 inbound.



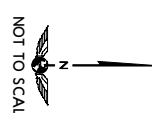
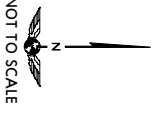
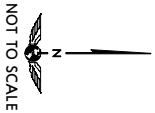
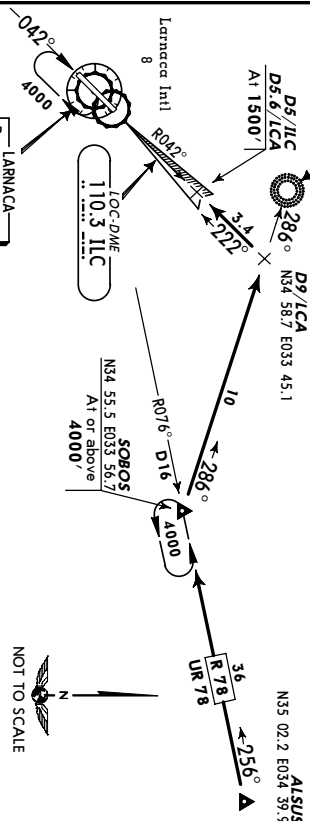
RUBIK ONE (RUBIK 1) ARRIVAL (RWY 22)

Rwy 22: From Rubik Int, cross at or above 8000', proceed via Larnaca R-271/18 DME fix, cross at or above 6000', to Larnaca VOR/DME, cross at or above 4000'.



SOBOS ONE (SOBOS 1) ARRIVAL (RWY 22)

Rwy 22: At Sobos Int, cross at or above 4000', turn RIGHT, 286° bearing towards Dhekelia NDB to intercept ILS-Localizer at 1500', or to intercept Larnaca R-042 inbound.



JEPPesen

3 APR 98

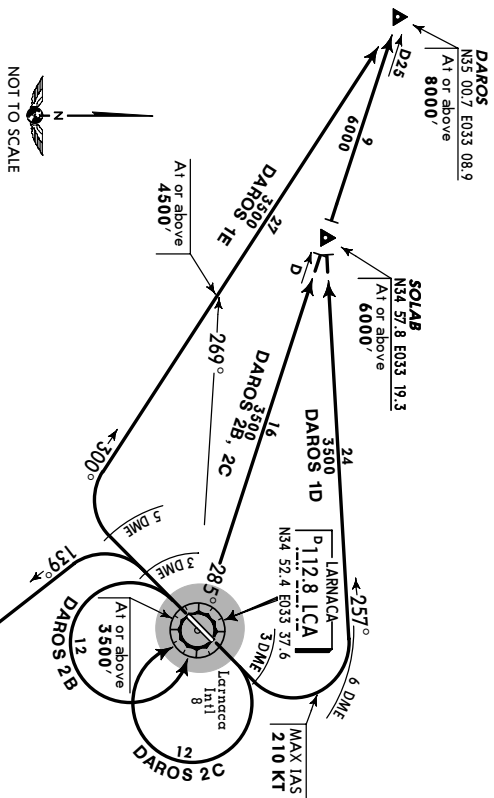
10-3

LARNACA, CYPRUS
LARNACA INTL

SID

TRANS LEVEL: BY ATC
TRANS ALT: 8000'

BOSIS ONE BRAVO (BOSIS 1B)
DAROS TWO BRAVO (DAROS 2B)
DAROS TWO CHARLIE (DAROS 2C)
DAROS ONE DELTA (DAROS 1D)
DAROS ONE ECHO (DAROS 1E)
DEPARTURES
(RWYS 22, 04)



DAROS 1E

This SID requires minimum climb gradients of
365' per nm (6%) until crossing LCA R-269, then
249' per nm (4.1%) to Daros Int.

Gnd speed-Kts	75	100	150	200	250	300
365' per nm	456	608	911	1215	1519	1823
249' per nm	311	415	623	830	1038	1246

SID	RWY	ROUTING	CLIMB INSTRUCTION/ ALTITUDE
BOSIS 1B	22	Straight ahead to LCA 3 DME, turn LEFT, 139° track to Bosis Int.	Cross Bosis Int at or above 3000', climb to assigned altitude.
DAROS 2B		Turn LEFT to LCA VORDME, intercept LCA R-285 via Solab Int to Daros Int.	
DAROS 2C	04	Turn RIGHT to LCA VORDME, intercept LCA R-285 via Solab Int to Daros Int.	
DAROS 1D		Straight ahead to LCA 3 DME, turn LEFT (MAX IAS 210 KT or remain within LCA 6 DME), 257° track to Solab Int, turn RIGHT, intercept LCA R-285 to Daros Int.	Cross Solab Int at or above 6000', Daros Int at or above 8000'.
DAROS 1E	22	Straight ahead to LCA 5 DME, turn RIGHT, 300° track to Daros Int.	Cross LCA R-269 at or above 4500', Daros Int at or above 8000'.

JEPPesen

3 APR 98

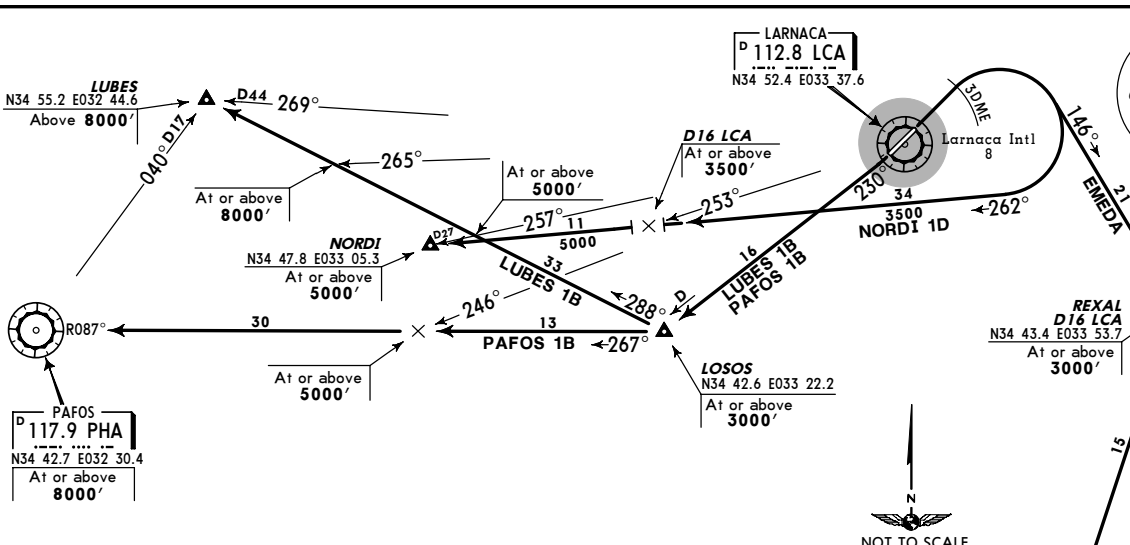
10-3A

LARNACA, CYPRUS
LARNACA INTL

SID

TRANS LEVEL: BY ATC
TRANS ALT: 8000'

EMEDA
LUBES ONE BRAVO (LUBES 1B)
NORDI ONE DELTA (NORDI 1D)
PAFOS ONE BRAVO (PAFOS 1B)
DEPARTURES
(RWYS 04, 22)



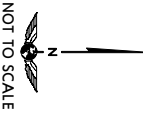
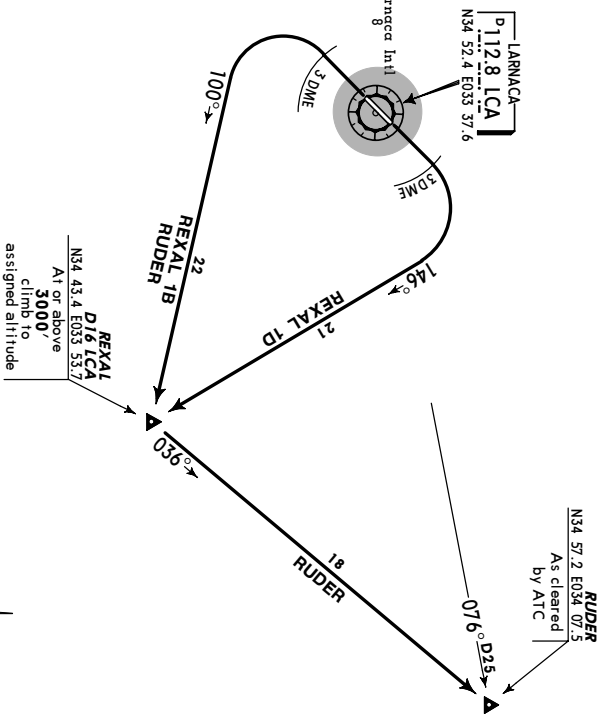
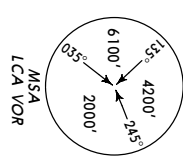
SID	RWY	ROUTING	ALTITUDE
EMEDA	04	Straight ahead to LCA 3 DME, turn RIGHT, 146° track to Rexal Int, turn RIGHT, 196° track to Emeda Int.	Cross Rexal Int at or above 3000', Emeda Int as cleared by ATC.
LUBES 1B	22	Intercept LCA R-230 to Losos Int, turn RIGHT, 288° track to Lubes Int.	Cross Losos Int at or above 3000', LCA R-257 at or above 5000', LCA R-265 at or above 8000', Lubes Int above 8000'.
NORDI 1D	04	Straight ahead to LCA 3 DME, turn RIGHT, 262° track to Nordi Int.	Cross LCA R-253/D16 at or above 3000', Nordi Int at or above 5000'.
PAFOS 1B	22	Intercept LCA R-230 to Losos Int, turn RIGHT, intercept PHA R-087 inbound to PHA VORDME.	Cross Losos Int at or above 3000', LCA R-246 at or above 5000', PHA VORDME at or above 8000'.

JEPPESSEN 3 APR 98 (10-3B) **LARNACA, CYPRUS** **SID**

TRANS LEVEL: BY ATC
TRANS ALT: 8000

REXAL ONE BRAVO (REXAL 1B)
REXAL ONE DELTA (REXAL 1D)

RUDER
DEPARTURES
(RWYS 22, 04)

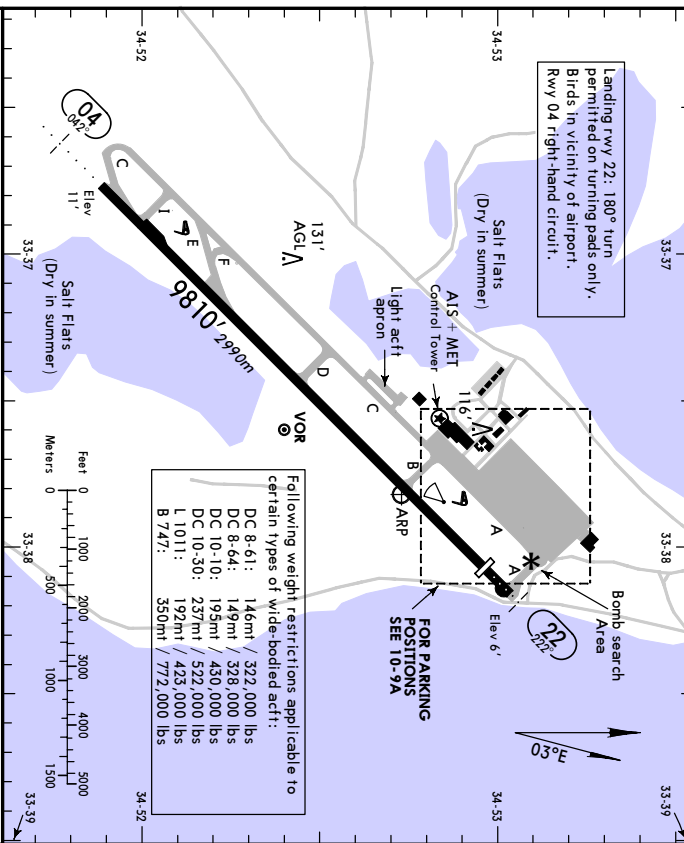


SID	RWY	ROUTING	CLIMB INSTRUCTION/ ALTITUDE
REXAL 1B	22	Straight ahead to LCA 3 DME, turn LEFT, 100° track to REXAL Int.	Cross REXAL Int at or above 3000', climb to assigned altitude.
REXAL 1D	04	Straight ahead to LCA 3 DME, turn RIGHT, 146° track to REXAL Int.	Cross REXAL Int at or above 3000', climb to assigned altitude.
RUDER	22	Straight ahead to LCA 3 DME, turn LEFT, 100° track to REXAL Int, turn LEFT, 100° track to RUDER Int.	Cross REXAL Int at or above 3000', RUDER Int as cleared by ATC.

CHANGES: Chart redesigned & redrawn. © JEPPESSEN SANDERSON, INC., 1998. ALL RIGHTS RESERVED.

LCLK/LCA **JEPPESSEN** 21 FEB 03 (10-9) **LARNACA, CYPRUS**

Ap/ Elev 8' **LARNACA INTL**
LCA 112.8 - On Airport N34 52.7 E033 37.8



RWY	USABLE LENGTHS		TAKE-OFF WIDTH
	Threshold	Glide Slope	
04	HIRL (60m) HIALS PAPI (3.00°)	RVR 9219' 2810m	148' 45m
22	HIRL (60m) HIALS REIL PAPI (2.75°) HST-E	7999' 2450m	1

Additional 197' (60m) are available for take-off if using concrete area in front of Rwy 22.
TORA: 10,007' (3050m).

START-UP PROCEDURE

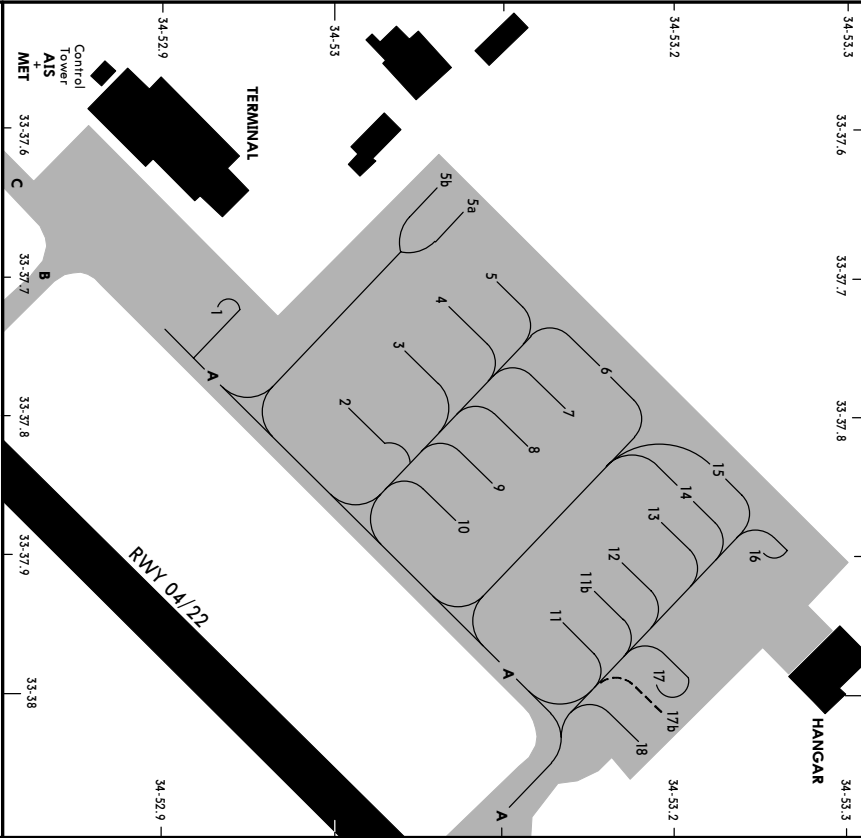
- Unless otherwise instructed via ATIS contact Tower on 121.2 when fully ready for start-up at all times with following phraseology: "Larnaca Tower (callsign of ready), fully ready for start-up."
- Tower will issue start-up and ATC clearance upon the receipt of the call as well as the radar code.

JAR-OPS	TAKE-OFF	
	All Rwy's	LVP must be in Force
A	RCLM (DAY only) or RL	NIL (DAY only)
B	250m	400m
C	300m	500m
D	300m	500m

CHANGES: Communications: Start-up procedure. © JEPPESSEN SANDERSON, INC., 1999, 2003. ALL RIGHTS RESERVED.

JEPPESSEN
 21 FEB 03 (10-9A)

LARNACA, CYPRUS
 LARNACA INTL



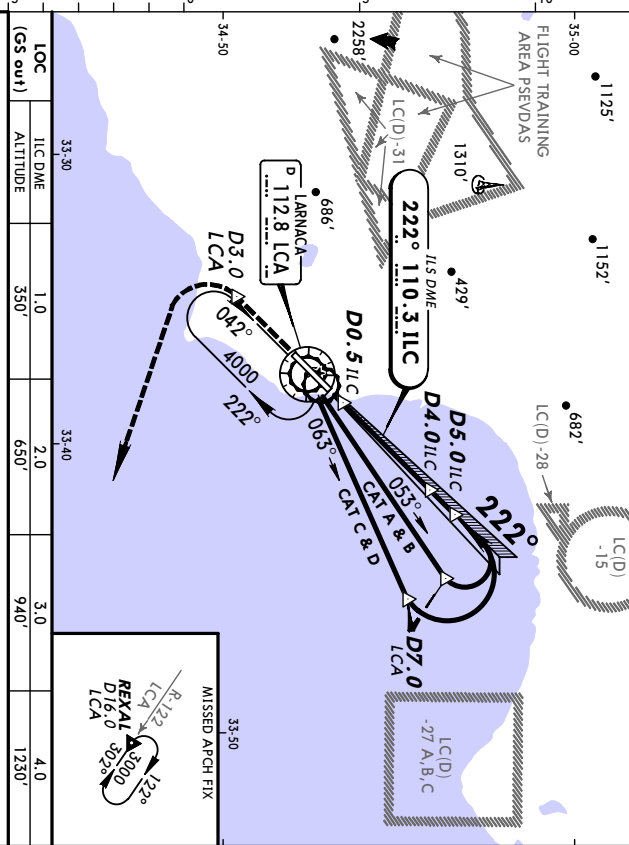
STAND No.	COORDINATES	STAND No.	COORDINATES
1	N34 52.9 E033 37.7	9 thru 11b	N34 53.1 E033 37.9
2	N34 53.0 E033 37.8	12 thru 14	N34 53.2 E033 37.9
3	N34 53.0 E033 37.7	15	N34 53.2 E033 37.8
4, 5, 5a	N34 53.1 E033 37.7	16	N34 53.2 E033 37.9
5b	N34 53.1 E033 37.6	17, 17b, 18	N34 53.2 E033 38.0
6	N34 53.2 E033 37.8		
7, 8	N34 53.1 E033 37.8		

LCLK/LCA
 LARNACA INTL

JEPPESSEN
 21 FEB 03 (11-1)

LARNACA, CYPRUS
 VOR ILS RWY 22

ATIS		LARNACA Approach		LARNACA Tower	
LOC ILC	112.8	Final ILC	121.2	Minimum Alt	119.4
Apch Crs	222°	D4.0 ILC	208' (200')	Apt Elev	8'
ILS	110.3	D4.0 ILC	1230'	Trans alt: 8000'	
<p>MISSD APCH: Climb STRAIGHT AHEAD to D3.0 LCA, then turn LEFT to REXAL climbing to 3000' and contact ATC.</p> <p>Alt Set: hPa Apt Elev: 0 hPa Trans level: By ATC 1. ILS DME reads zero at rwy 22 displaced thresh. 2. MAX IAS 200 KT during base turn.</p>					

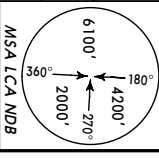


LOC (GS out)	ILC DME	ALTITUDE	LOC (GS out)	ILC DME	ALTITUDE
33.30	1.0	330'	33.40	2.0	650'
	3.0	940'		4.0	1230'

JAR OPS STRAIGHT-IN LANDING RWY 22						CIRCLE-TO-LAND																																									
<p>LOC (GS out) 370' (362')</p> <p>DA(H) 208' (200')</p> <p>MAD(H) 370' (362')</p> <p>MAP at D0.5 ILC</p>						<p>Not authorized Northwest of airport</p>																																									
<p>GRD speed Kts</p> <table border="1"> <tr> <td>70</td> <td>90</td> <td>100</td> <td>120</td> <td>140</td> <td>160</td> </tr> <tr> <td>346</td> <td>445</td> <td>495</td> <td>594</td> <td>693</td> <td>792</td> </tr> </table>						70	90	100	120	140	160	346	445	495	594	693	792	<p>Max Kts</p> <table border="1"> <tr> <td>100</td> <td>130</td> <td>150</td> <td>160</td> <td>1500m</td> <td>1500m</td> </tr> <tr> <td>135</td> <td>140</td> <td>150</td> <td>160</td> <td>1600m</td> <td>1600m</td> </tr> <tr> <td>180</td> <td>160</td> <td>180</td> <td>180</td> <td>1800m</td> <td>2400m</td> </tr> <tr> <td>205</td> <td>180</td> <td>180</td> <td>200</td> <td>2000m</td> <td>3600m</td> </tr> </table>						100	130	150	160	1500m	1500m	135	140	150	160	1600m	1600m	180	160	180	180	1800m	2400m	205	180	180	200	2000m	3600m
70	90	100	120	140	160																																										
346	445	495	594	693	792																																										
100	130	150	160	1500m	1500m																																										
135	140	150	160	1600m	1600m																																										
180	160	180	180	1800m	2400m																																										
205	180	180	200	2000m	3600m																																										
<p>APR 8'</p> <p>0.5' 2.10' 3.5' 1.0'</p>						<p>DA(H) 420' (412')</p> <p>530' (522')</p> <p>770' (762')</p> <p>1090' (1082')</p>																																									

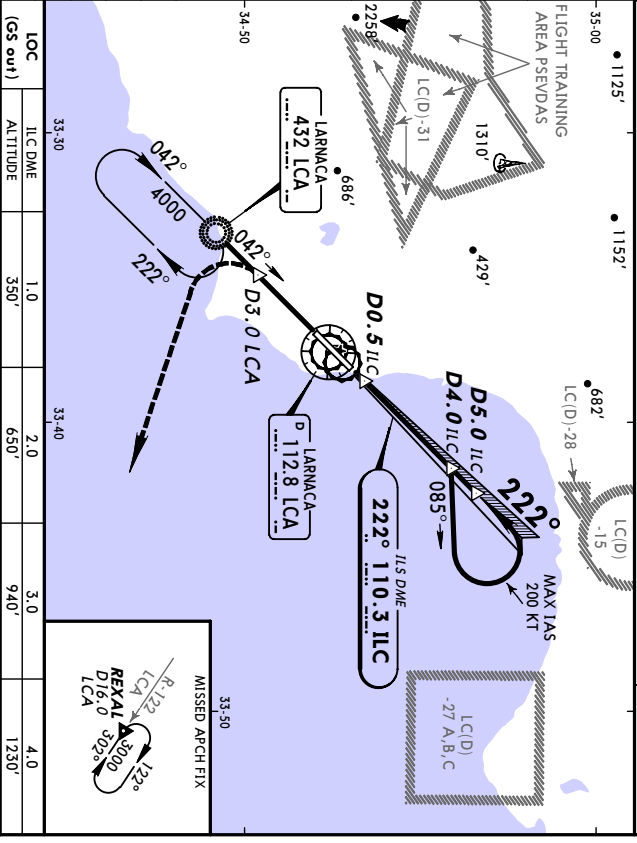
JEPPESEN
 21 FEB 03 (11-2)
LARNACA, CYPRUS
LARNACA INTL NDB ILS DME Rwy 22

LARNACA Tower		LARNACA Tower	
ATIS	112.8	LARNACA Approach	121.2
LOC	110.3	LARNACA Tower	119.4 121.2
Final ILC	222°		
Apch Crs	222°		
Minimum Alt	1230'	ILS	208' (200')
D4.0 ILC	1230'	DA(H)	208' (200')
		Appt Elev	8'

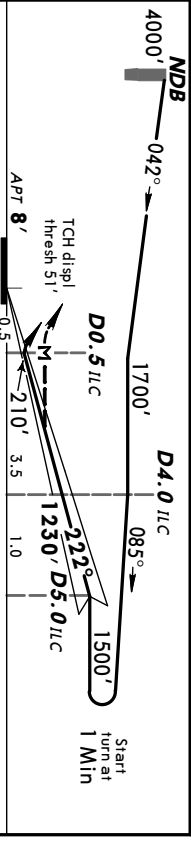


MISSED APCH: Climb STRAIGHT AHEAD to D3.0 LCA, then turn LEFT to REXAL climbing to 3000' and contact ATC.
 ILS DME reads zero at rwy 22 displaced thresh.

Alt Set: hPa Appt Elev: 0 hPa Trans level: By ATC Trans alt: 8000'
 ILS DME reads zero at rwy 22 displaced thresh.



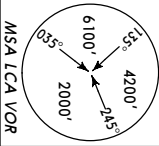
LOC (GS out)	ILC DME	1.0	2.0	3.0	4.0
ALTITUDE		350'	650'	940'	1230'



Gnd speed/Kts		70	90	100	120	140	160
ILS GS 2.75° or LOC Descent Gradient 4.8%		346	445	495	594	693	792
MAP at D0.5 ILC							
JAR OPS STRAIGHT-IN LANDING RWY 22							
ILS DA(H) 208' (200')		LOC (GS out) MDA(H) 370' (362')		CIRCLE-TO-LAND Not authorized Northwest of airport			
FULL ALS out		ALS out		Max Kts			
A	RVR 1300m	RVR 1500m		420' (412')			
B	RVR 1400m	RVR 1500m		530' (522')			
C	RVR 1600m	RVR 1800m		770' (762')			
D	RVR 1800m	RVR 2000m		1090' (1082')			

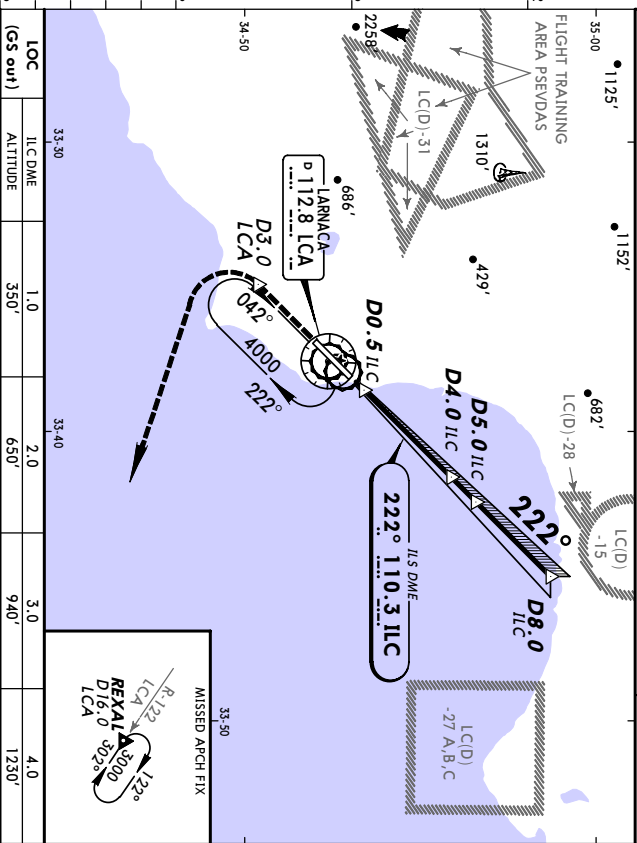
JEPPESEN
 21 FEB 03 (11-3)
LARNACA, CYPRUS
LARNACA INTL ILS Rwy 22

LARNACA Tower		LARNACA Tower	
ATIS	112.8	LARNACA Approach	121.2
LOC	110.3	LARNACA Tower	119.4 121.2
Final ILC	222°		
Apch Crs	222°		
Minimum Alt	1230'	ILS	208' (200')
D4.0 ILC	1230'	DA(H)	208' (200')
		Appt Elev	8'

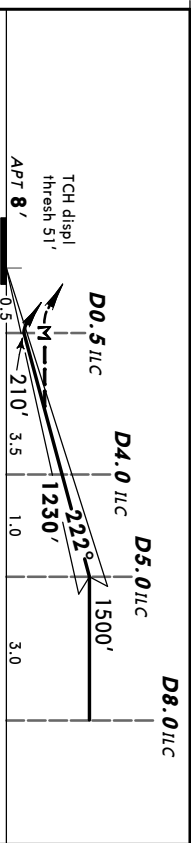


MISSED APCH: Climb STRAIGHT AHEAD to D3.0 LCA, then turn LEFT to REXAL climbing to 3000' and contact ATC.
 ILS DME reads zero at rwy 22 displaced thresh.

Alt Set: hPa Appt Elev: 0 hPa Trans level: By ATC Trans alt: 8000'
 ILS DME reads zero at rwy 22 displaced thresh.



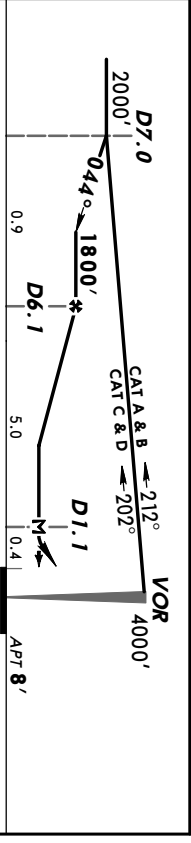
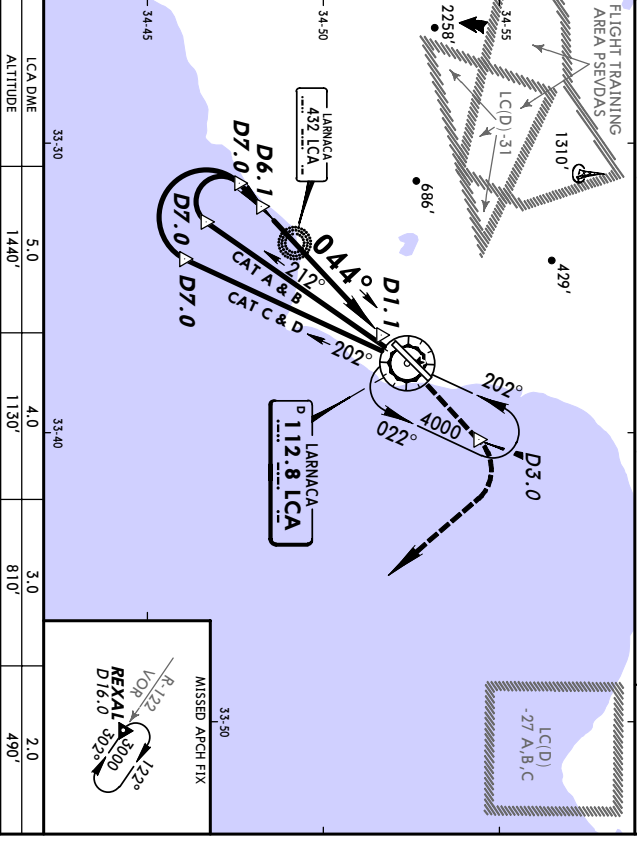
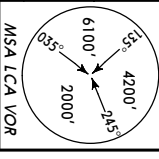
LOC (GS out)	ILC DME	1.0	2.0	3.0	4.0
ALTITUDE		350'	650'	940'	1230'



Gnd speed/Kts		70	90	100	120	140	160
ILS GS 2.75° or LOC Descent Gradient 4.8%		346	445	495	594	693	792
MAP at D0.5 ILC							
JAR OPS STRAIGHT-IN LANDING RWY 22							
ILS DA(H) 208' (200')		LOC (GS out) MDA(H) 370' (362')		CIRCLE-TO-LAND Not authorized Northwest of airport			
FULL ALS out		ALS out		Max Kts			
A	RVR 1300m	RVR 1500m		420' (412')			
B	RVR 1400m	RVR 1500m		530' (522')			
C	RVR 1600m	RVR 1800m		770' (762')			
D	RVR 1800m	RVR 2000m		1090' (1082')			

JEPPISEN
 21 FEB 03 (3-1)
LARNACA, CYPRUS
VOR DME Rwy 04

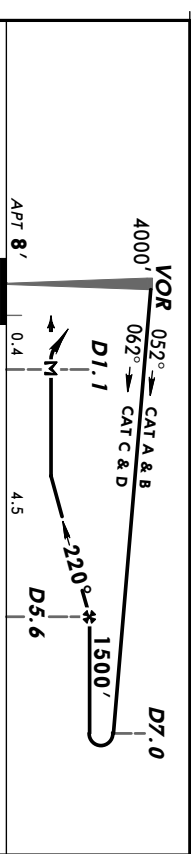
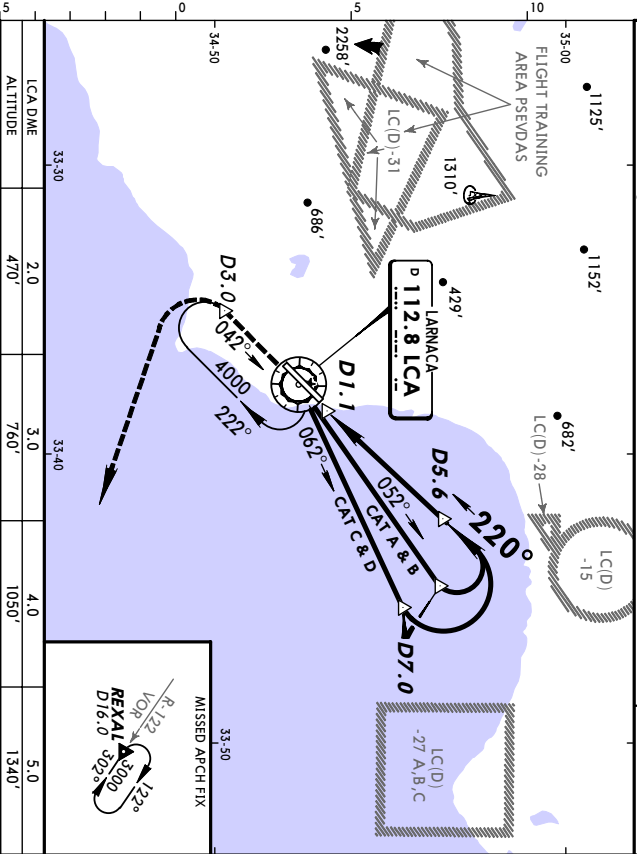
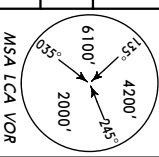
LCLK/LCA LARNACA INTL		LARNACA Approach		LARNACA Tower	
112.8		121.2		119.4 121.2	
VOR	Final LCA	Minimum Alt D6.1	MDA(H)	Apt Elev	
112.8	044°	1800'	370' (362')	8'	
MISSED APCH: Climb STRAIGHT AHEAD to D3.0, then turn RIGHT to REXAL climbing to 3000' and contact ATC.					
Alt Set: hPa			Apt Elev: 0 hPa		Trans level: By ATC
FLIGHT TRAINING AREA PSEVDAS			MSA LCA VOR		



Gnd speed-Kts	70	90	100	120	140	160	HIAS	
	362	465	516	620	723	826		D3.0
Descent Gradient	5.1%							
MAP at D1.1								
JAR OPS								
STRAIGHT-IN LANDING Rwy 04				CIRCLE-TO-LAND				
MDA(H) 370' (362')				Not authorized Northwest of airport				
ALS out				Max Kts				
A	RVR 1200m	ALS out		MDA(H) 420' (412')		VIS 1500m		
B	RVR 1300m			530' (522')		1600m		
C	RVR 1400m			770' (762')		2400m		
D	RVR 1600m			1090' (1082')		3600m		

JEPPISEN
 21 FEB 03 (3-2)
LARNACA, CYPRUS
VOR DME Rwy 22

LCLK/LCA LARNACA INTL		LARNACA Approach		LARNACA Tower	
112.8		121.2		119.4 121.2	
VOR	Final LCA	Minimum Alt D5.6	MDA(H)	Apt Elev	
112.8	220°	1500'	370' (362')	8'	
MISSED APCH: Climb STRAIGHT AHEAD to D3.0, then turn LEFT to REXAL climbing to 3000' and contact ATC.					
Alt Set: hPa			Apt Elev: 0 hPa		Trans level: By ATC
FLIGHT TRAINING AREA PSEVDAS			MSA LCA VOR		



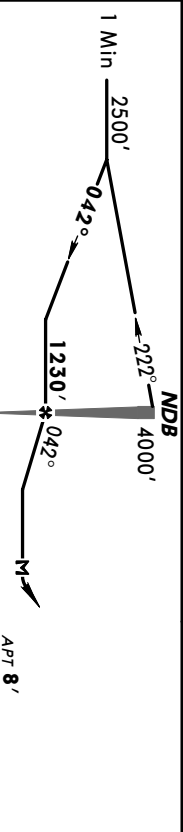
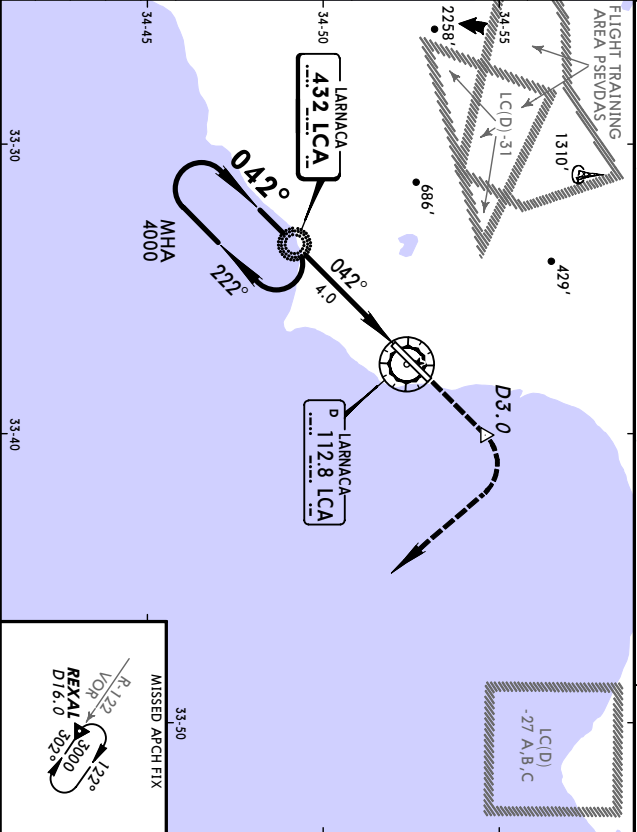
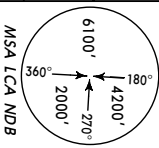
Gnd speed-Kts	70	90	100	120	140	160	HIAS	
	340	437	486	583	681	778		D3.0
Descent Gradient	4.8%							
MAP at D1.1								
JAR OPS								
STRAIGHT-IN LANDING Rwy 22				CIRCLE-TO-LAND				
MDA(H) 370' (362')				Not authorized Northwest of airport				
ALS out				Max Kts				
A	RVR 1300m	ALS out		MDA(H) 420' (412')		VIS 1500m		
B	RVR 1400m			530' (522')		1600m		
C	RVR 1600m			770' (762')		2400m		
D	RVR 1800m			1090' (1082')		3600m		

LCLK/LCA **JEPPESEN** **LARNACA, CYPRUS**
LARNACA INTL 21 FEB 03 (6-1) **NDB Rwy 04**

ATIS		LARNACA Approach		LARNACA Tower	
NDB	112.8	NDB	121.2	NDB	119.4
LCA	Final Apch Crs 042°	Minimum Alt NDB 1230'	MDA(H) NDB 370' (362')	Appt Elev	8'

MISSED APCH: Climb STRAIGHT AHEAD to D3.0, then turn RIGHT to REXAL climbing to 3000' and contact ATC.

Alt Set: hPa Appt Elev: 0 hPa Trans level: By ATC Trans alt: 8000'



Grid speed-Kts	70	90	100	120	140	160	HIAS	D3.0
Descent Gradient 4.8%	340	437	486	583	681	778	PAPI: PAPI	
NDB to MAP	4.0	3:26	2:40	2:24	2:00	1:43		

JAR OPS STRAIGHT-IN LANDING RWY 04

MDA(H) 370' (362')		ALS out		Max HIAS	
A	RVR 1200m			420' (412')	1500m
B	RVR 1300m			530' (522')	1600m
C	RVR 1400m			770' (762')	2400m
D	RVR 1600m			1090' (1082')	3600m